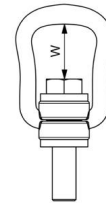
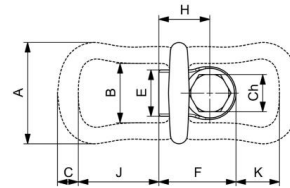
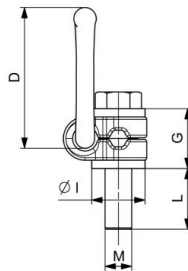


## XOPSTR



**Descripción** Cáncamo giratorio.

- Características**
- Giro de 360°, ajustable a la dirección de tiro.
  - Anilla de carga basculante.
  - Capacidad de carga máxima en cualquier dirección.

**Conforme a** • Norma EN1677-4.

Referencia	Rosca [M]	CMU [t]	Peso [kg]	A [mm]	B [mm]	C [mm]	D [mm]	E [mm]	F [mm]	G [mm]	H [mm]	I [Ø mm]	L [mm]	W [mm]	J [mm]	K [mm]	Ch [mm]
XOPSTR-08	M08	0.5	0.27	57	34	10	78	24	41	30	26.5	25	15	43	51	35	13
XOPSTR-10	M10	0.9	0.29	57	34	10	78	24	41	30	26.5	25	15	42	51	35	17
XOPSTR-12	M12	1.35	0.5	66	38	13.5	85	30	50	36	33	32	23	40	52	28	19
XOPSTR-16	M16	2	0.51	66	38	13.5	85	30	50	36	33	32	24	38	52	28	24
XOPSTR-20	M20	3.5	1.25	87	55	16	111	48	68	44	42.5	45	31	54	71	36	30
XOPSTR-24	M24	4.5	1.3	87	55	16	111	48	68	44	42.5	45	37	51	71	36	36
XOPSTR-27	M27	4	3.15	109	66	22.5	145	54	91	63	58.5	60	37	64	86	47	46
XOPSTR-30	M30	6.7	3.25	109	66	22.5	145	54	91	65	58.5	60	45	62	86	47	46
XOPSTR-36	M36	8	5.9	136	78	28	190	62	108	81	72.5	70	59	88	115	74	55
XOPSTR-42	M42	15	11.2	169	97	36	242	68	131	89	87.5	85	63	121	151	97	65
XOPSTR-48	M48	20	11.6	169	97	36	242	68	131	89	87.5	95	71	117	151	93	75

EN1677-4

**SpanSet S.A**

Tel. 943 692 600

Fax. 943 692 575

Email sse@spanset.es

www.spanset.es