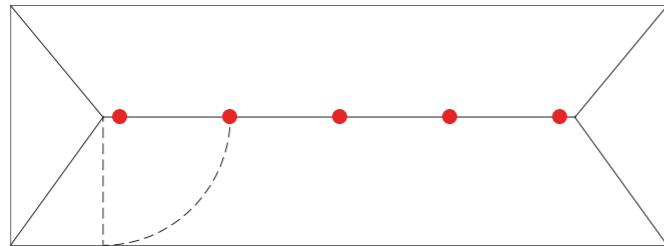


Head Office

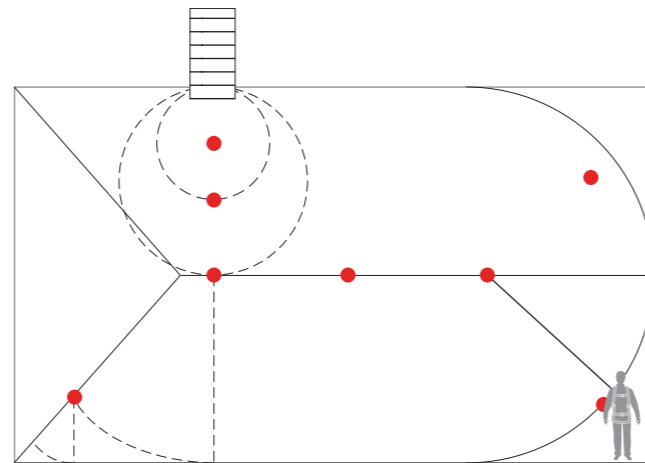
SpanSet Australia Ltd
150 Old Bathurst Road
(PO Box 164)
Emu Plains NSW 2750

Phone: 02 4735 3955
Fax: 02 4735 3630

sales@spanset.com.au
www.spanset.com.au



The pendulum effect applies to all roof surfaces.



Positioning Layout – Guide Only

All safety procedures must be complied with when installing FastLink anchor points. For more information refer to WorkCover in regard to current safety Codes of Practice for working at height. This anchor is suited for one person only.

Attach only to structure able to support the anchor point.

In Case of Accident

- A fall rescue plan should be developed prior to using this equipment
- Persons working at heights should not work alone.

It is critical that before using any anchorage system a fall rescue plan is in place for any persons suspended mid-air following a fall. Serious injury or death can occur in a matter of minutes, particularly if a person's movement or breathing is restricted or loss of consciousness

has occurred. In accordance with your fall rescue plan and appropriate first aid procedures it is essential to remove the person from the suspended position as quickly as possible.

In accordance with AS/NZS 1891.4:2009 clause 9.5 Equipment Which Has Arrested a Fall or Shows a Defect. Any piece of equipment including both personal and permanently installed items, which has been used to arrest a fall or which shows any defect during operator or periodic inspection shall be withdrawn from service immediately and a replacement obtained if necessary.

A label indicating the condition or defect should be attached to the equipment, and it should be examined by a competent person who will decide whether the equipment is to be destroyed or repaired if necessary and returned to service. In the latter case, details of any repair shall be documented and a copy given to the operator.



Roof anchor for metal roofs



Roof anchor for tiled roofs

Read entire instructions before installing this product and install in accordance with these instructions. Failure to follow all warnings and instructions may result in a serious injury or death.

The building or structure for the anchorages should be assessed by an engineer, unless it is clear to a competent person that the anchorages system is structurally adequate. Installation must be carried out by or under the supervision of a competent person.

- Do not over-tension screws as this will result in eyelet damage, cracking or burring
- Maximum user per FastLink 1 person
- Inspect before each use (see Maintenance)

- Use enclosed log for six monthly inspections
- Inspect the Remove From Service date on the product. Shelf life does not exceed 10 years
- All safety procedures must be complied with in accordance with the current legislation and regulations. Ensure safety at all times by being attached to anchor point approved safety equipment, using a scaffold or secured ladder
- The FastLink is designed as a temporary anchor only and should not be left unattended or exposed to the elements for prolonged periods of time. Do not leave the FastLink installed overnight
- It is recommended that the FastLink be uninstalled when not in use and stored in its bag in a safe, clean and dry environment free from chemicals and UV light
- If any doubt exists as to the strength of the structure or roof sheets an engineer should make the assessment
- During installation you must be safe at all times
- Installation must be carried out by, or under the supervision of a competent person
- FastLink anchors must not be used as end anchors in any system
- All equipment must be inspected in accordance with AS/NZS 1891.4:2009 and the manufacturer's instructions
- The FastLink is not designed for abseiling and should only be used in a 0-30 degrees roof pitch range (live loading may trigger the energy absorbing capabilities). This roof anchor has been tested in a free fall situation, so should a person fall from a roof pitch above 30 degrees the anchor will easily arrest a fall
- Users of fall arrest equipment and all people undertaking tasks with harness-based work at heights shall be trained and assessed in accordance with the requirements set out in AS/NZS 1891.4:2009:2.2.11 Training and competency.

Maintenance – Periodic and Before Each Use

All items of equipment which are in regular use shall be subjected to periodic inspection and servicing. These regular scheduled inspections and servicing must be carried out by a competent person.

Procedures to be carried out before each use:

- Feel and visually inspect anchors in the following ways for deterioration.
- Inspect the cable for:
 - Cuts, distortion, excessive stretching
 - Damage due to contact with chemicals, heat, corrosives or solvents
 - Deterioration due to moisture, mildew or ultraviolet exposure
 - Abrasions and excessive wear, especially where contact with hardware has occurred
 - Discolouration from exposure to chemicals or prolonged exposure to UV light
 - Rigidity resulting from overloading or the product sustaining a fall.
- Inspect the tabs for:
 - Distortion as a result of a fall
 - Missing tab, excessive wear, burring of the tabs
 - Distortion around the tab which could indicate the TempLink has sustained a fall
 - Free from dirt and other obstructions.
- Inspect the cable and tabs joining position for signs of wear
- Inspect the Remove From Service date on the product. The shelf life of this product does not exceed 10 years
- The FastLink anchor point has one energy absorbing stainless steel component. If this energy absorbing region is expanded/distorted this will indicate the anchor point has arrested a fall and should be removed from service.

- Inspect the components of the anchor for corrosion, superficial surface marking is permitted, while deeper corrosion or pitting will require attention
- Consult FastLink user(s) for any additional situations that may have caused damage
- If the product has sustained any of the above issues or any doubt exists remove the FastLink from service.

Cleaning Instructions

If you do need to clean the FastLink use only warm water and no soap/detergent products. Thoroughly dry before storage.

Care and Maintenance

Ensure the FastLink is stored in the following manner, away from direct UV/sunlight, in a dry environment, away from exposure from chemicals, heat, corrosives or solvents.

Regular inspection and care of your equipment is of the utmost importance. SafetyLink recommends the FastLink should be removed from service and destroyed after 5 years from the date of first use. The product has a shelf life of 10 years from the date of manufacture.

Installation Instructions

The first FastLink must be positioned in a location safely reached by a secured ladder or a manhole access point. Access to inside the roof space is not required for installation purposes. The building structure must be inspected for integrity and compliance in relation to relevant building codes. The building construction must meet all

requirements in regard to correct fitting and use of materials set by manufacturers.

Inspections must be undertaken of timber and metal structural components for signs of structural damage such as splits, water damage, pest erosion and fixing issues. Roof spaces to be accessed must not be over 30 degrees in pitch.

Metal Roof Sheeting with Metal Battens or Timber Battens

It is recommended the FastLink be installed to the crest of the roof sheeting profile, where this is not practical the FastLink may be installed into the pan away from debris. Metal roof sheet size must be a minimum of 0.42mm.

FastLink Inspection Record – Every Six Months

ID number		Date of manufacture		Remove from service date	
User name		Date of purchase			
Company name			Phone no.		
Date of inspection	Defects found at time of inspection	Action taken	Inspector Signature	Next Inspection Due	

Metal Roof Sheeting with Metal Battens or Timber Battens



Remove six (6) of the existing roof screws along the batten line at the appropriate location for the temporary anchor.

Place the cable section out along the roof sheeting, adjust the tabs to fit the roof profile and to line up with the existing roofing screw holes.

Replace the six existing roofing screws with six (6) screws size 14g - 10 (TPI) x 65 hex head screws. Screw through each tab and existing hole, securing to the batten under the roof sheeting.

Ensure the screws are the correct length to engage the batten to eliminate over passing the thread into the blank part of the screw. Screws must penetrate timber batten by at least 35mm.

Tile Roof with Timber Rafters



Timber Batten/Tile Roof

Remove existing roof tiles at the appropriate location for the temporary anchor.

Place the cable section down the rafter and drill a 4.5mm pilot hole, (never attach to battens on tile roofs, always only attach to suitable rafters).

Screw tabs to the rafter through the tab holes no less than 100mm apart using six (6) x size 14g -10 (TPI) x 65 hex head screws. Do not over tension screws as this will result in thread stripping, tab/structural damage.

Screws must penetrate the timber batten by at least 35mm.

The FastLink anchor point is now ready for use, giving you an anchor point to attach to while installing the next FastLink.

Removal of FastLink

During removal you must be safe at all times

On tiled roofs replace the tiles and ensure a water tight seal is achieved.

On metal roofs replace the six (6) x size 14g - 10(TPI) x 65 hex head screws to secure roof sheet and ensure a water tight seal is achieved.