



SpanSet®

01

Height Safety  
Lifting  
Load Control  
Safety Management

SpanSet  
GROUP

50  
YEARS

SpanSet  
Certified  
Safety

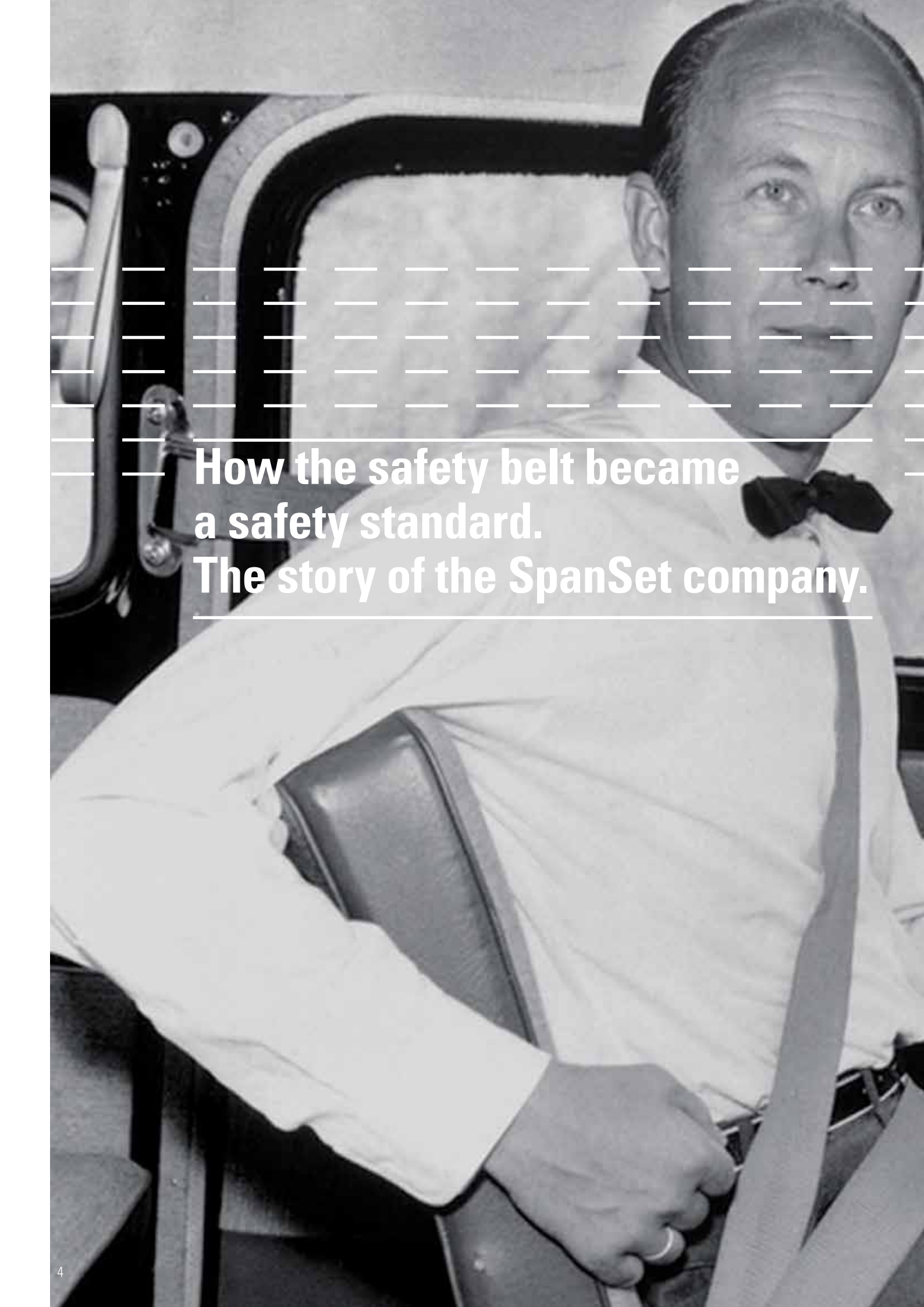




**SpanSet is here for you:**

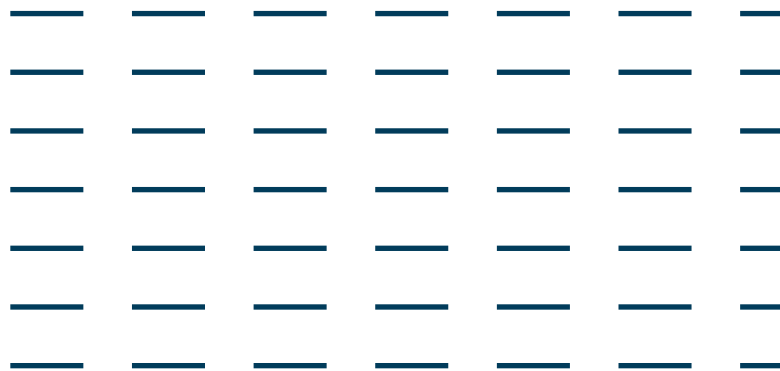
Switzerland, Australia, Austria, Brazil, China,  
France, Germany, Hungary, UK, Indonesia, Italy,  
Poland, Spain, Taiwan, USA





**How the safety belt became  
a safety standard.  
The story of the SpanSet company.**





**Fifty years ago the world was very different, cars had no seat belts. But the hour had come for a small Swedish ribbon weaving company.**

Today it is hard to imagine that a few decades ago, most cars were shipped without seat belts. In other respects too, little attention was paid to accident prevention at that time, and so many collisions from which today one would emerge unscathed, had fatal consequences.

In order to counter this, the Swedish car company Volvo approached the ribbon weaving companies AB Textilkonst and Klippan at the end of the 1950s, with instructions to develop a safety belt for its vehicles.

Volvo was already building very sturdy cars that withstood the harsh Swedish winters and other tests, but it wanted to continue to improve the safety of the occupants.

Together with Volvo engineers, Klippan developed the first car safety belt in the world, made of high-strength fabric ribbon. It was installed in models Amazon and 544 for the 1st time in 1959 and caused a lot of astonishment in the public, but also ensured an enduring image of Swedish inventions as both pioneering and durable.

**How we replaced ropes and chains**

The car safety belt was a great success, and soon other manufacturers had also installed it. Thanks to the great demand, Erik Ehnimb, co-owner of Klippan, was able to found the SpanSet company in Malmö in 1966.

The ribbons produced by SpanSet were quickly and enthusiastically employed in many other areas, where up to that point chains and wire ropes had been used, as in the case of the transport of paper. The customers appreciated the enormous load-bearing capacity of the new lashing and lifting belts.

In 1967, Mr. Ehnimb founded SpanSet AG in Hombrechtikon in the Zurich highlands and additional companies in Germany, Italy, France and England. Later, companies in Asia, America and Australia were added, thus forming a global distribution network.





— — — — —  
— — — — —  
— — — — —  
— — — — —  
— — — — —  
— — — — —  
— — — — —  
— — — — —  
— — — — —  
— — — — —

**SpanSet – a way to success  
that always results from being  
one step ahead!**

We are quite proud of our achievements. After all, they have contributed to safer and easier working conditions around the world – and thus to fewer accidents and lower operating costs.

Meeting standards is good. Setting standards is better.

The SpanSet brand stands for something. Not only for meeting international safety standards, but for raising them again and again.

This is exactly what we stand for with our products, services and consultancy: for more security than is demanded today – namely, as much as is possible tomorrow.

That is our goal, that is our job and that is our passion.

So those working with SpanSet can also fully entrust their safety to our products in the future.

**SpanSet  
Certified  
Safety**







A photograph of two men in industrial workwear. The man on the left is wearing a white hard hat with the 'SpanSet' logo, a dark blue jacket, and a yellow safety vest. He is looking down at a clipboard held by the man on the right. The man on the right is wearing a white hard hat, safety glasses, and a light blue jacket. They are standing outdoors on a paved surface with green plants in the background. The text 'How SpanSet provide customers with working solutions from technical advice through to product supply and training' is overlaid in white on the image.

**How SpanSet provide customers with working solutions from technical advice through to product supply and training**

For further information  
[www.spanset.com.au](http://www.spanset.com.au)

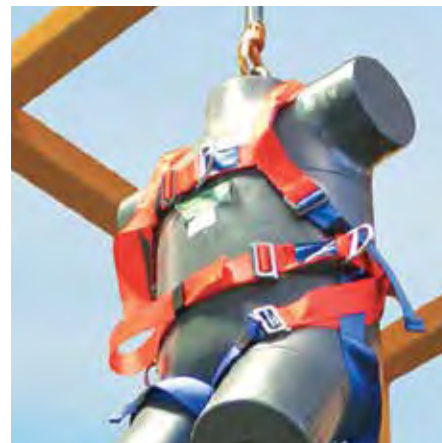
---

## EQUIPMENT SUPPLY, TRAINING AND AFTER SALES

---

Manufacturing and Testing

---



---

## SpanSet Commitment

SpanSet is committed to the design and manufacture of products to meet our customers' needs. We attribute the success of our products to our good listening skills and our policy of continual research and development, covering all applications from basic Fall Arrest and Work Positioning to technical Rope Access and the Gotcha™ Rescue Range.

By communicating with our customers from the procurement stage through to the training and implementation stages, SpanSet is able to ensure the right products and services are in place to satisfy our customers' demands.

SpanSet's aim is to develop on-going partnerships with its customers to support existing products and to provide solutions to new challenges.

All SpanSet products have been developed to work as part of an overall safety solution, which includes products, training and implementation. By offering our customers an overall solution SpanSet is better able to meet the customers' needs and help them develop safer solutions for work at height.

This can be seen in our work at height products and training packages, which are designed to give tradesmen and plant operators a practical solution to their personal fall protection needs and enable them to comply with all the requirements of work at height regulations.



**EQUIPMENT SUPPLY,  
TRAINING AND AFTER SALES**

Manufacturing and Testing



**SpanSet Accreditation**

The ISO System for the Registration of Companies of Assessed Capability – ISO 9001: 2008 – is intended to act as a completely independent and regulated audit of a company’s ability to operate an efficient and effective Quality System.

This benefits the customer through the absolute assurance of product quality. It can also cut our customers’ needs for supplier assessments and received goods inspection costs as well as improving business relationships with our customers. Our scope for registration includes the design, development and manufacture of fall arrest systems.

In addition to our commitment to ISO9001: 2008, SpanSet is also a certified Registered Training Organisation under the Australian Quality Training Framework and as such are able

to offer nationally accredited training courses. Additional accreditations include licensing to manufacture AS/NZS 1891.1 certified height safety product, ISO 14001:2004 Certified Environment Management System, OHSAS 18001:2007 Certified Occupational Health and Safety Management Systems, Australian/ New Zealand Standard 4801:2001 Certified Occupational Health and Safety Management Systems, 5 Tick Certified Product and AS1353 and AS4497 Certified Synthetic Flat and Round Slings respectively.

All of our dynamic and static testing facilities are accredited by NATA to ISO/IEC 17025.



**ACCREDITED  
LABORATORY  
Reg. No. 5820**



**NATIONALLY RECOGNISED  
TRAINING**



**Australian  
Standard**



Environment  
ISO 14001:2004  
Lic:  
CEM21958



Health & Safety  
AS 4801:2001  
Lic:  
OHS21464



Health & Safety  
OHSAS 18001:2007  
Lic:  
OHS21464



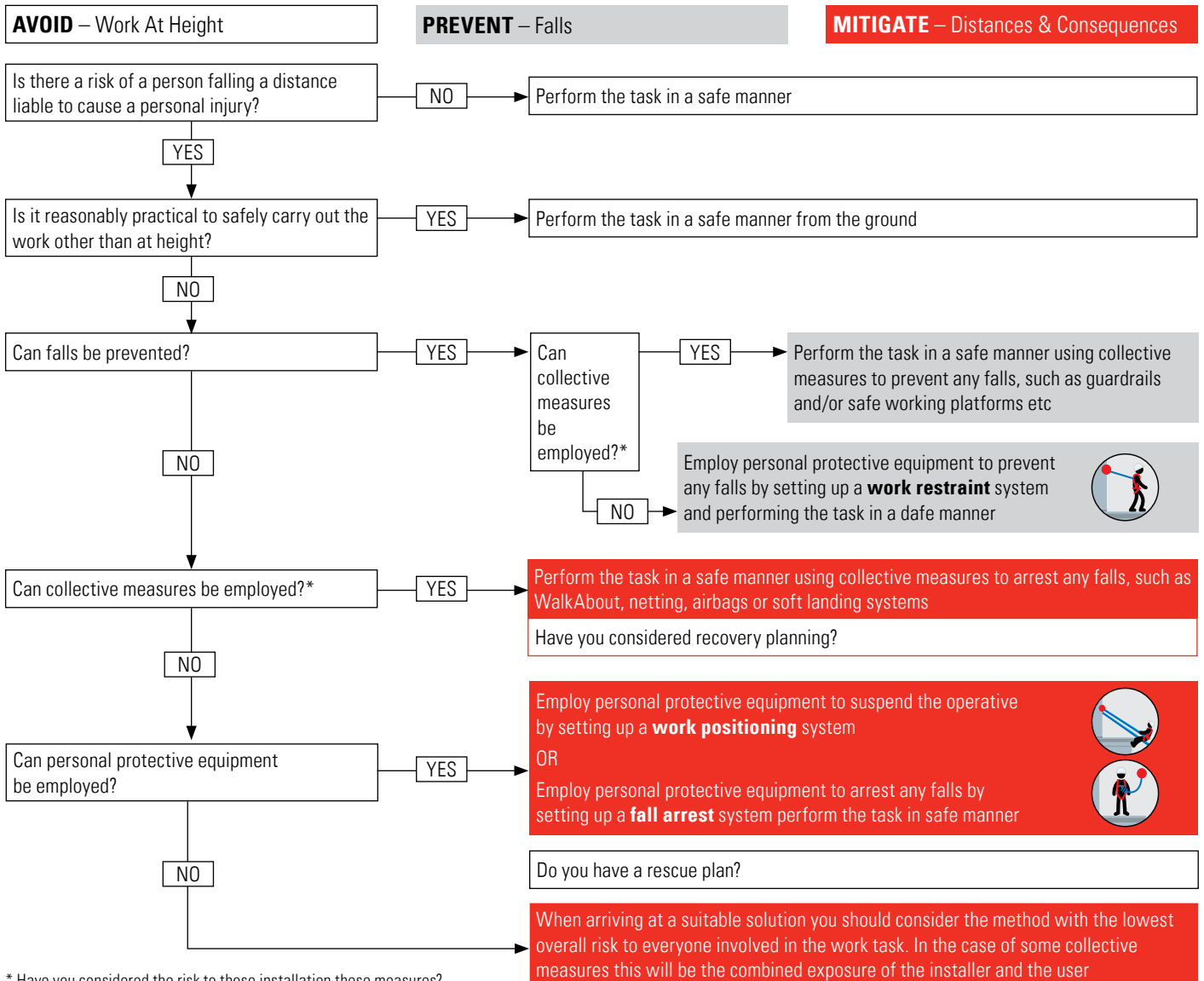
Quality  
ISO 9001:2008  
Lic:  
QEC5088

# HIERARCHY OF SAFETY MEASURES

Quality for Life



## Remember



\* Have you considered the risk to those installation these measures?



---

## HIERARCHY OF SAFETY MEASURES

---

### Guidance for Safe Work at Height

---



---

## Risk Assessment

### The Three Categories for the Use of Personal Fall Protection Equipment



#### Fall Restraint

Fall restraint is the preferred approach to fall protection – it prevents you from falling and from suffering possible injury from the fall arrest system. Work restraint is a technique which uses PPE to prevent a person from entering an area of where a risk of fall from height exists.



#### Work Positioning

Work Positioning is a technique for supporting a person while working by means of PPE in tension, in such a way as to prevent a fall.



#### Fall Arrest

Fall arrest is an approach which makes use of items of PPE to stop a falling person under safe conditions. This means that if a worker is in a position such that if he loses control he will fall, he is required to use PPE to limit both the distance and force of that fall.

Where your risk assessment shows a worker can fall, you must carefully plan how you will protect them. There are three basic levels of protection; avoidance, prevention, or mitigation. If work at height can be avoided then the risk of falling is eliminated.

If it is not possible to avoid working at height ways of preventing a fall should be addressed with preference placed on collective measure which protect all workers. Personal fall protection harnesses should only be used as a last resort.

In some situations it is not possible to prevent the fall, for example when climbing between various working levels/platforms. In this situation the worker requires some form of protection from the effects of the fall. This could be done by reducing the fall distance, or by limiting the impact force felt as the fall is arrested.

Again collective systems are given preference to a personal fall protection harness. It may not always be possible to provide fall protection to eliminate the risk of injury, therefore in these situations you must take steps to reduce the risk of falling as much as possible, for example through competence training when workers are left with a step ladder as the only method of work.

If your risk assessment shows that it is acceptable to use personal fall protection your workers will have three ways in which their equipment can be used. It is therefore essential to properly identify environment constraints and the type of protection the workers require.

The three techniques with which a harness can be used to protect workers are; Fall Restraint, Work Positioning and Fall Arrest. The workers must properly understand the level of risk and function of their equipment in each technique.







# SpanSet Training: the link between users and products

For further information  
[www.spanset.com.au](http://www.spanset.com.au)

---

## TRAINING

---

### Our Approach

---



---

## Introduction

The SpanSet method of training has been set up to offer a clearer explanation of the options available in Height Safety, Confined Space, Inspection, Evacuation and Vertical Rescue training. Our approach allows us to deliver consistent and concise training specific to the clients needs. Extra activities can be added into the training to further enhance the candidate's skills.

SpanSet trainers are highly qualified personnel, all with extensive industry experience.

SpanSet delivers training across a wide range of industries such as mining, telecommunications, theatre, councils, government authorities, ports, power authorities, construction and oil and gas drilling rigs. SpanSet can supply all training equipment upon request.

Each course sets out the following:

- The course duration
- Trainee to instructor ratio
- Course content
- Course split between theory and practical sessions.

### How it Works

The basis of all of the height safety training courses is Working Safely At Heights Theory and Practical. This provides all trainees with a solid foundation in safe work at heights from which they move on to the practical module to complete their competency as a height safety operator. Trainees can then choose extra courses to further enhance their qualifications and skills to height safety supervisor or manager.

### Certification

- RIIWHS204D  
Work Safely at Heights; or
- CPCCCM2010A  
Work Safely at Heights; or
- CPCPCM2035A  
Work Safely on Roofs.

A Statement of Attainment in either RIIWHS204D Work Safety at Heights, CPCPCM2015A Work Safety on Roofs, or CPCCCM1006A Work Safety at Heights will be issued to candidates who have successfully completed both practical and theory.

### Height Safety Training

These courses are structured to provide candidates with the necessary practical skills and theoretical understanding to undertake work at height on a broad range of structures and differing environments; as well as working safely in the vicinity of unprotected edges or on steep ground.

### Rescue Training

These courses provide candidates with the skills and knowledge to set up and conduct rope rescue of a suspended or injured casualty using a pre-rigged proprietary rope rescue system. Includes necessary skills to respond to a variety of post-fall rescue situations such as high/low anchor rescue, casualty evacuation, rescue off inertia reels, rescue off vertical lifelines and off towers, masts or structures.

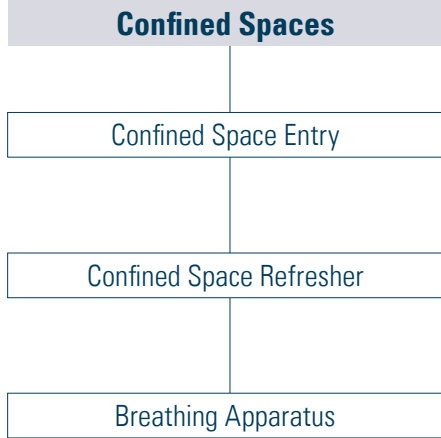
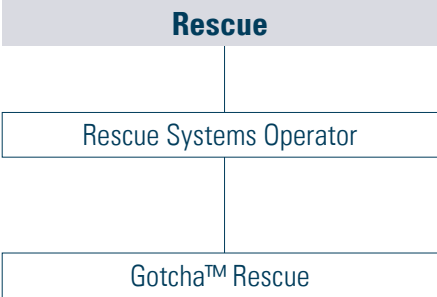
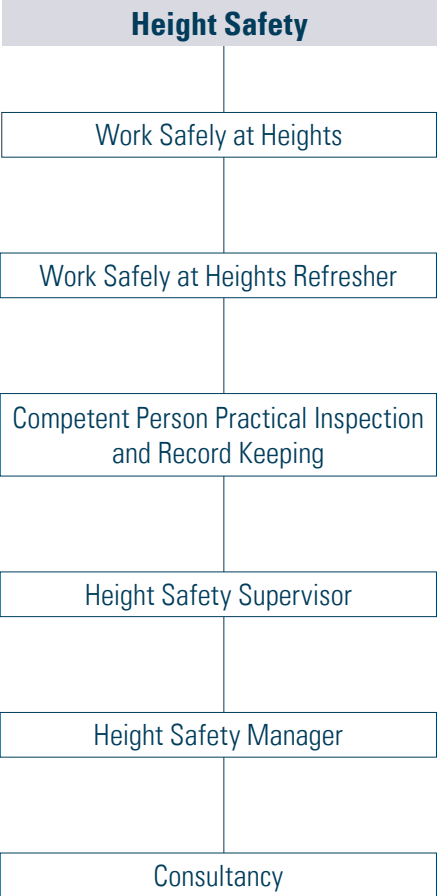


**TRAINING**

Our Approach



Introduction





# 01.1



SpanSet  
HEIGHT SAFETY

SpanSet®

## Harnesses

ERGOplus	20
ERGO	26
HotWorks	34
WaterWorks	40
RopeWorks	46
ToughWorks	50
StageWorks	54

**ERGOplus**

When using this product, please read the instructions carefully. The instructions are located on the inside of the product. Please refer to the instructions for proper use and safety. The instructions are also available on our website at [www.spanset.com](http://www.spanset.com).  
Instructions  
Date: 1/12  
Rev: 1.0



## 01.1 HEIGHT SAFETY HARNESSSES

### ERGOplus

ERGO  
HotWorks  
WaterWorks  
RopeWorks  
ToughWorks  
StageWorks



## ERGOplus Premium Harness Range

### Safety, comfort and exceptional value. Introducing the ERGOplus range of Harnesses from SpanSet.

Made in Australia, these AS/NZS 1891.1 2007 certified premium harnesses are manufactured to ensure comfort, safety, and practicality.

The soft, breathable composite mesh and foam padding gives the harness form, virtually eliminates tangling, and enhances the likelihood of correct fitting. It offers the security of being permanently affixed while still allowing adjustment.

### Standard Features







### ERGOplus

ERGO  
HotWorks  
WaterWorks  
RopeWorks  
ToughWorks  
StageWorks

---

---

## ERGOplus Premium Harness Range

### Xtreme-Guard Webbing with Self Healing Matrix

A super soft feel webbing which has been treated with a non toxic compound to maximise oil and water resistance. This makes cleaning a much easier task and enhances abrasion resistance. The treatment will self repair should the extremely thin polymer coating become damaged, due to its plasticine like flow qualities and the ability to re-close mechanically.

Larger sizes to suit:

M = up to XXL shirt size,

L = 3XL,

XL = 4XL,

XXL = 5XL

Stainless Steel 2/3 Bar Buckles

(To replace quick connect buckles) add "SS" to code ie: 1100 ERGOplusSS

- 1 Confined space attachment loops**  
Fully encapsulated loops to eliminate snagging and minimise metal components in contact with the body.
- 2 Front D ring rated for fall arrest**  
For ease of rescue and attachment. Made to order, no charge options for ERGOplus harnesses.
- 3 Stainless steel easy glide buckles**  
Easy to adjust and webbing friendly. They do not creep in use and are as small as possible to minimise contact with the body.
- 4 Suspension relief straps**  
Should an operative become suspended and is still conscious, simply join the two adjustable straps together to form a loop into which the operative can stand in order to further relieve the pressure on the inner thigh and work the leg muscles to aide circulation.
- 5 Soft construction**  
The hip is a critical pressure point when a fall occurs. The presence of any metal component here can increase the chance of injury, hence our "soft" approach.
- 6 Quick connect buckles**  
Ease and convenience add to ready worker acceptance and compliance. Both pawls need to be activated simultaneously to disengage. Has the added layer of safety with double retaining teeth on the male connector.

- 7 Large D ring**  
Easy to locate and connect to. The large D ring is always orientated correctly due to the design and configuration of the webbing. It does not require springs or gadgets to hold it in place.
- 8 Composite foam/mesh breathable padding**  
Fits like a jacket and is virtually tangle free. Almost impossible to fit incorrectly leading to safer compliance. Offers the security of being permanently attached while still allowing full adjustment.
- 9 Padded leg straps**  
Simplifies the donning by virtually eliminating twists in the leg strap. Greatly enhances comfort should an operative become suspended.
- 10 Sub Pelvic Strap**  
The sub pelvic strap eliminates the potential to "peel" out of the harness when falling backwards in a crouched position, (when the folded body allows the buttocks and upper legs to slip out of the back of the harness). Many harnesses do not have this feature or the design is insufficient to retain the person in this manner. Elastic harnesses can be particularly vulnerable to this.

## 01.1 HEIGHT SAFETY HARNESSSES

### ERGOplus

ERGO  
HotWorks  
WaterWorks  
RopeWorks  
ToughWorks  
StageWorks



### 1100 ERGOplus

#### Designation: Full body harness

- Rear fall arrest D ring
- Front fall arrest D ring
- Confined space attachment loops
- Fully adjustable leg and shoulder straps
- Fully padded leg and shoulder straps
- Suspension trauma relief straps

#### Suitable for:

Fall arrest, confined space entry, roof work, ladder systems, elevated work platforms, maintenance, construction etc

Code: 1100 ERGOplus



### 1104 ERGOplus

#### Designation: Full body harness

- Rear fall arrest D ring
- Front fall arrest D ring
- Rear fall arrest extension strap
- Confined space attachment loops
- Fully adjustable leg and shoulder straps
- Fully padded leg and shoulder straps
- Suspension trauma relief straps

#### Suitable for:

Fall arrest, confined space entry, roof work, ladder systems, elevated work platforms, maintenance, construction etc

Code: 1104 ERGOplus



---

## 01.1 HEIGHT SAFETY HARNESSSES

---



### ERGOplus

ERGO  
HotWorks  
WaterWorks  
RopeWorks  
ToughWorks  
StageWorks

---



### 1107 ERGOplus

#### Designation: Full body harness

- Rear fall arrest D ring
- Front fall arrest D ring
- Padded waist band and side D rings
- Rear fall arrest extension strap
- Confined space attachment loops
- Fully adjustable leg and shoulder straps
- Fully padded leg and shoulder straps
- Suspension trauma relief straps

#### Suitable for:

Fall arrest, confined space entry, roof work, ladder systems, elevated work platforms, pole work, maintenance, construction etc

Code: 1107 ERGOplus

---



### 1600 ERGOplus

#### Designation: Full body tower harness

- Rear fall arrest D ring
- Front fall arrest loops
- Padded waist band and side pole strap D rings
- Auxiliary buttock pole strap D rings
- Confined space attachment loops
- Fully adjustable padded leg and shoulder straps
- Extra wide suspension seat
- Suspension trauma relief straps

#### Suitable for:

Fall arrest, confined space entry, ladder systems, tower and pole work, maintenance, telecoms etc

Code: 1600 ERGOplus



---

## 01.1 HEIGHT SAFETY HARNESSSES

---

### ERGOplus

ERGO  
HotWorks  
WaterWorks  
RopeWorks  
ToughWorks  
StageWorks

---



---

### 1600 NC ERGOplus

**Designation: Full body tower harness – non-conductive**

- Rear fall arrest webbing D ring
- Front fall arrest loops
- Padded waist band and side pole strap D rings
- Auxiliary buttock pole strap D rings
- Confined space attachment loops
- Fully adjustable padded leg and shoulder straps
- Extra wide suspension seat
- Suspension trauma relief straps
- No steel hardware above waist

**Suitable for:**

Fall arrest, confined space entry, ladder systems, tower and pole work, maintenance, telecoms etc

Code: 1600NC ERGOplus

---



---

## 01.1 HEIGHT SAFETY HARNESSSES

---



### ERGOplus

ERGO  
HotWorks  
WaterWorks  
RopeWorks  
ToughWorks  
StageWorks

---



---

### 1800 ERGOplus

#### Designation: Full body suspension harness

- Rear fall arrest D ring
- Front fall arrest and abseil wide mouth D rings
- Padded waist band and side pole strap wide mouth D rings
- Plastic reinforced semi-rigid gear loops
- Elasticised rear leg droppers
- Fully adjustable padded leg and shoulder straps
- Quick release shoulder buckle

#### Suitable for:

Fall arrest, rescue, rope access, roof work, ladder systems, tower and pole work, maintenance, construction etc

Code: 1800 ERGOplus

---



### 1100 ERGOplus Miners

#### Designation: Full body harness

- Rear fall arrest D ring
- Front fall arrest D ring
- Padded waist band with battery and self rescuer straps
- Confined space attachment loops
- Suspension trauma relief straps
- Fully adjustable padded leg and shoulder straps

#### Suitable for:

Fall arrest, confined space entry, ladder systems, elevated work platforms, underground mining, maintenance, construction etc

Code: 1100 ERGOplus Miners

## 01.1 HEIGHT SAFETY HARNESSSES

ERGOplus

**ERGO**

HotWorks

WaterWorks

RopeWorks

ToughWorks

StageWorks



## ERGO Harness Range

Made in Australia, these AS/NZS 1891.1 2007 approved value harnesses are manufactured to ensure comfort, safety, and practicality. The breathable rear mesh panel gives the harness form, simplifies donning and minimises tangling. Features SpanSet redundancy backup design and robust construction.

### Standard Features







## ERGO Harness Range

### 1 Confined space attachment loops

Fully encapsulated loops to eliminate snagging and minimise metal components in contact with the body.

### 2 Front D ring rated for fall arrest

For ease of attachment and ideal for ladder systems work. Greatly enhances rescue access should an operative become suspended.

### 3 Polished steel easy glide buckles

Easy to adjust and webbing friendly. They do not creep in use, and are as small as possible to minimise metal contact with the body.

### 4 Suspension relief straps

Should an operative become suspended and is still conscious, simply join the two adjustable straps together to form a loop into which the operative can stand in order to further relieve the pressure on the inner thigh and work the leg muscles to aide circulation.

### 5 Soft construction

The hip is a critical pressure point when a fall occurs. The presence of any metal component here can increase the chance of injury, hence our "soft" approach.

### 6 2/3 bar connecting buckles

Ease and convenience add to ready worker acceptance and compliance. Secure and reliable while still being easy to adjust.

### 7 Large Rear D ring

Easy to locate and connect to. The large D ring is always orientated correctly due to the design and configuration of the webbing. It does not require springs or gadgets to hold it in place.

### 8 Breathable rear mesh panel

Fits like a jacket and allows the quick identification of the correct donning orientation while giving the harness "body" and form.

### 9 Sub Pelvic Strap

The sub pelvic strap minimises the potential to "peel" out of the harness when falling backwards in a crouched position, (when the folded body allows the buttocks and upper legs to slip out of the back of the harness).

## 01.1 HEIGHT SAFETY HARNESSSES

ERGOplus

**ERGO**

HotWorks

WaterWorks

RopeWorks

ToughWorks

StageWorks



### 1100 ERGO

**Designation: Full body harness**

- Rear fall arrest D ring
- Front fall arrest D ring
- Confined space attachment loops
- Fully adjustable leg and shoulder straps
- Breathable rear mesh panel
- Hi-vis webbing
- Suspension trauma relief straps

**Suitable for:**

Fall arrest, confined space entry, roof work, ladder systems, elevated work platforms, maintenance, construction etc

Code: 1100 ERGO



### 1104 ERGO

**Designation: Full body harness**

- Rear fall arrest D ring
- Front fall arrest D ring
- Rear fall arrest extension strap
- Confined space attachment loops
- Fully adjustable leg and shoulder straps
- Breathable rear mesh panel
- Hi-vis webbing
- Suspension trauma relief straps

**Suitable for:**

Fall arrest, confined space entry, roof work, ladder systems, elevated work platforms, maintenance, construction etc

Code: 1104 ERGO



---

## 01.1 HEIGHT SAFETY HARNESSSES

---



ERGOplus

### **ERGO**

HotWorks

WaterWorks

RopeWorks

ToughWorks

StageWorks

---



---

### **1107 ERGO**

#### **Designation: Full body harness**

- Front and rear fall arrest D rings
- Padded waist band and side D rings
- Rear fall arrest extension strap
- Confined space attachment loops
- Fully adjustable leg and shoulder straps
- Breathable rear mesh panel
- Hi-vis webbing
- Suspension trauma relief straps

#### **Suitable for:**

Fall arrest, confined space entry, roof work ladder systems, elevated work platforms, pole work, maintenance, construction etc

Code: 1107 ERGO

---



---

### **1300 ERGO**

#### **Designation: Full body harness**

- Front and rear fall arrest Ds
- Waist band and side D rings
- Confined space attachment loops
- Fully adjustable leg and shoulder straps
- Breathable rear mesh panel
- Hi-vis webbing
- Suspension trauma relief straps

#### **Suitable for:**

Fall arrest, confined space entry, roof work, ladder systems, elevated work platforms, pole work, maintenance, construction etc

Code: 1300 ERGO



## 01.1 HEIGHT SAFETY HARNESSSES

ERGOplus

**ERGO**

HotWorks

WaterWorks

RopeWorks

ToughWorks

StageWorks



### 1500 ERGO

**Designation: Full body tower harness**

- Rear fall arrest D ring
- Auxiliary 75mm pole strap rings
- Padded waist band and side pole strap D rings
- Front fall arrest loops
- Confined space attachment loops
- Fully adjustable leg and shoulder straps
- Breathable rear mesh panel
- Hi-vis webbing
- Suspension trauma relief straps

**Suitable for:**

Fall arrest, confined space entry, ladder systems, tower and pole work, maintenance, construction etc

Code: 1500 ERGO



### 1800 ERGO

**Designation: Full body suspension harness**

- Rear fall arrest D ring
- Front fall arrest and abseil wide mouth D rings
- Padded waist band and side pole strap wide mouth D rings
- Plastic reinforced gear loops
- Elasticised rear leg droppers
- Fully adjustable leg and shoulder straps
- Quick release shoulder buckle
- Hi-vis webbing

**Suitable for:**

Fall arrest, rescue, rope access, roof work, ladder systems, tower and pole work, maintenance, construction etc

Code: 1800 ERGO



---

## 01.1 HEIGHT SAFETY HARNESSSES

---



ERGOplus

### **ERGO**

HotWorks

WaterWorks

RopeWorks

ToughWorks

StageWorks

---



---

### **1100 Miner**

#### **Designation: Full body harness**

- Rear fall arrest D ring
- Front fall arrest D ring
- Padded waist band with battery and self rescuer straps
- Confined space attachment loops
- Fully adjustable leg and shoulder straps
- Breathable rear mesh panel
- Hi-vis webbing
- Suspension trauma relief straps

#### **Suitable for:**

Fall arrest, confined space entry, ladder systems, elevated work platforms, underground mining, maintenance, construction etc

Code: 1100 Miner

---



---

### **1150 ERGO**

#### **Designation: Full body harness**

- Rear fall arrest D ring
- Front fall arrest D ring
- 1.8m energy absorbing lanyard permanently attached
- Confined space attachment loops
- Fully adjustable leg and shoulder straps
- Breathable rear mesh panel
- Hi-vis webbing
- Suspension trauma relief straps

#### **Suitable for:**

Fall arrest, confined space entry, ladder systems, elevated work platforms, hire industry, maintenance, construction etc

Code: 1150 ERGO

## 01.1 HEIGHT SAFETY HARNESSSES

ERGOplus

**ERGO**

HotWorks

WaterWorks

RopeWorks

ToughWorks

StageWorks



### 1150 ERGO NC

**Designation: Full body harness, non-conductive (waist up)**

- Rear fall arrest webbing D ring
- Front fall arrest loops
- Elasticised energy absorbing lanyard permanently attached
- Confined space attachment loops
- Fully adjustable leg and shoulder straps
- Breathable rear mesh panel
- Hi-vis webbing
- Suspension trauma relief straps

**Suitable for:**

Fall arrest, confined space entry, live line ladder systems, elevated work platforms, hire industry, maintenance, construction etc

Code: 1150NC ERGO



### 1100 Scaffolder

**Designation: Full body harness**

- Rear fall arrest D ring
- Front fall arrest D ring
- Heavy duty abrasion resistant shoulder strap sleeves
- Fully adjustable leg and shoulder straps
- Breathable rear mesh panel
- Hi-vis webbing
- Suspension trauma relief straps

**Suitable for:**

Fall arrest, scaffold tube and planking tasks, ladder systems, elevated work platforms, maintenance, construction etc

Code: 1100 Scaffolder





---

## 01.1 HEIGHT SAFETY HARNESSSES

---



ERGOplus

**ERGO**

HotWorks

WaterWorks

RopeWorks

ToughWorks

StageWorks

---

---

### 2700 Pole Strap

2.5m pole strap with adjuster and snap hooks comes with polyester webbing wear sleeve. 3.5m (2701) also available.

Code: 2700



---

### 2750 Steelwork Pole Strap

2.5m pole strap with adjuster and snap hooks comes with robust secutex® cut resistant wear sleeve. secutex® is used extensively throughout industry to protect synthetic lifting slings from sharp edges and generally outlasts the synthetic sling/pole strap.

Code: 2750



## 01.1 HEIGHT SAFETY HARNESSSES

ERGOplus

ERGO

**HotWorks**

WaterWorks

RopeWorks

ToughWorks

StageWorks



### HotWorks Premium Heat Resistant Range

Made in Australia, these AS/NZS 1891.1 2007 approved premium harnesses are manufactured to ensure comfort, safety and practicality. The soft Heracron/Meta aramid webbing is heat resistant for welding and hotwork applications, while the padding is constructed from INDURA ultrasoft heat and molten splash resistant material.

#### Standard Features





ERGOplus  
ERGO  
**HotWorks**  
WaterWorks  
RopeWorks  
ToughWorks  
StageWorks

---

### **1 Confined space attachment loops**

Reverse folded loops to eliminate snagging and minimise metal components in contact with the body.

### **2 Front attachments rated for fall arrest**

For versatility and ease of rescue.

### **3 Stainless steel easy glide buckles**

Easy to adjust and webbing friendly. They do not creep in use and are as small as possible to minimize metal contact with the body.

### **4 Soft construction**

The hip is a critical pressure point when a fall occurs. The presence of any metal component here can increase the chance of injury, hence our "soft" approach.

### **5 Padded leg straps**

Simplifies the donning by virtually eliminating twists in the leg strap. Greatly enhances comfort should an operative become suspended.

### **6 Large D ring**

Easy to locate and connect to. The large D ring is always orientated correctly due to the design and configuration of the webbing. It does not require springs or gadgets to hold it in place.

### **7 Composite foam breathable padding**

Soft and cotton like feel for additional comfort and excellent heat resistance.

### **8 Sub pelvic strap**

The sub pelvic strap eliminates the potential to "peel" out of the harness when falling backwards in a crouched position, (when the folded body allows the buttocks and upper legs to slip out of the back of the harness). Many harnesses do not have this feature or the design is insufficient to retain the person in this manner. Elastic harnesses can be particularly vulnerable to this.

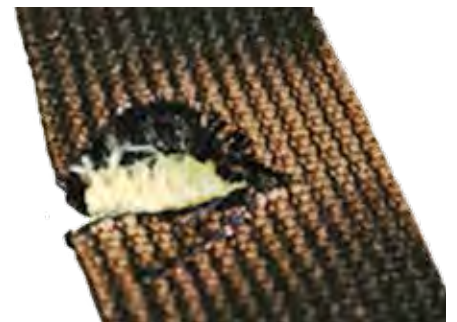
Suspension trauma relief straps available separately.

---

## HotWorks Premium Heat Resistant Range

### **Heracron/Meta Aramid Webbing**

Heat resistant webbing after exposure to direct flame. Internal fibres of Meta Aramid (black) and Heracron (yellow) remain unaffected.



Made to order, no charge options for HotWorks harnesses.

Quick Release Steel Buckles.  
Add "QB" to code ie: 1100 HotWorks QB





---

## 01.1 HEIGHT SAFETY HARNESSSES

---

ERGOplus

ERGO

**HotWorks**

WaterWorks

RopeWorks

ToughWorks

StageWorks

---



---

### 1100 HotWorks

**Designation: Full body harness**

- Rear fall arrest D ring
- Front fall arrest D ring
- Confined space attachment loops
- Fully adjustable leg and shoulder straps

**Suitable for:**

Fall arrest, confined space entry, roof work ladder systems, elevated work platforms, maintenance, construction etc

Code: 1100 HotWorks



---

### 1107 HotWorks

**Designation: Full body harness**

- Rear fall arrest D ring
- Front fall arrest D ring
- Confined space attachment loops
- Side pole strap D rings
- Fully adjustable leg and shoulder straps
- Heat resistant padded leg and waist straps

**Suitable for:**

Fall arrest, confined space entry, roof work ladder systems, elevated work platforms, maintenance, construction etc

Code: 1107 HotWorks





### 1600 HotWorks

**Designation: Full body tower harness**

- Rear fall arrest D ring
- Front fall arrest loops
- Padded waist band and side pole strap D rings
- Auxiliary buttock pole strap D rings
- Confined space attachment loops
- Padded waist and buttock/suspension strap
- Extra wide suspension seat

**Suitable for:**

Fall arrest, confined space entry, ladder systems, tower and pole work, maintenance, telecoms etc

Code: 1600 HotWorks



### 1800 HotWorks

**Designation: Full body suspension harness**

- Rear fall arrest D ring
- Front fall arrest and abseil wide mouth D rings
- Padded waist band and side pole strap wide mouth D rings
- Stainless steel 2 bar buckles
- Elasticised rear leg droppers
- Fully adjustable padded leg straps
- Quick release shoulder buckle

**Suitable for:**

Fall arrest, rescue, rope access, roof work, ladder systems, tower and pole work, maintenance, construction etc

Code: 1800 HotWorks

---

## 01.1 HEIGHT SAFETY HARNESSSES

---

ERGOplus

ERGO

**HotWorks**

WaterWorks

RopeWorks

ToughWorks

StageWorks

---



---

### 1300 HotWorks

**Designation: Full body harness**

- Rear fall arrest D ring
- Front fall arrest D ring
- Side pole strap D rings
- Confined space attachment loops
- Fully adjustable leg and shoulder straps

**Suitable for:**

Fall arrest, confined space entry, roof work, ladder systems, elevated work platforms, maintenance, construction etc

Code: 1300 HotWorks



---

### 2700 HotWorks Pole Strap

Heat resistant Pole Strap with adjuster and H1 hooks each end.

Suitable for pole, tower, access and climbing applications.

Code: 2700 HotWorks







For further information  
[www.spanset.com.au](http://www.spanset.com.au)

## 01.1 HEIGHT SAFETY HARNESSSES

ERGOplus  
ERGO  
HotWorks  
**WaterWorks**  
RopeWorks  
ToughWorks  
StageWorks



### WaterWorks Premium Corrosion Resistant Range

SpanSet's WaterWorks range of harnesses are suited to the extreme environments of the offshore, oil and gas, chemical, water utilities and sewerage treatment Industries.

Made in Australia these AS/NZS 1891.1 2007 approved premium harnesses are manufactured to ensure comfort, safety, and longevity, incorporating our Xtreme-guard oil, water and abrasion resistant webbing.

The soft, fixed, breathable composite mesh and foam padding gives the harness form, virtually eliminates tangling, and enhances the likelihood of correct fitting.

Fitted with corrosion resistant stainless steel D rings and buckles which feature no moving parts for the ultimate in reliability and safety. Non padded versions are also offered.

#### Standard Features





## WaterWorks Premium Corrosion Resistant Range

### Xtreme-Guard Webbing with Self Healing Matrix

A super soft feel webbing which has been treated with a non toxic compound to maximise oil and water resistance. This makes cleaning a much easier task and enhances abrasion resistance. The treatment will self-repair should the extremely thin polymer coating become damaged due to its plasticine like flow qualities and the ability to re-close mechanically affected areas itself.

#### 1 Confined space attachment loops

Fully encapsulated loops to eliminate snagging and minimise metal components in contact with the body.

#### 2 Front stainless steel D ring rated for fall arrest

For ease of rescue.

#### 3 Stainless steel easy glide buckles

Easy to adjust and webbing friendly. They do not creep in use and are as small as possible to minimise metal contact with the body.

#### 4 Suspension relief straps

Should an operative become suspended and is still conscious, simply join the two adjustable straps together to form a loop into which the operative can stand in order to further relieve the pressure on the inner thigh and work the leg muscles to aide circulation.

#### 5 Soft construction

The hip is a critical pressure point when a fall occurs. The presence of any metal component here can increase the chance of injury, hence our "soft" approach.

#### 6 Stainless steel easy glide 2/3 bar connector buckles.

Safe and proven over many years to be the most secure method of connection. These buckles have no moving parts, no catches or springs to get jammed by dirt, dust, or loose clothing. Corrosion resistant, easy to adjust and sized to minimise the metal to body contact.

#### 7 Padded leg straps

Simplifies the donning by virtually eliminating twists in the leg strap. Greatly enhances comfort should an operative become suspended.

#### 8 Large stainless steel D ring

Easy to locate and connect to. The large D ring is always orientated correctly due to the design and configuration of the webbing. It does not require springs or gadgets to hold it in place.

#### 9 Integral composite foam/mesh breathable padding

Fits like a jacket and is virtually tangle free. Almost impossible to fit incorrectly leading to safer compliance. Offers the security of being permanently affixed while still allowing full adjustment.

#### 10 Sub Pelvic Strap

The sub pelvic strap eliminates the potential to "peel" out of the harness when falling backwards in a crouched position, (when the folded body allows the buttocks and upper legs to slip out of the back of the harness). Many harnesses do not have this feature or the design is insufficient to retain the person in this manner. Elastic harnesses can be particularly vulnerable to this.



## 01.1 HEIGHT SAFETY HARNESSSES

ERGOplus  
ERGO  
HotWorks  
**WaterWorks**  
RopeWorks  
ToughWorks  
StageWorks



### 1100 WaterWorks Premium

#### Designation: Full body harness

- Stainless steel rear D rings
- Front fall arrest stainless steel D rings
- Stainless steel buckles
- Confined space loops on shoulders
- Fully adjustable padded leg straps and shoulder/back straps
- Easy-flow sweat absorbing mesh and foam composite padding
- Fitted with suspension trauma relief straps

#### Suitable for:

Fall arrest, confined space entry, roof work, ladder systems, elevated work platforms, maintenance, construction in corrosive environments etc

Code: 1100WW Premium



### 1107 WaterWorks Premium

#### Designation: Full body harness

- Stainless steel rear D ring
- Front fall arrest stainless steel D ring
- Stainless steel side pole strap D rings
- Stainless steel buckles
- Confined space loops on shoulders
- Fully adjustable padded leg straps and shoulder/back straps
- Easy-flow sweat absorbing mesh and foam composite padding
- Fitted with suspension trauma relief straps

#### Suitable for:

Fall arrest, confined space entry, roof work, ladder systems, elevated work platforms, maintenance, construction in corrosive environments etc

Code: 1107WW Premium



---

## 01.1 HEIGHT SAFETY HARNESSSES

---



ERGOplus  
ERGO  
HotWorks  
**WaterWorks**  
RopeWorks  
ToughWorks  
StageWorks

---



---

### 1100 WaterWorks

#### Designation: Full body harness

- Stainless steel rear D ring
- Front fall arrest stainless steel D ring
- Stainless steel buckles
- Confined space loops on shoulders
- Fully adjustable padded leg straps and shoulder/back straps
- Fitted with suspension trauma relief straps

#### Suitable for:

Fall arrest, confined space entry, roof work, ladder systems, elevated work platforms, maintenance, construction in corrosive environments etc

Code: 1100WW

---



---

### 1300 WaterWorks

#### Designation: Full body harness

- Stainless steel rear D ring
- Front fall arrest stainless steel D ring
- Side pole strap stainless steel D rings
- Stainless steel buckles
- Confined space loops on shoulders
- Fully adjustable padded leg straps and shoulder/back straps
- Fitted with suspension trauma relief straps

#### Suitable for:

Fall arrest, confined space entry, roof work, ladder systems, pole work, elevated work platforms, maintenance, construction in corrosive environments etc

Code: 1300WW

---

## 01.1 HEIGHT SAFETY HARNESSSES

---

ERGOplus

ERGO

HotWorks

**WaterWorks**

RopeWorks

ToughWorks

StageWorks

---



---

### 1800 WaterWorks

**Designation: Full body suspension harness**

- Rear fall arrest stainless D ring
- Front fall arrest and abseil stainless D rings
- Padded waist band and side pole strap with stainless D rings
- Plastic reinforced gear loops
- Elasticised rear leg droppers
- Fully adjustable leg and shoulder straps
- Stainless shoulder buckles
- Hi-vis webbing

**Suitable for:**

Fall arrest, rescue, rope access, roof work, ladder systems, tower and pole work, maintenance, construction etc

Code: 1800WW

---



---

### 1100 WaterWorks ERGO – Miners

**Designation: Full body harness**

- Rear fall arrest stainless D ring
- Front fall arrest stainless D ring
- Padded waist band with battery and self rescuer straps
- Confined space attachment loops
- Fully adjustable leg and shoulder straps
- Padded shoulder and leg straps
- Hi-vis webbing
- Suspension trauma relief straps

**Suitable for:**

Fall arrest, confined space entry, ladder systems, elevated work platforms, underground mining, maintenance, construction etc

Code: 1100WW ERGO Miners

---







m.au

For further information  
[www.spanset.com.au](http://www.spanset.com.au)

## 01.1 HEIGHT SAFETY HARNESSSES

ERGOplus  
ERGO  
HotWorks  
WaterWorks  
**RopeWorks**  
ToughWorks  
StageWorks



### RopeWorks Premium Lightweight Harness Range

The RopeWorks range of harnesses are made in Australia and are AS/NZS 1891.1 2007 compliant. These premium harnesses are manufactured to ensure comfort, safety, and practicality.

Ultra lightweight to minimise fatigue and improve worker acceptance. This range takes height safety to a new level while our Xtreme-Guard oil, water and abrasion resistant webbing ensures on-going value for the user.

#### Standard Features





---

## RopeWorks Premium Lightweight Harness Range

### **1 Aluminium Buckles**

Easy to adjust and webbing friendly. They do not creep in use and are as small as possible to minimise metal contact with the body.

### **2 Quick connect buckle**

Ease and convenience add to ready worker acceptance and compliance. Both pawls need to be activated simultaneously to disengage. Placed only where required.

### **3 Forged Aluminium D Rings**

Lightweight, strong and where you need them.

### **4 Composite foam/mesh breathable padding**

Fits like a jacket and is virtually tangle free. Almost impossible to fit incorrectly leading to safer compliance. Permanently affixed while still allowing adjustment.

### **5 Xtreme Guard webbing**

Superior oil, water and abrasion resistance adds to extended product life.

### **6 Reinforced waist pad**

30mm thick padding for comfort with stiffened outer shell for added support.

### **7 Semi rigid tool loops**

For quick and positive connection of karabiners and accessories.

### **8 Elasticised leg droppers**

For added comfort and auto adjustment when standing or sitting.

### **Xtreme-Guard Webbing with Self Healing Matrix**

A super soft feel webbing which has been treated with a non-toxic compound to maximise oil and water resistance. This makes cleaning a much easier task and enhances abrasion resistance. The treatment will self repair should the extremely thin polymer coating become damaged due to mechanical influences, because of its plasticine like flow qualities and the ability to reclose mechanically affected areas itself.



---

## 01.1 HEIGHT SAFETY HARNESSSES

---

ERGOplus  
ERGO  
HotWorks  
WaterWorks  
**RopeWorks**  
ToughWorks  
StageWorks

---



---

### 1100 ERGO RopeWorks

#### Designation: Full body harness

- Rear fall arrest D ring
- Front fall arrest D ring
- Confined space attachment loops
- Fully adjustable leg and shoulder straps
- Fully padded leg and shoulder straps
- Suspension trauma relief straps

#### Suitable for:

Fall arrest, confined space entry, roof work, ladder systems, elevated work platforms, maintenance, construction etc

Code: 1100 ERGO RW



---

### 1600 ERGO RopeWorks

#### Designation: Full body tower harness

- Rear fall arrest D ring
- Front fall arrest loops
- Padded waist band and side pole strap D rings
- Auxiliary buttock pole strap D rings
- Confined space attachment loops
- Fully adjustable padded leg and shoulder straps
- Extra wide suspension seat
- Suspension trauma relief straps

#### Suitable for:

Fall arrest, confined space entry, ladder systems, tower and pole work, maintenance, telecoms etc

Code: 1600 ERGO RW



---

## 01.1 HEIGHT SAFETY HARNESSSES

---



ERGOplus  
ERGO  
HotWorks  
WaterWorks  
**RopeWorks**  
ToughWorks  
StageWorks

---



---

### 1800 ERGO RopeWorks

**Designation: Full body suspension harness**

- Rear fall arrest D ring
- Front fall arrest and abseil wide mouth D rings
- Padded waist band and side pole strap wide mouth D rings
- Plastic reinforced semi rigid gear loops
- Elasticised rear leg droppers
- Fully adjustable padded leg and shoulder straps
- Quick release shoulder buckle

**Suitable for:**

Fall arrest, rescue, rope access, roof work, ladder systems, tower and pole work, maintenance, construction etc

Code: 1800 ERGO RW

---

## 01.1 HEIGHT SAFETY HARNESSSES

ERGOplus  
ERGO  
HotWorks  
WaterWorks  
RopeWorks  
**ToughWorks**  
StageWorks



### ToughWorks Abrasion Resistant Harness Range

Introducing the new ToughWorks range of Harnesses from SpanSet. Made in Australia these AS/NZ 1891.1 2007 approved premium harnesses are manufactured to ensure comfort, safety and practicality. Tough, PVC coated webbing ensures on-going value for the user.

#### Standard Features







---

ERGOplus  
ERGO  
HotWorks  
WaterWorks  
RopeWorks  
**ToughWorks**  
StageWorks

---

---

**1 Confined space attachment loops**

Fully encapsulated loops to eliminate snagging and minimise metal components in contact with the body.

**2 Front D ring rated for fall arrest**

For ease of rescue and attachment.

**3 PVC coated webbing**

For greater abrasion resistance in high wear applications.

**4 Steel slotted easy glide buckles**

Easy to adjust and webbing friendly. They do not creep in use and are as small as possible to minimise metal contact with the body.

**5 Suspension relief straps**

Should an operative become suspended and is still conscious, simply join the two adjustable straps together to form a loop into which the operative can stand in order to further relieve the pressure on the inner thigh and work the leg muscles to aide circulation.

**6 Soft construction**

The hip is a critical pressure point when a fall occurs. The presence of any metal component here can increase the chance of injury, hence our "soft" approach.

**7 Padded leg straps**

Simplifies the donning by virtually eliminating twists in the leg strap. Greatly enhances comfort should an operative become suspended.

**8 Large D ring**

Easy to locate and connect to. The large D ring is always orientated correctly due to the design and configuration of the webbing. It does not require springs or gadgets to hold it in place.

**9 Composite foam/mesh breathable padding**

Fits like a jacket and is virtually tangle free. Almost impossible to fit incorrectly leading to safer compliance. Offers the security of being permanently attached while still allowing full adjustment.

**10 Sub pelvic strap**

The sub pelvic strap eliminates the potential to "peel" out of the harness when falling backwards in a crouched position, (when the folded body allows the buttocks and upper legs to slip out of the back of the harness). Many harnesses do not have this feature or the design is insufficient to retain the person in this manner. Elastic harnesses can be particularly vulnerable to this.

---

ToughWorks Abrasion  
Resistant Harness Range

---

## 01.1 HEIGHT SAFETY HARNESSSES

---

ERGOplus  
ERGO  
HotWorks  
WaterWorks  
RopeWorks  
**ToughWorks**  
StageWorks

---



---

### 1100 ERGO ToughWorks

**Designation: Full body harness**

- Rear fall arrest D ring
- Front fall arrest D ring
- Confined space attachment loops
- Fully adjustable leg and shoulder straps
- Fully padded leg and shoulder straps
- Suspension trauma relief straps

**Suitable for:**

Fall arrest, confined space entry, roof work, ladder systems, elevated work platforms, maintenance, construction etc

Code: 1100 PVC



---

### 1107 ERGO ToughWorks

**Designation: Full body harness**

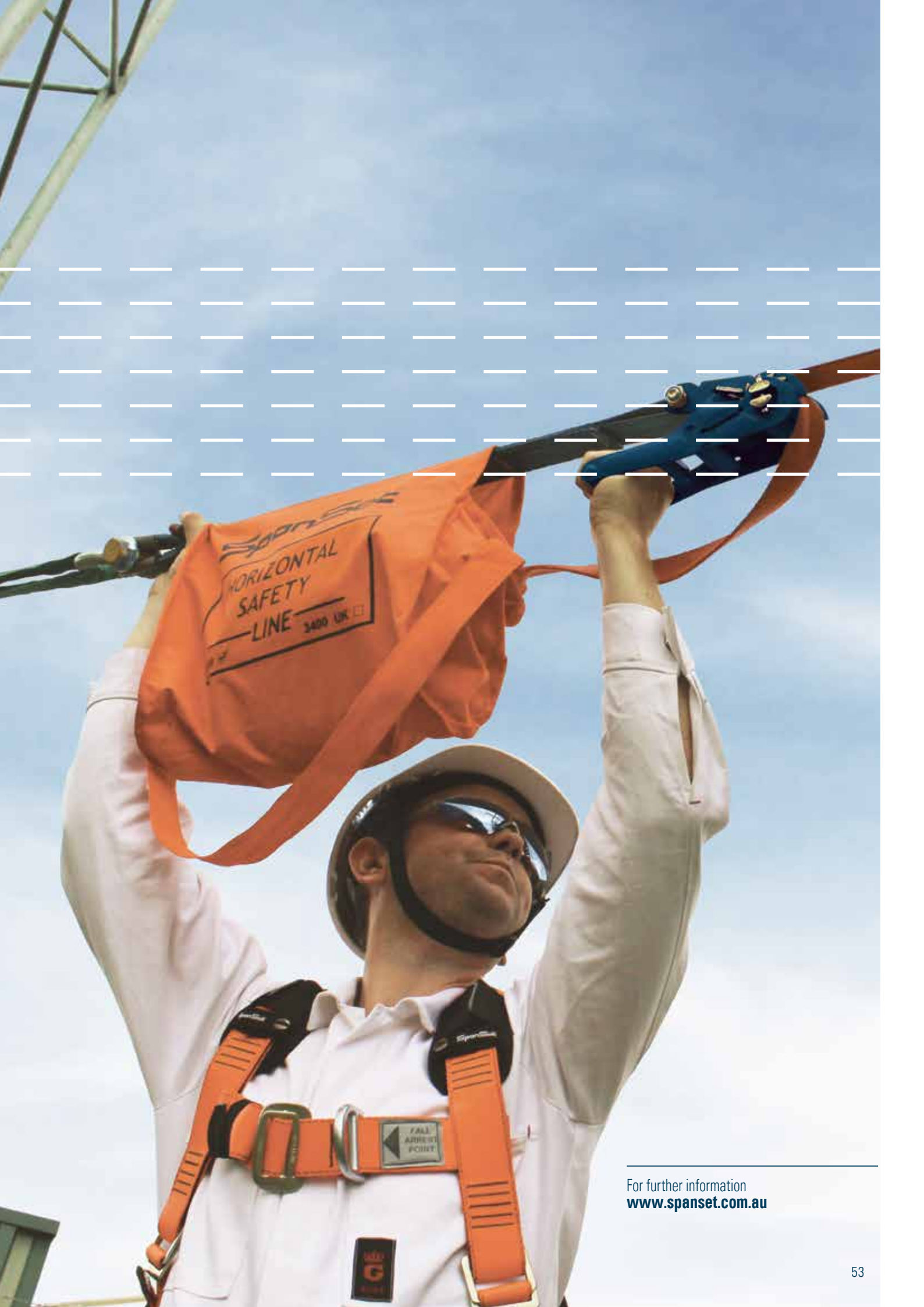
- Rear fall arrest D ring
- Front fall arrest D ring
- Padded waist band and side D rings
- Rear fall arrest extension strap
- Confined space attachment loops
- Fully adjustable leg and shoulder straps
- Fully padded leg and shoulder straps
- Suspension trauma relief straps

**Suitable for:**

Fall arrest, confined space entry, roof work, ladder systems, elevated work platforms, pole work, maintenance, construction etc

Code: 1107 PVC





For further information  
[www.spanset.com.au](http://www.spanset.com.au)



---

## 01.1 HEIGHT SAFETY HARNESSSES

---

ERGOplus  
ERGO  
HotWorks  
WaterWorks  
RopeWorks  
ToughWorks  
**StageWorks**

---

### StageWorks

Specifically designed for stage and background work for the entertainment industry and any clandestine applications where reduced equipment visibility is desirable. All black non reflective fittings and webbing ensure total discretion during tasks.

---



---

### 1100 ERGO StageWorks Premium

**Designation: Full body harness**

- Rear fall arrest D ring
- Front fall arrest D ring
- Confined space attachment loops
- Fully adjustable leg and shoulder straps
- Fixed fully padded shoulders and legs
- Black webbing and metal components
- Suspension trauma relief straps

**Suitable for:**

Entertainment, staging and clandestine – fall arrest, confined space entry, roof work, ladder systems, elevated work platforms, etc

Code: 1100 ERGO ENT Premium

---



---

### 1100 ERGO StageWorks

**Designation: Full body harness**

- Rear fall arrest D ring
- Front fall arrest D ring
- Confined space attachment loops
- Fully adjustable leg and shoulder straps
- Black webbing and metal components
- Suspension trauma relief straps

**Suitable for:**

Entertainment, staging and clandestine fall arrest, confined space entry, roof work, ladder systems, elevated work platforms, maintenance, construction etc

Code: 1100 ERGO ENT

---



---

## 01.1 HEIGHT SAFETY HARNESSSES

---



ERGOplus  
ERGO  
HotWorks  
WaterWorks  
RopeWorks  
ToughWorks  
**StageWorks**

---



---

### 1800 ERGO StageWorks

#### Designation: Full body suspension harness

- Rear fall arrest D ring
- Front fall arrest and abseil wide mouth D rings
- Padded waist band and side pole strap wide mouth D rings
- Plastic reinforced gear loops
- Elasticised rear leg droppers
- Fully adjustable leg and shoulder straps
- Quick release shoulder buckle
- Black webbing and metal components

#### Suitable for:

Entertainment, staging and clandestine – fall arrest, rescue, rope access, roof work, ladder systems, tower and pole work, maintenance, construction etc

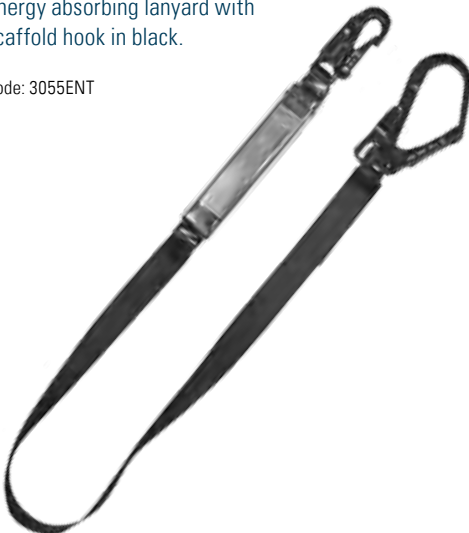
Code: 1800 ENT

---

### 3055 StageWorks

Energy absorbing lanyard with scaffold hook in black.

Code: 3055ENT



### 6002 StageWorks

Entertainment fall protection kit containing 1 x 1100ENT full body harness, 1 x 3055ENT Energy absorbing lanyard, 1 x RCB2010 2t 1m black round sling, 1 x K bag – black kit bag

Code: 6002ENT



# 01.2





# SpanSet®

## Lanyards

ERGOplus	62
ERGO	68
HotWorks	82

## 01.2 LANYARDS

### ERGOplus

ERGO  
Other Lanyards  
HotWorks



## ERGOplus Lanyards

ERGOplus premium energy absorbing lanyards are designed to minimise the forces endured by an operator should a fall occur.

Maximum user weight is 140kg while still remaining within the parameters and certification to AS/NZS 1891.1 2007. No additional fall clearance needs to be calculated when performing risk assessments.

Lightweight aluminium components and Xtreme guard webbing combine to add outstanding safety and value to this range.

### Standard Features





**1 Aluminium lightweight fittings**  
Robust and lightweight, offers genuine user acceptance and confidence with less fatigue and high quality feel and function.

**2 140kg tear web energy absorber**  
Does not require additional fall clearance to comply to Australian standards.

**3 Kernmantle rescue standard rope**  
11mm kernmantle rope fully complies to AS 4142.3 with full length tracer tape and contrasting sheath over a white core. This allows an objective inspection criteria by highlighting the damaged sheath against the inner core and takes the guesswork and assumptions out of the inspection process.

**4 High density contrasted stitching**  
The high density multiple bar tack sew pattern resists abrasion better than traditional patterns. The contrasting colour makes inspection easier.

**5 XtremeGuard webbing**  
Highly abrasion resistant webbing gives better value and safety through longevity. Oil and liquid resistance aids the cleaning process and accelerates drying times. All this in a webbing that is soft and pliable to the touch.

**6 Stowage loops on all twin lanyards**  
The need for an operator to avoid connecting an unused leg of a twin lanyard is critical. To avoid this, each SpanSet twin leg lanyard has clearly marked stowage points for unused lanyard legs. They are also rated in case of misuse.

## ERGOplus Lanyards

### Kernmantle Rescue Standard Rope





---

## 01.2 LANYARDS

---

### ERGOplus

ERGO  
Other Lanyards  
HotWorks

---



---

## ERGOplus Fittings

H1 Alu



K10 Alu



H3BF



WH3-Alu-0



H3 Alu



---

## 01.2 LANYARDS

---

### ERGOplus

ERGO  
Other Lanyards  
HotWorks

---



---

## Fitting Specifications

Code	Description	Gate Type	Gate Opening	Strength	Gate Strength	Weight	Material
<b>H1Alu</b>	Safety Hook	Double Action	23mm	25kN	≥1kN	200g	Aluminium
<b>H3-Alu-TA-0</b>	Safety Scaffold Hook	Triple Action	60mm	25kN	≥1kN	459g	Aluminium
<b>H3BF</b>	Safety Jumbo Scaffold Hook	Double Action	110mm	25kN	≥1kN	915g	Aluminium
<b>WH3-Alu-0</b>	Safety Wire Scaffold Hook	Double Action	86mm	20kN	≥1kN	488g	Aluminium
<b>K10Alu</b>	Fixed Eye Karabiner	Triple Action	20mm	25kN	≥1kN	120g	Aluminium

---

## 01.2 LANYARDS

---

### ERGOplus

ERGO  
Other Lanyards  
HotWorks

---



---

## ERGOplus Webbing Lanyards

3053-EP-K10 ERGOplus



3058 ERGOplus





## 01.2 LANYARDS

### ERGOplus

ERGO

Other Lanyards

HotWorks



### ERGOplus Webbing Lanyards

Code	Type	Material	Length	Fitting at Shock Absorber	Fitting at Free End(s)	Weight
<b>3053 ERGOplus</b>	Single Leg	Webbing	1.8m	H1 Alu Snap Hook	H1Alu Snap Hook	785g
<b>3053-EP-K10 ERGOplus</b>	Single Leg	Webbing	1.8m	K10 Karabiner	K10 Karabiner	875g
<b>3055 ERGOplus</b>	Single Leg	Webbing	1.8m	H1 Alu Snap Hook	H3-Alu-TA-0 Scaffold Hook	1131g
<b>3058 ERGOplus</b>	Twin Leg	Webbing	1.8m	H1 Alu Snap Hook	H3-Alu-TA-0 Scaffold Hook	1800g
<b>3053A ERGOplus</b>	Single Leg Adjustable	Webbing	0.75 – 1.8m	H1 Alu Snap Hook	H1Alu Snap Hook	910g
<b>3055A ERGOplus</b>	Single Leg Adjustable	Webbing	0.75 – 1.8m	H1 Alu Snap Hook	H3-Alu-TA-0 Scaffold Hook	1256g
<b>3058A ERGOplus</b>	Twin Leg Adjustable	Webbing	0.75 – 1.8m	H1 Alu Snap Hook	H3-Alu-TA-0 Scaffold Hook	2050g

---

## 01.2 LANYARDS

---

### ERGOplus

ERGO  
Other Lanyards  
HotWorks

---



---

## ERGOplus Elastic Lanyards

3055E ERGOplus



3058E ERGOplus



## 01.2 LANYARDS

### ERGOplus

ERGO

Other Lanyards

HotWorks



### ERGOplus Elastic Lanyards

Code	Type	Material	Length	Fitting at Shock Absorber	Fitting at Free End(s)	Weight
<b>3053E ERGOplus</b>	Single Leg	Webbing	1.4 – 1.8m	H1 Alu Snap Hook	H1Alu Snap Hook	785g
<b>3055E ERGOplus</b>	Single Leg	Webbing	1.4 – 1.8m	H1 Alu Snap Hook	H3-Alu-TA-0 Scaffold Hook	1131g
<b>3058E ERGOplus</b>	Twin Leg	Webbing	1.4 – 1.8m	H1 AluSnap Hook	H3-Alu-TA-0 Scaffold Hook	1800g
<b>3053E K10 ERGOplus</b>	Single Leg	Webbing	1.4 – 1.8m	K10 Alu Karabiner	K10Alu Karabiner	613g
<b>3058E BF ERGOplus</b>	Twin Leg	Webbing	1.4 – 1.8m	H1 Alu Snap Hook	H3BF Scaffold Hook	2712g
<b>3058E WBF ERGOplus</b>	Twin Leg	Webbing	1.4 – 1.8m	H1 Alu Snap Hook	WH3-Alu-0 Scaffold Hook	1858g



---

## 01.2 LANYARDS

---

### ERGOplus

ERGO  
Other Lanyards  
HotWorks

---



---

## ERGOplus Rope Lanyards

3063A ERGOplus



3068A ERGOplus



---

## 01.2 LANYARDS

---

### ERGOplus

ERGO  
Other Lanyards  
HotWorks

---



---

## ERGOplus Rope Lanyards

Code	Type	Material	Length	Fitting at shock absorber	Fitting at free end(s)	Weight
<b>3061 ERGOplus</b>	Single Leg	Rope	1.8m	H1Alu Snap Hook	H1Alu Snap Hook	900g
<b>3063 ERGOplus</b>	Single Leg	Rope	1.8m	H1Alu Snap Hook	H3-Alu-TA-0 Scaffold Hook	1246g
<b>3068 ERGOplus</b>	Twin Leg	Rope	1.8m	H1Alu Snap Hook	H3-Alu-TA-0 Scaffold Hook	2030g
<b>3063A ERGOplus</b>	Single Leg Adjustable	Rope	0.75 – 1.8m	K10 Alu Karabiner	H3-Alu-TA-0 Scaffold Hook	1661g
<b>3068A ERGOplus</b>	Twin Leg Adjustable	Rope	0.75 – 1.8m	K10 Alu Karabiner	H3-Alu-TA-0 Scaffold Hook	2260g

## 01.2 LANYARDS

ERGOplus  
**ERGO**  
Other Lanyards  
HotWorks



## ERGO Lanyards

ERGO energy absorbing lanyards are designed to minimise the forces endured by an operator should a fall occur. All SpanSet lanyards feature back up straps should the tear web be fully deployed and all are certified to AS/NZS 1891.1 2007.

With heavy duty, alloy steel, corrosion resistant components and high tenacity polyester webbing they offer outstanding safety and value to this range.

### Standard Features







## ERGO Lanyards

- 1 Heavy duty alloy steel fittings**  
Robust and lightweight, offers genuine user acceptance and confidence with corrosion resistance, high quality feel, and smooth function.
- 2 Tear web energy absorber**  
Limits the forces to under 6kN should a fall occur as per Australian/New Zealand standards.
- 3 High tensile contrasted stitching**  
The high tensile computerised sew pattern give repeatable uniformity compared to manual sew patterns. The contrasting colour makes inspection easier.
- 4 Stowage loops on all twin lanyards**  
The need for an operator to avoid connecting an unused leg of a twin lanyard is critical. To avoid this, each SpanSet twin leg lanyard has clearly marked stowage points for unused lanyard legs. They are also rated in case of misuse.

- 5 Polyester webbing**  
High tenacity polyester webbing gives better value, strength and safety through longevity. Polyester is UV resistant and does not lose strength when it becomes wet. All this in a high visibility webbing that is soft and pliable to the touch.
- 6 Kernmantle Rescue standard rope**  
11mm kernmantle rope fully complies to AS 4142.3 with full length tracer tape and contrasting sheath over a white core. This allows an objective inspection criteria by highlighting the damaged sheath against the inner core and takes the guesswork and assumptions out of the inspection process.

### Kernmantle Rescue Standard Rope



---

## 01.2 LANYARDS

---

ERGOplus  
**ERGO**  
Other Lanyards  
HotWorks

---



---

## ERGO Fittings

K2



H1



K10



K4



H1HD



N-3050



H3HD



H3



## 01.2 LANYARDS

ERGOplus

**ERGO**

Other Lanyards

HotWorks



## Fitting Specifications

Code	Description	Gate Type	Gate Opening	Strength	Gate Strength	Material	Weight
<b>K2</b>	Oval Karabiner	Screw Gate	15mm	23kN	≥1kN	Alloy Steel	157g
<b>K4</b>	Equal D Karabiner	Triple Action	24mm	30kN	≥1kN	Alloy Steel	183g
<b>K10</b>	Forged Eye Karabiner	Triple Action	20mm	50kN	≥1kN	Alloy Steel	257g
<b>H3</b>	Safety Scaffold Hook	Double Action	51mm	25kN	≥1kN	Alloy Steel	415g
<b>H3HD</b>	Safety Scaffold Hook	Double Action	60mm	25kN	≥16kN	Alloy Steel	780g
<b>H1</b>	Safety Hook	Double Action	21mm	25kN	≥1kN	Carbon Steel	280g
<b>H1HD</b>	Safety Hook	Double Action	21mm	45kN	≥16kN	Carbon Steel	369g
<b>N3050</b>	Safety Back Hook	Double Action	21mm	45kN	≥16kN	Alloy Steel	454g



---

## 01.2 LANYARDS

---

ERGOplus  
**ERGO**  
Other Lanyards  
HotWorks

---



---

## ERGO Webbing Lanyards

3053



3058



## 01.2 LANYARDS

ERGOplus

**ERGO**

Other Lanyards

HotWorks



### ERGO Webbing Lanyards

Code	Type	Material	Length	Fitting at Shock Absorber	Fitting at Free End(s)	Weight
<b>3051</b>	Shock Absorber	Webbing	0.45m	K2 Karabiner	K2 Karabiner	720g
<b>3053</b>	Single Leg	Webbing	1.8m	H1 Snap Hook	H1 Snap Hook	1070g
<b>3053 K4</b>	Single Leg	Webbing	1.8m	K4 Karabiner	K4 Karabiner	960g
<b>3054</b>	Single Leg	Webbing	1.2m	H1 Snap Hook	H1 Snap Hook	1050g
<b>3054 K4</b>	Single Leg	Webbing	1.2m	K4 Karabiner	K4 Karabiner	940g
<b>3055</b>	Single Leg	Webbing	1.8m	H1 Snap Hook	H3 Scaffold Hook	1320g
<b>3055 K4</b>	Single Leg	Webbing	1.8m	K4 Karabiner	H3 Scaffold Hook	1265g
<b>3058</b>	Twin Leg	Webbing	1.8m	H1 Snap Hook	H3 Scaffold Hook	2035g
<b>3058 K4</b>	Twin Leg	Webbing	1.8m	K4 Karabiner	K4 Karabiner	1490g
<b>3053A</b>	Single Leg Adjustable	Webbing	0.75 – 1.8m	H1 Snap Hook	H1 Snap Hook	1220g
<b>3055A</b>	Single Leg Adjustable	Webbing	0.75 – 1.8m	H1 Snap Hook	H3 Scaffold Hook	1470g
<b>3058A</b>	Twin Leg Adjustable	Webbing	0.75 – 1.8m	H1 Snap Hook	H3 Scaffold Hook	2335g

---

## 01.2 LANYARDS

---

ERGOplus  
**ERGO**  
Other Lanyards  
HotWorks

---



---

### ERGO Elastic Lanyards

3055E



3058E





## 01.2 LANYARDS

ERGOplus

**ERGO**

Other Lanyards

HotWorks



### ERGO Elastic Lanyards

Code	Type	Material	Length	Fitting at Shock Absorber	Fitting at Free End(s)	Weight
<b>3053E</b>	Single Leg	Webbing	1.4 – 1.8m	H1 Snap Hook	H1 Snap Hook	1115g
<b>3055E</b>	Single Leg	Webbing	1.4 – 1.8m	H1 Snap Hook	H3 Scaffold Hook	1310g
<b>3058E</b>	Twin Leg	Webbing	1.4 – 1.8m	H1 Snap Hook	H3 Scaffold Hook	1723g
<b>3053E K4</b>	Single Leg	Webbing	1.4 – 1.8m	K4 Karabiner	K4 Karabiner	1005g
<b>3053E K10</b>	Single Leg	Webbing	1.4 – 1.8m	K10 Karabiner	K10 Karabiner	1015g
<b>3058E K4</b>	Twin Leg	Webbing	1.4 – 1.8m	K4 Karabiner	K4 Karabiner	1669g
<b>3058E-K10H3-0x1.8</b>	Twin Leg	Webbing	1.4 – 1.8m	K10 Snap Hook	H3 Scaffold Hook	1690g

---

## 01.2 LANYARDS

---

ERGOplus  
**ERGO**  
Other Lanyards  
HotWorks

---



---

### ERGO Rope Lanyards

3061



3063



3061A-K4K4-0x2.0



## 01.2 LANYARDS

ERGOplus  
**ERGO**  
 Other Lanyards  
 HotWorks



### ERGO Rope Lanyards

Code	Type	Material	Length	Fitting at Shock Absorber	Fitting at Free End(s)	Weight
<b>3061</b>	Single Leg	Rope	1.8m	H1 Snap Hook	H1 Snap Hook	1215g
<b>3061 K4</b>	Single Leg	Rope	1.8m	K4 Karabiner	K4 Karabiner	1105g
<b>3063</b>	Single Leg	Rope	1.8m	H1 Snap Hook	H3 Scaffold Hook	1400g
<b>3061 K4</b>	Single Leg	Rope	1.8m	K4 Karabiner	K4 Karabiner	1105g
<b>3068</b>	Twin Leg	Rope	1.8m	H1 Snap Hook	H3 Scaffold Hook	1723g
<b>3068 K4</b>	Twin Leg	Rope	1.8m	K4 Karabiner	H3 Scaffold Hook	1723g
<b>3061A-K4K4-0x2.0</b>	Single Leg Adjustable	Rope	0.75 – 1.8m	K4 Karabiner	K4 Karabiner	1688g
<b>3063A K4</b>	Single Leg Adjustable	Rope	0.75 – 1.8m	K4 Karabiner	H3 Scaffold Hook	1878g
<b>3068A K4</b>	Twin Leg Adjustable	Rope	0.75 – 1.8m	K4 Karabiner	H3 Scaffold Hook	2535g
<b>3068A K4 K4</b>	Twin Leg Adjustable	Rope	0.75 – 1.8m	K4 Karabiner	K4 Karabiner	2535g



---

## 01.2 LANYARDS

---

ERGOplus  
**ERGO**  
Other Lanyards  
HotWorks

---



---

### ERGO Heavy Duty Lanyards

3053 HD



3053 BH HD



## 01.2 LANYARDS

ERGOplus

**ERGO**

Other Lanyards

HotWorks



## ERGO Heavy Duty Lanyards

Code	Type	Material	Length	Fitting at Shock Absorber	Fitting at Free End(s)	Weight
<b>3053 HD</b>	Single Leg 140kg	Webbing	1.8m	H1HD Trip Resistant Snap Hook	H1HD Trip Resistant Snap Hook	1240g
<b>3055 HD</b>	Single Leg 140kg	Webbing	1.8m	H1HD Trip Resistant Snap Hook	H3HD Scaffold Hook	1605g
<b>3058 HD</b>	Twin Leg 140kg	Webbing	1.8m	H1HD Trip Resistant Snap Hook	H3HD Scaffold Hook	2720g
<b>3053 BH HD</b>	Single Leg Back Hook 140kg	Webbing	1.8m	H1HD Trip Resistant Snap Hook	N-3050 Back Hook	1365g
<b>3053E HD</b>	Single Leg 140kg	Elastic Webbing	1.8m	H1HD Trip Resistant Snap Hook	H1HD Trip Resistant Snap Hook	1265g
<b>3055E HD</b>	Single Leg 140kg	Elastic Webbing	1.8m	H1HD Trip Resistant Snap Hook	H3HD Scaffold Hook	1630g
<b>3058E HD</b>	Twin Leg 140kg	Elastic Webbing	1.8m	H1HD Trip Resistant Snap Hook	H3HD Scaffold Hook	2770g

---

## 01.2 LANYARDS

---

ERGOplus

ERGO

**Other Lanyards**

HotWorks

---



---

### Other Lanyards

3053 WW K4



3072



3055 ENT





## 01.2 LANYARDS

ERGOplus

ERGO

**Other Lanyards**

HotWorks



### Other Lanyards

Code	Type	Material	Length	Fitting at Shock Absorber	Fitting at Free End(s)	Weight
<b>3053 WW K4</b>	Single Leg	Webbing	1.8m	K4 Stainless Karabiner	K4 Stainless Karabiner	1040g
<b>3055 ENT</b>	Black Single Leg	Webbing	1.8m	H1 Snap Hook Black	H3 Scaffold Hook Black	1320g
<b>3051</b>	Shock Absorber	Webbing	0.45m	K2 Karabiner	K2 Karabiner	720g
<b>3058WR</b>	Twin Leg	Wire Rope	1.8m	H1 Snap Hook	H3 Scaffold Hook	2073g
<b>3201</b>	Retracting	Webbing	2.25m	K4 Karabiner	K4 Karabiner	1365g
<b>3072 K4</b>	Single Leg	Wire Rope	1.8m	K4 Karabiner	K4 Karabiner	1280g
<b>3073 K4</b>	Single Leg	Wire Rope	1.8m	K4 Karabiner	H3 Scaffold Hook	1415g
<b>3072</b>	Single Leg	Wire Rope	1.8m	H1 Snap Hook	H1 Snap Hook	1390g
<b>3073</b>	Single Leg	Wire Rope	1.8m	H1 Snap Hook	H3 Scaffold Hook	1470g

---

## 01.2 LANYARDS

---

ERGOplus  
ERGO  
Other Lanyards  
**HotWorks**

---



---

## ERGO HotWorks Lanyards

ERGO HotWorks energy absorbing lanyards are designed to protect workers in heat affected environments such as welding and grinding. Utilising tough Heracron/Meta Aramid webbing and Indura ultrasoft energy absorber covers, these lanyards outperform and outlast standard polyester lanyards, which would otherwise be condemned due to burns and spatter damage.

All SpanSet lanyards feature back up straps should the tear web be fully deployed, and all are certified to AS/NZS 1891.1 2007.

With heavy duty, alloy steel, corrosion resistant components, they offer outstanding safety and value to this range.

### Standard Features



---

## 01.2 LANYARDS

---

ERGOplus  
ERGO  
Other Lanyards  
**HotWorks**

---



### 1 Heavy duty alloy steel fittings

Robust and lightweight, offers genuine user acceptance and confidence with corrosion resistance, high quality feel, and smooth function.

### 2 High tensile contrasted stitching

The high tensile computerised sew pattern give repeatable uniformity compared to manual sew patterns. The contrasting colour makes inspection easier.

### 3 Tear web energy absorber

Limits the forces to under 6kN should a fall occur as per Australian/New Zealand standards.

### 4 Indura Ultrasoft energy absorber covers

Protect the shock pack from heat damage but still removable for Inspection as per standard lanyards.

### 5 Stowage loops on all twin lanyards

The need for an operator to avoid connecting an unused leg of a twin lanyard is critical. To avoid this, each SpanSet twin leg lanyard has clearly marked stowage points for unused lanyard legs. They are also rated in case of misuse.

### 6 Heracron/Meta Aramid webbing

High tenacity aramid fibre webbing for heat, abrasion and UV resistance.

---

## ERGO HotWorks Lanyards





---

## 01.2 LANYARDS

---

ERGOplus  
ERGO  
Other Lanyards  
**HotWorks**

---



---

### HotWorks Lanyards

3053 HotWorks



3055 HotWorks



3058 HotWorks



---

## 01.2 LANYARDS

---

ERGOplus  
ERGO  
Other Lanyards  
**HotWorks**

---



---

### HotWorks Lanyards

Code	Type	Material	Length	Fitting at Shock Absorber	Fitting at Free End(s)	Weight
<b>3053 HotWorks</b>	Single Leg	Heracron/Meta Aramid	1.8m	H1 Snap Hook	H1 Snap Hook	1125g
<b>3055 HotWorks</b>	Single Leg	Heracron/Meta Aramid	1.8m	H1 Snap Hook	H3 Scaffold Hook	1315g
<b>3058 HotWorks</b>	Twin Leg	Heracron/Meta Aramid	1.8m	H1 Snap Hook	H3 Scaffold Hooks	2085g

# 01.3





# SpanSet®

---

## Inertia Reels

---

Saverline Fall Arrest Blocks	88
LW Series Inertia Reels	90
Retracting Lanyard	91

---

## 01.3 INERTIA REELS

### Saverline Fall Arrest Blocks

LW Series Inertia Reels  
Retracting Lanyard



### Saverline Fall Arrest Blocks

These robust yet lightweight inertia reels all feature internal braking mechanism along with swivel upper attachment eyes. The webbing lifelines are made from super strength Technora®

for greater abrasion and cut resistance.  
Note: All of these three units are serviceable, however it is generally not cost effective to do so. All units come with fall indicators.

Code	Length	Lifeline	Casing	Cable Connector	Weight (with hardware)	Field Serviceable	Size L x W x D mm
<b>SVLB-2A</b>	2m	Technora webbing	Aluminium	Triple action karabiner	2kg	No – Visual inspection only	460 x 90 x 70 (including karabiners)
<b>SVLB-3A</b>	3m	Technora webbing	Aluminium	Triple action karabiner	1.4	No – Visual inspection only	470 x 110 x 80 (including karabiners)
<b>SVLB-6</b>	6m	Galvanised cable	UV stabilised nylon	Triple action karabiner	3.4	No – Visual inspection only	680 x 155 x 90 (including karabiners)



SVLB-2A



SVLB-3A



SVLB-6

## 01.3 INERTIA REELS

### Saverline Fall Arrest Blocks

LW Series Inertia Reels  
Retracting Lanyard



### Saverline Fall Arrest Blocks

The SpanSet Saverline range of fall arrest blocks have been designed for your safety when working at height. They are modern, compact and durable and have a unique braking system that locks by acceleration, not just speed. This ensures the device pays out freely but

locks on rapidly to minimise free fall and impact loads on both the anchorage and the body. Their lightweight chassis, PC ABS housing and galvanised steel cable contribute to their outstanding strength and performance. All units have fall indicators.

Code	Length	Lifeline	Casing	Cable Connector	Weight (with hardware)	Field Serviceable	Size L x W x D mm
<b>SVLB-10</b>	10m	Galvanised cable	ABS plastic	Triple action swivel karabiner	4.1kg	No – Visual inspection only	244 x 183 x 144
<b>SVLB-18</b>	18m	Galvanised cable	ABS plastic	Triple action swivel karabiner	6.5kg	No – Visual inspection only	300 x 226 x 144
<b>SVLB-30</b>	30m	Galvanised cable	ABS plastic	Triple action swivel karabiner	12kg	No – Visual inspection only	688 x 281 x 207
<b>SVLB-40</b>	40m	Galvanised cable	ABS plastic	Triple action swivel karabiner	12.0kg	No – Visual inspection only	688 x 281 x 207



SVLB-10 and SVLB-18

SVLB-30 and SVLB-40



## 01.3 INERTIA REELS

Saverline Fall Arrest Blocks

### LW Series Inertia Reels

Retracting Lanyard



## LW Series Inertia Reels

Super robust for the most extreme environments these sealed units can be serviced in the field with minimal training. IP56 certified.

Code	Length	Lifeline	Casing	Connector	Weight	Field Service-able	Size L x W x D mm
<b>LW62810</b>	9m	5mm Stainless Steel Cable	Aluminium/ Stainless Steel	Swivel Stainless Steel Karabiner	9.5kg	Yes	240 x 240 x 180
<b>LW62816</b>	15m	5mm Stainless Steel Cable	Aluminium/ Stainless Steel	Swivel Stainless Steel Karabiner	12.0kg	Yes	280 x 280 x 200
<b>LW62826</b>	25m	5mm Stainless Steel Cable	Aluminium/ Stainless Steel	Swivel Stainless Steel Karabiner	20.0kg	Yes	330 x 330 x 200
<b>LW62841</b>	40m	5mm Stainless Steel Cable	Aluminium/ Stainless Steel	Swivel Stainless Steel Karabiner	26.0kg	Yes	380 x 380 x 215

Latchways 15m Sealed



Latchways 15m Sealed



**01.3 INERTIA REELS**

Saverline Fall Arrest Blocks  
 LW Series Inertia Reels  
**Retracting Lanyard**



**Retracting Lanyard**

A lightweight 2.5m retracting lanyard which is ideal for many light duty applications such as order pickers, EWPs, static lines etc. Comes complete with triple action karabiners and an integral energy absorber.

Code	Length	Lifeline	Casing	Connector	Weight	Field Service-able	Size L x W x D mm
<b>3201</b>	2.5m	50mm Webbing	Steel/Plastic	Triple Action Karabiners	1.2kg	No	240 x 110 x 75



# 01.4







**SpanSet<sup>®</sup>**

---

## Rescue and Evacuation

---

Rescue Solutions	94
Gotcha™ Original Rescue Kit	96
Gotcha™ CRD MP Rescue Kit	98
Gotcha™ Shark Rescue Kit	99
Gotcha™ Pole Top Rescue Kit	100
Gotcha™ 4000 Hauling Kit	101
Gotcha™ TRK Tower Rescue Kit	102
Red Pro Kit	103
Gotcha™ CRD	104

---



## 01.4 RESCUE AND EVACUATION

### Rescue Solutions

Gotcha™ Original Rescue Kit  
 Gotcha™ CRD MP Rescue Kit  
 Gotcha™ Shark Rescue Kit  
 Gotcha™ Pole Top Rescue Kit  
 Gotcha™ 4000 Hauling Kit  
 Gotcha™ TRK Tower Rescue Kit  
 Red Pro Rescue Kit  
 Gotcha™ CRD



## Rescue Solutions

### Industry Sectors That Require Rescue and Evacuation



Oil and Gas



Telecommunications



Wind Energy



Steel Work



Maintenance



Scaffolding



Tower Crane Access



Rope Access



Construction



Roof Work



Elevated Work Platforms / Hire Industry



Electrical



Pallet Racking

### Why SpanSet can help you find a solution

If you have selected a method of working that could result in a worker being suspended in a harness, for example fall arrest, or work positioning techniques, then you must consider the rescue implications.

Rescue for personnel suspended at height is an issue that needs addressing for workers, whether they are at 2m or 200m. Traditionally a great deal of emphasis has been placed on this area by those working in extreme environments and quite rightly so. It also applies however to areas that appear more straightforward, but in these areas it is seldom addressed.

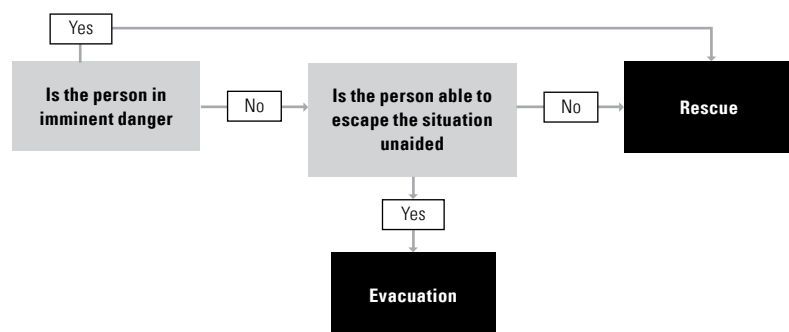
Unconsciousness or death can occur to a suspended casualty even though they may not be injured after their initial fall. This is due to a decrease in the effective circulation of oxygenated blood around the body caused by a combination of factors, such as body position, compression by the harness and a lack of muscle pumping of venous blood.

If the worker is able to move, or relieve the pressure points, then the side effects can be dramatically reduced. However, in the case of an unconscious worker the side effects continue unchecked and rescue is the only option. The time it takes for this condition to affect a person can vary greatly, so having an effective solution at hand for a speedy resolution is essential.

There are several approaches to rescue provision, 1st Response Rescue, Emergency Response Teams and the Emergency Services, each approach having its own merits and disadvantages. The rescue equipment can also take many different forms all with different levels of risk, training requirements, aptitude and commitment. It is therefore important to identify the solution that is right for your application. In order to do this you must consider all the variables such as the equipment they are using, where they are using it and the capability of the users.

The Gotcha™ Rescue Range has been designed to provide simple, pre-assembled solutions for a variety of applications.

Another aspect of emergency planning that can be confused with Rescue is Evacuation.



## Choosing the right rescue solution for your workers

### 1st Response Rescue

- + Available as an on-site rescue solution
- + Immediate response
- + Often application specific
- + Can be carried out safely by a fellow worker or supported by the Emergency Services
- Requires a commitment from fellow workers
- Workers require training and refresher opportunities for it to be effective

This is a great solution for short term tasks or for contractors who need to provide a self contained solution for work at height.

### Emergency Response Teams

- + Available as an on-site rescue solution
- + Fast response
- + Should cover all issues on the specific site
- + Carried out safely by staff selected and trained for the purposes identified
- + Able to work alongside the Emergency Services
- Requires a commitment from the site to set up a team and maintain its currency
- Requires constant appraisal to ensure new work tasks can be covered

This can be an expensive option, however larger sites may prefer this option as the team are able to cover many different work areas or tasks.

### Emergency Services

- + Equipped to cope with a wide range of situations
- + Professional personnel
- + Skills and knowledge regularly refreshed
- Should not be considered as a first response solution for work at height
- Availability cannot be controlled by the site
- Response times will vary depending upon external factors
- Site specific issues may only be possible with consultation

The Emergency Services provide an excellent service, but are only able to address issues that they are aware of and trained to perform. This is an option that many workers rely upon without actually checking that the service is capable of meeting their expectations.

#### 1 Rescuer. What is required:

- They must address their own safety first
- They must be able to act calmly and effectively
- They must have regular practice in the techniques for rescue
- They should reassure the casualty

#### 2 Equipment. What is required:

- It must recover the casualty to a point of safety with minimal risk to the casualty or rescuer
- It must be simple to operate
- It must be designed for the job it is being asked to perform

#### 3 Casualty. What we know:

- They are suspended from an anchor point
- They are wearing a full body harness
- They are at risk from the effects of suspension
- Whilst suspended it is virtually impossible to provide even basic first aid





## 01.4 RESCUE AND EVACUATION

Rescue Solutions

### Gotcha™ Original Rescue Kit

Gotcha™ CRD MP Rescue Kit

Gotcha™ Shark Rescue Kit

Gotcha™ Pole Top Rescue Kit

Gotcha™ 4000 Hauling Kit

Gotcha™ TRK Tower Rescue Kit

Red Pro Rescue Kit

Gotcha™ CRD



## Gotcha™ Original Rescue Kit

The Gotcha™ Original was the first pre-assembled remote rescue kit. Designed for rescuing a suspended casualty from fall arrest lanyards, rope safety lines and fall arrest blocks, all possible from a point of safety.

Casualties can either be raised or lowered to the nearest point of safety, with casualties initially raised to release their original attachment preventing the need for cutting.

The kit comes complete with an anchor sling capable of attaching to a wide range of structures and all terminations are sewn for security.

The kit is adaptable for different heights of anchor point, colour coded for simplicity and includes an extension pole for remote attachment. Included is a rope grab for rapid rescue from rope safety lines or fall arrest blocks.



Codes	Capacity in High Anchor Mode	Capacity in Low Anchor Mode	Weight of Kit
<b>Gotcha-KIT-0 (50)</b>	Up to 17m	Up to 13m	7kg
<b>Gotcha-KIT-75</b>	Up to 25m	Up to 19m	9kg
<b>Gotcha-KIT-100</b>	Up to 34m	Up to 26m	11kg
<b>Gotcha-KIT-150</b>	Up to 51m	Up to 39m	15kg
<b>Gotcha-KIT-200</b>	Up to 68m	Up to 52m	19kg

---

## 01.4 RESCUE AND EVACUATION

---

Rescue Solutions

### Gotcha™ Original Rescue Kit

Gotcha™ CRD MP Rescue Kit

Gotcha™ Shark Rescue Kit

Gotcha™ Pole Top Rescue Kit

Gotcha™ 4000 Hauling Kit

Gotcha™ TRK Tower Rescue Kit

Red Pro Rescue Kit

Gotcha™ CRD

---



---

## Gotcha™ Original Rescue Kit

**The Gotcha™ has enormous versatility and can be used:**

- For rescue from towers
- For rescue from ladders
- As a hauling kit with a litter or stretcher
- With an overhead anchorage
- With a foot level anchorage
- For rescue from a fall arrest lanyard
- For rescue from a rope safety line
- For rescue from inertia reels.

**Kit Contains:**

- Upper and lower pulleys
- Gotcha™ Frog
- Attachment pole
- Rope controller
- Australian Standards rescue rope
- Rope grab (for inertia reels)
- Attachment sling
- Karabiners
- Back pack gear bag.

**Gotcha™ Kit Optional Extra:**

- H3 scaffold pole connection.

Gotcha™ Frog



Rope Grab



Australian Standards Rescue Rope



## 01.4 RESCUE AND EVACUATION

Rescue Solutions

Gotcha™ Original Rescue Kit

**Gotcha™ CRD MP Rescue Kit**

Gotcha™ Shark Rescue Kit

Gotcha™ Pole Top Rescue Kit

Gotcha™ 4000 Hauling Kit

Gotcha™ TRK Tower Rescue Kit

Red Pro Rescue Kit

Gotcha™ CRD



### Gotcha™ CRD MP Rescue Kit

A constant rate 100m multi purpose descent device suitable for rescue and evacuation with remote attachment frog and pole. For operators who require evacuation and Gotcha™ post fall rescue in one kit.

#### Suitable for Evacuation and Rescue from

High structures where constant rate lowering and minimal user input are required.

#### Suitable for Rescue from

Vertical situations where you can access the casualty with the Gotcha™ pole and frog.

#### Kit Contains

- Gotcha™ Frog
- Attachment pole
- Rope descent and rescue controller
- Kernmantle rope
- Attachment sling
- Karabiners
- Back pack gear bag.

Codes	Height Capacity	Raise and Lower Capability	Weight of Kit
<b>Gotcha CRD MP 50</b>	50m	Yes	7kg
<b>Gotcha CRD MP 75</b>	75m	Yes	9kg
<b>Gotcha CRD MP 100</b>	100m	Yes	11kg
<b>Gotcha CRD MP 150</b>	150m	Yes	15kg
<b>Gotcha CRD MP 200</b>	200m	Yes	19kg





---

## 01.4 RESCUE AND EVACUATION

---



Rescue Solutions

Gotcha™ Original Rescue Kit

Gotcha™ CRD MP Rescue Kit

**Gotcha™ Shark Rescue Kit**

Gotcha™ Pole Top Rescue Kit

Gotcha™ 4000 Hauling Kit

Gotcha™ TRK Tower Rescue Kit

Red Pro Rescue Kit

Gotcha™ CRD

---

---

### Gotcha™ Shark Rescue Kit

The Gotcha™ SHARK kit is designed for industrial climbers. The kit comes complete with an anchor sling capable of attaching to a wide range of structures and all terminations are sewn for security.

There is an integral rope protector that can be set at any required location and the descent device allows the user to control their own rate or stop as required.

In use, the rescuer attaches to one attachment, descends to the casualty, attaches them to the second attachment and cuts the casualty free using the unique bladeless cutter.

The kit is designed for loads up to 300kg, so when used for two persons still retains excellent levels of control.

This kit is commonly used by those working on structures such as towers or pylons where safe egress at the base is guaranteed.

#### Kit Contains

- SpanSet RF20 double brake descender
- Rope sever wire cutter
- 100m Australian Standards rescue rope
- Attachment sling
- Karabiners
- Back pack gear bag.

CODE: Gotcha-SHARK-0



## 01.4 RESCUE AND EVACUATION

### Rescue Solutions

Gotcha™ Original Rescue Kit

Gotcha™ CRD MP Rescue Kit

Gotcha™ Shark Rescue Kit

**Gotcha™ Pole Top Rescue Kit**

Gotcha™ 4000 Hauling Kit

Gotcha™ TRK Tower Rescue Kit

Red Pro Rescue Kit

Gotcha™ CRD



## Gotcha™ Pole Top Rescue Kit

A kit for rescuing a casualty suspended by work position and fall arrest equipment when working on a pole.

### Suitable for Rescue from:

Pole straps, flexible line fall arresters and work position lanyards. The casualty is raised to release their original attachment.

### Assisted Rescue

The rescuer accesses the casualty in order to recover them. The Gotcha™ Pole Top Rescue Kit is suitable for use on poles up to 15m high.

### Pre-assembled

No assembly is required by the user.

### Kit Contains

- Rope belay controller
- 15m Australian Standards rescue rope
- Attachment sling
- 2 x karabiners
- Rescue scissors
- Gear bag.

CODE: Gotcha-PTRC-0



---

## 01.4 RESCUE AND EVACUATION

---



Rescue Solutions  
Gotcha™ Original Rescue Kit  
Gotcha™ CRD MP Rescue Kit  
Gotcha™ Shark Rescue Kit  
Gotcha™ Pole Top Rescue Kit  
**Gotcha™ 4000 Hauling Kit**  
Gotcha™ TRK Tower Rescue Kit  
Red Pro Rescue Kit  
Gotcha™ CRD

---

---

### Gotcha™ 4000 Hauling Kit

This rescue/access pulley system with a 4:1 mechanical advantage features a single directional set of pulleys allowing efficient lifting and controlled lowering.

Can be locked off for prolonged suspension, be self operated or by a second person.

#### Kit Contains

- 4000 Rescue pulley system
- 50m of Australian Standards rescue rope
- 2 x karabiners
- 2000kg round sling
- Lay flat gear organiser bag.

CODE: 4000





## 01.4 RESCUE AND EVACUATION

### Rescue Solutions

Gotcha™ Original Rescue Kit

Gotcha™ CRD MP Rescue Kit

Gotcha™ Shark Rescue Kit

Gotcha™ Pole Top Rescue Kit

Gotcha™ 4000 Hauling Kit

**Gotcha™ TRK Tower Rescue Kit**

Red Pro Rescue Kit

Gotcha™ CRD



## Gotcha™ TRK Tower Rescue Kit

The Gotcha™ TRK is a pre-assembled 100m kit that can be used for rescuing personnel from towers, masts and similar structures.

The kit includes enough components for a variety of rescue applications. This kit is commonly used by operators in the telecommunications and electrical industries.

### Kit Contains

- 100m of Australian Standards rescue rope
- Double brake descender
- Micro hauler
- 2 x Black Snake attachment slings
- 4 x K4 karabiners
- 3 x RP012 single pulleys
- Single yoke
- Dual yoke H1Alu
- Back pack lay flat gear bag.

CODE: Gotcha-TRK-0



---

## 01.4 RESCUE AND EVACUATION

---



Rescue Solutions  
Gotcha™ Original Rescue Kit  
Gotcha™ CRD MP Rescue Kit  
Gotcha™ Shark Rescue Kit  
Gotcha™ Pole Top Rescue Kit  
Gotcha™ 4000 Hauling Kit  
Gotcha™ TRK Tower Rescue Kit  
**Red Pro Rescue Kit**  
Gotcha™ CRD

---

---

### Red Pro Rescue Kit

The Red Pro is a pre-assembled 100m kit that can be used for personal evacuation, assisted evacuation or rescue of a casualty from high or remote locations.

The kit comes complete with an anchor slings capable of attaching to a wide range of structures, all terminations are sewn for security, the descent device operates automatically at a constant speed requiring no input from the user and can also be used for raising a casualty if required.

This kit is commonly used by wind energy access technicians and general operators looking for versatility in a kit. The unit comes in a sealed weatherproof bag and a sturdy SKV box.

#### Kit Contains

- Rope descent and rescue controller
- 125m rope
- 3 x attachment slings
- 4 x karabiners
- Edge protector
- Pulley
- Rope grab
- Hard box.

CODE: Gotcha REDPRO-SKV-125



---

## 01.4 RESCUE AND EVACUATION

---

### Rescue Solutions

Gotcha™ Original Rescue Kit

Gotcha™ CRD MP Rescue Kit

Gotcha™ Shark Rescue Kit

Gotcha™ Pole Top Rescue Kit

Gotcha™ 4000 Hauling Kit

Gotcha™ TRK Tower Rescue Kit

Red Pro Rescue Kit

### Gotcha™ CRD

---



---

## Gotcha™ CRD

The Gotcha™ CRD is a pre-assembled 100m kit that can be used for personal evacuation, assisted evacuation of a casualty from high or remote locations.

The kit comes complete with an anchor sling capable of attaching to a wide range of structures, all terminations are sewn for security, and the descent device operates automatically at a constant speed requiring no input from the user.

This kit is commonly used by less experienced workers who occasionally access high level working platforms and require a simple rescue or evacuation solution.

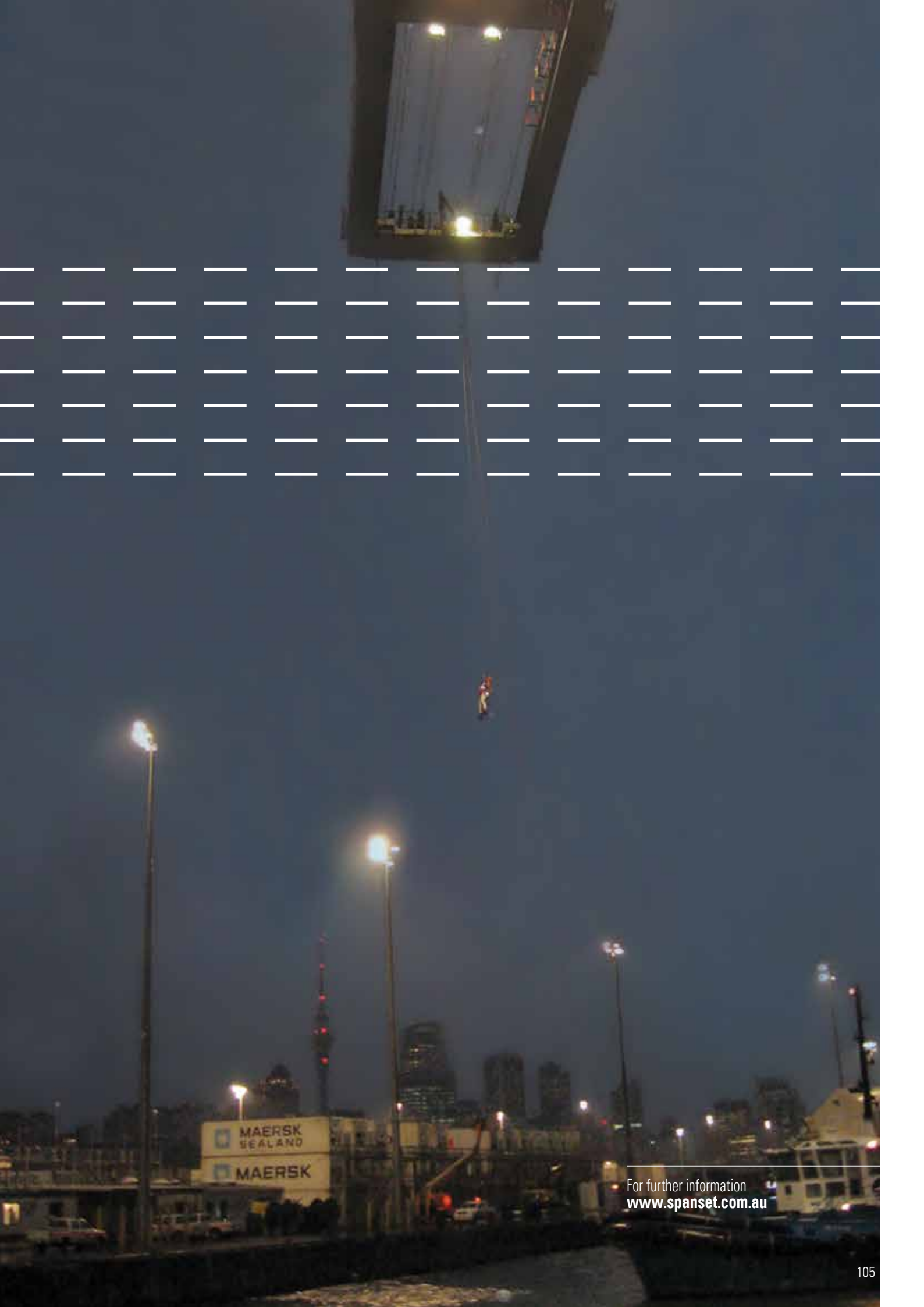
### Kit Contains

- Rope descent and rescue controller
- 100m rope
- Attachment sling
- Karabiners
- Back pack gear bag.

CODE: Gotcha-CRD-0

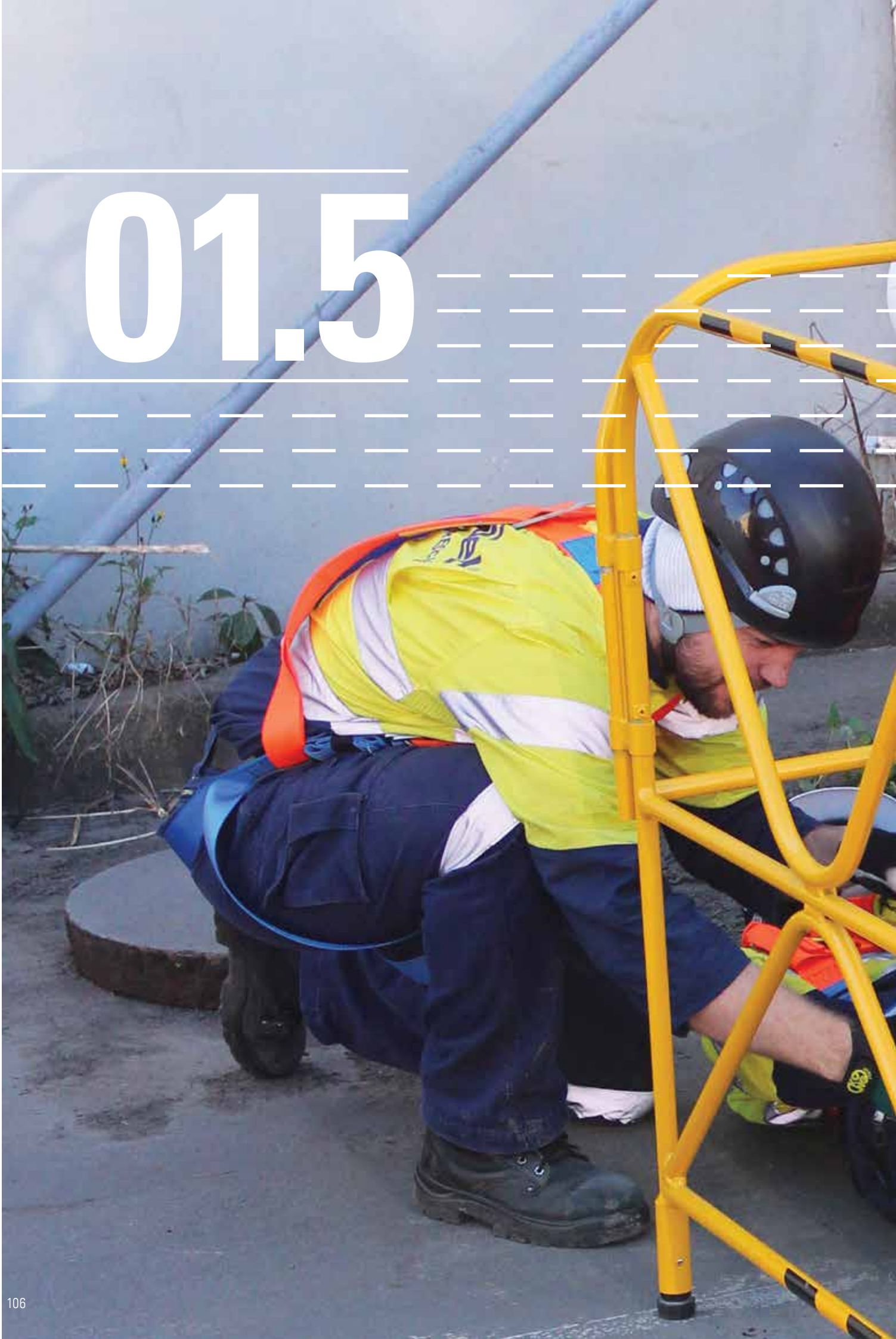






For further information  
[www.spanset.com.au](http://www.spanset.com.au)

# 01.5





## Confined Space Solutions

Davit Systems	105
SpanSet Xtirpa Portable Manhole Guard System	108
SpanSet Xtirpa Tow Bar Hitch Davit System	110
SpanSet Xtirpa 1200mm Tow Bar Hitch Davit System	114
SpanSet Xtirpa H-Base Portable Davit System	116
SRL and Winch Bracket Adapters	117
SpanSet Xtirpa 600mm (24") Fixed Davit System	118
SpanSet Xtirpa 1200mm (48") Fixed Davit System	120
SpanSet Xtirpa 2400mm (96") Fixed Davit System	122
SpanSet Xtirpa Counterweight Systems	124
SpanSet Xtirpa Low Clearance Integrated Mast and Davit Arm	126
SpanSet Xtirpa Short Reach Mast and Davit Arm	126
Manhole Cover Lifter Set	127
Heavy Duty Tripod	128
Personnel Winches	130
Combination Inertia Reel and Winches	131
4000 Pulley System	132
Confined Space Accessories	133



## 01.5 CONFINED SPACE SOLUTIONS

### Davit Systems

Heavy Duty Tripod  
Personnel Winches  
Combination Inertia Reel and Winches  
4000 Pulley System  
Confined Space Accessories



### SpanSet Xtirpa Portable Manhole Guard System

These portable manhole guards have an integrated mast, which in conjunction with the davit arm, transform these into confined space fall protection and retrieval systems. Ultra lightweight and portable with a rating in excess of 16kN, the assembly can be set up in less than 60 seconds.

Our Xtirpa manhole guard systems tick all the boxes of public safety, secondary fall protection, primary fall protection, rescue and retrieval, controlled ingress and egress, manual handling and worker acceptance. They are fully expandable with the extension pieces to suit any size application and are far more stable than a tripod.

#### Manhole Barrier Kit

with davit arm and stabilizer

Code: SPXT3 Xtirpa



Spiked Manhole Guard Feet

Large Rubber Feet for Manhole Guard

SPXTA2101-07 Manhole Guard Extension



SPXT2 Portable Manhole Guard Davit System (SPXT3 with Stabiliser)

**01.5 CONFINED SPACE SOLUTIONS**

**Davit Systems**

- Heavy Duty Tripod
- Personnel Winches
- Combination Inertia Reel and Winches
- 4000 Pulley System
- Confined Space Accessories



**SpanSet Xtirpa Portable Manhole Guard System**

**Portable Manhole Guard**

Code: SPXTIN2108

**Large Manhole Guard**

Code: SPXTIN2324

**Davit Arm**

Code: SPXTIN2210

**Stabiliser**

Code: SPXTA2108-18

**Manhole Guard Extension**

Code: SPXTA2101-07

**Repositioning Wheels**

Code: SPXTIN52

SPXTIN52 Repositioning Wheels

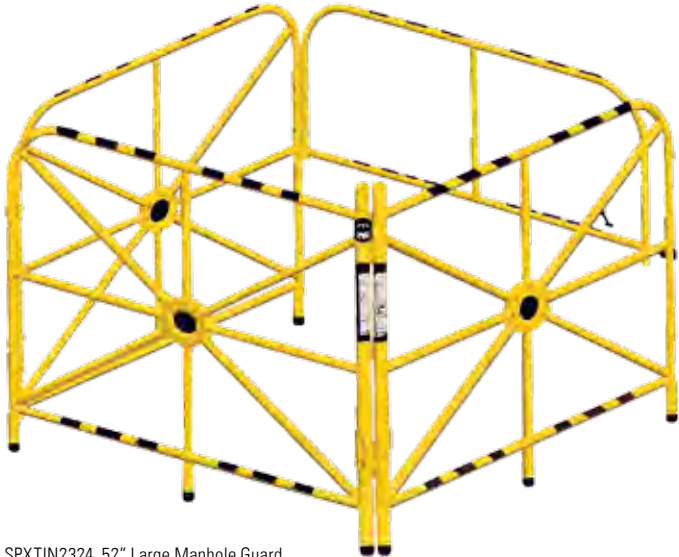
SPXTIN2108 Portable Manhole Guard



SPXTA2108-18 Stabiliser



SPXTIN2324 52" Large Manhole Guard



SPXTIN2210 Davit Arm



---

## 01.5 CONFINED SPACE SOLUTIONS

---

### Davit Systems

Heavy Duty Tripod  
Personnel Winches  
Combination Inertia Reel and Winches  
4000 Pulley System  
Confined Space Accessories

---



---

## SpanSet Xtirpa Tow Bar Hitch Davit System

### For Fall Protection and Retrieval Versatility

The trailer hitch mount system connects to most 50mm square vehicle receiver hitches. This most popular system offers you adjustable screw pads for simple leveling of the system and is far more stable than a tripod.

Again SpanSet is offering you the most versatile system on the market, always using same mast (SPXTIN2003) and same davit arm (SPXTIN2210). It gives you a maximum rating of 16kN and features a range of accessories to complete this valuable workplace asset.

### Xtirpa Tow Bar Hitch Mount System Kit

with mast and davit arm

Code: SPXT6

### Trailer Hitch Mount

CODE: SPXTIN2126

### Xtirpa Davit Arm 16kN

CODE: SPXTIN2210

### Mast for 2210

CODE: SPXTIN2003

### Hitch Mount With Wide Stabiliser

CODE: SPXTIN2204





**01.5 CONFINED SPACE SOLUTIONS**

**Davit Systems**

- Heavy Duty Tripod
- Personnel Winches
- Combination Inertia Reel and Winches
- 4000 Pulley System
- Confined Space Accessories



**SpanSet Xtirpa Tow Bar Hitch Davit System**

SPXTIN2210 Davit Arm



SPXTIN2204 76mm Hitch Mount with 1524mm Stabiliser



SPXTIN2126 Trailer Hitch Mount



## 01.5 CONFINED SPACE SOLUTIONS

### Davit Systems

Heavy Duty Tripod  
Personnel Winches  
Combination Inertia Reel and Winches  
4000 Pulley System  
Confined Space Accessories



## SpanSet Xtirpa Tow Bar Hitch Davit System Accessories

### Anchor Bolt Adapter

for Trailer Hitch Mount  
CODE: SPXTA2126-21

### 90° Extension

for Trailer Hitch Mount  
Code: SPXTIN2126-10

### Straight Extension

for Trailer Hitch Mount  
Code: SPXTA2126-09

### 406mm C Clamp Adapter

for Trailer Hitch Mount  
Code: SPXTIN2126-14

### 597mm C Clamp Adapter

for Trailer Hitch Mount  
Code: SPXTIN2126-33

SPXTA2126-10 90 Degree Extension



SPXTA2126-09 Straight Extension



SPXTA2126-21 Anchor Bolt Adapter



SPXTA2126-14 406mm C Clamp Adapter



SPXTA2126-33 597mm C Clamp Adapter



**01.5 CONFINED SPACE SOLUTIONS**

**Davit Systems**

- Heavy Duty Tripod
- Personnel Winches
- Combination Inertia Reel and Winches
- 4000 Pulley System
- Confined Space Accessories



**SpanSet Xtirpa Tow Bar Hitch Davit System Accessories**

**Universal Swivel Joint**

for Trailer Hitch Mount  
Code: SPXTA2126-07

**Short Mezzanine C Clamp Adapter**

for Trailer Hitch Mount  
Code: SPXTA2126-50

**213mm Universal Wall Adapter Extension**

for Trailer Hitch Mount  
Code: SPXTA2348-03

**415mm Universal Wall Adapter Extension**

for Trailer Hitch Mount  
Code: SPXTA2348-05

**Wall Adapter for Universal Wall Adapter Extensions**

for Trailer Hitch Mount  
Code: SPXTA2348-07

**Mounting Plate For Universal Wall Adapter**

for Trailer Hitch Mount  
Code: SPXTA2348-08 (for use with SPXTIN2348)

SPXTIN2348-08



SPXTA2126-07 Universal Swivel Joint



SPXTA2126-50 Short Mezzanine C Clamp Adapter



SPXTA2348-05 415mm Universal Wall Adapter Extension



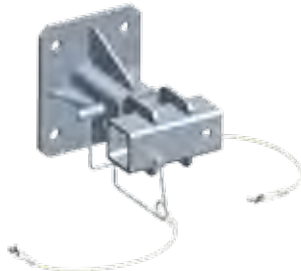
SPXTA2348-07 Wall Adapter for SPXTIN2348-03 and SPXTIN2348-05



SPXTA2348-03 213mm Universal Wall Adapter Extension



SPXTIN2348 Universal Wall Adapter for Hitch Mount (Zinc)





## 01.5 CONFINED SPACE SOLUTIONS

### Davit Systems

Heavy Duty Tripod  
Personnel Winches  
Combination Inertia Reel and Winches  
4000 Pulley System  
Confined Space Accessories



### SpanSet Xtirpa 1200mm Tow Bar Hitch Davit System





### Davit Systems

Heavy Duty Tripod  
 Personnel Winches  
 Combination Inertia Reel and Winches  
 4000 Pulley System  
 Confined Space Accessories

#### SPXTIN2305 Universal T-Base

Working Load Mass with Mast SPXTIN2240 and Davit Arm SPXTIN2237	164kg
Maximum Capacity with Mast SPXTIN2240 and Davit Arm SPXTIN2237	16kN
Hitch Vehicle Minimum Weight	2727kg
Weight	33kg
Extensions	Aluminium
Mast Sleeve	Aluminium
Extension Sliders	Black Delrin
Positioning Levels and Hardware	Zinc Plated Steel
Positioning Pads	Aluminium
Finish	Security Yellow

#### SPXTIN2240 Mast

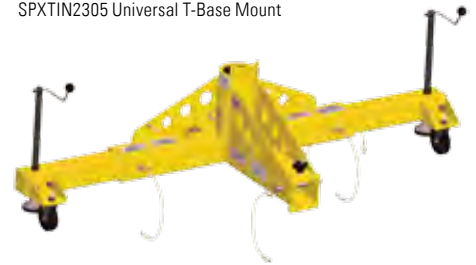
Maximum Working Load with Davit Arm SPXTIN2237	164kg
Maximum Capacity with Davit Arm SPXTIN2237	16kN
Weight	11kg
Mast	Aluminium
Handle	Aluminium
Finish	Security Yellow

#### SPXTIN2237 1200mm Davit Arm

Maximum Working Load with Mast SPXTIN2240	164kg
Maximum Capacity with Mast SPXTIN2240	16kN
Maximum Capacity at Anchor Point	22kN
Weight	16kg
Extension and Guide Tubes	Aluminium
Anchorage Hooks	Stainless Steel
Hardware	Zinc Plated Stainless Steel
Guide Tube Sliders	Ultra High Molecular-weight Polyethylene
Pulley	Black Acetal
Finish	Security Yellow

### SpanSet Xtirpa 1200mm Tow Bar Hitch Davit System

SPXTIN2305 Universal T-Base Mount



SPXTIN2240 Davit Mast



## 01.5 CONFINED SPACE SOLUTIONS

### Davit Systems

Heavy Duty Tripod

Personnel Winches

Combination Inertia Reel and Winches

4000 Pulley System

Confined Space Accessories



## SpanSet Xtirpa H-Base Portable Davit System

The 5 piece hoist system is designed to be used in conjunction with davit arm SPXTIN2210 and mast SPXTIN2003. The portable lower base will adjust to fit most standard confined spaces. It offers a solution for the entry, rescue and positioning of personnel.

The davit arm/mast combination will allow the attendant to pivot the system for easier and safer rescue and offers far more stability than a tripod. Durable and versatile, the system has a capacity of 16kN and it also provides you a 22kN anchor point for standby personnel.

### Xtirpa H-Base Portable Davit System Kit

with mast and davit arm

Code: SPXT5

### H-Base

Code: SPXTIN2118

### 50" Xtirpa Davit Arm 16kN

Code: SPXTIN2210

### Mast for 2210

Code: SPXTIN2003



SPXTIN2210 50" Davit Arm



SPXTIN2118 H-Base



SPXTIN2003 Mast for SPXTIN2210







### Davit Systems

Heavy Duty Tripod  
 Personnel Winches  
 Combination Inertia Reel and Winches  
 4000 Pulley System  
 Confined Space Accessories

### SRL and Winch Bracket Adapters

For those customers who own existing competitors' winches and SRLs we have adapter brackets available to fit the Xtirpa range of davits and our tripods.

Note: All SRL and Winch brackets supplied by SpanSet are compatible with the Xtirpa range without the need for adapters.

SPXTIN2225



SPXTIN2226

Brand and Model	Part No
<b>SpanSet SVLRB15</b>	SVLRB15 Bracket
<b>SpanSet SVLRB-30</b>	SVLRB30 Bracket
<b>SpanSet SVLRB-40</b>	SVLRB40 Bracket
<b>SpanSet SVLWB-20</b>	Winch Adapt Bracket
<b>SpanSet SVLWB-30</b>	Winch Adapt Bracket
<b>SpanSet Heavy Duty Tripod</b>	TRIPOD-HD
<b>Protecta SRL AD515CG</b>	SPXTIN2152 Adapter
<b>Miller SRL MR-100G, MR130SB</b>	SPXTIN2177 Adapter
<b>Miller SRL M52/25</b>	SPXTIN2225 Adapter
<b>Miller SRL LB287</b>	SPXTIN2226 Adapter
<b>Miller Man Handler Winch</b>	SPXTIN2191 Adapter
<b>Ikar SRL 205G-50</b>	SPXTIN2079 Adapter
<b>Ikar SRL 205G-75</b>	SPXTIN2178 Adapter
<b>Ikar SRL 205G-100</b>	SPXTIN2231 Adapter
<b>Sala SRL and Winch</b>	-
<b>MSA Winch 10011744,50</b>	SPXTIN2151 Adapter
<b>North FP6610/33 (purchased prior to 2012)</b>	SPXTIN2215 Adapter
<b>North FP6610/15 (purchased prior to 2012)</b>	SPXTIN2191 Adapter

## 01.5 CONFINED SPACE SOLUTIONS

### Davit Systems

Heavy Duty Tripod  
 Personnel Winches  
 Combination Inertia Reel and Winches  
 4000 Pulley System  
 Confined Space Accessories



### SpanSet Xtirpa 600mm (24") Fixed Davit System

This unique, adjustable davit system was developed to allow workers greater versatility, with the mast adapter permanently fixed to a structure and the davit arm and mast moved around as required. Ensuring easy and safe access into a wide variety of confined spaces this davit is easily positioned from 380mm,

450mm and 600mm. The davit's versatility offers a solution where other conventional systems are impractical.

With a safety factor of 10:1 the davit meets or exceeds CSA, ANSI, OSHA, CSST and CE Standards.

Code	Description	Min Reach	Max Reach	Max Height
<b>SPXT24</b>	600mm Davit, Mast and Base kit	385mm	601mm	2992mm
<b>SPXTIN2210</b>	600mm Davit Arm	-	-	-
<b>SPXTIN2003</b>	Standard Mast	-	-	-
<b>SPXTIN2044</b>	380mm Mast Extension	-	-	3372mm
<b>SPXTIN2109</b>	450mm Mast Extension	-	-	3442mm
<b>SPXTIN2045</b>	600mm Mast Extension	-	-	3592mm
<b>SPXTIN2005</b>	Stainless Steel Floor Adapter	-	-	-



SPXTIN2044 380mm  
 Mast Extension



SPXTIN2109 350mm  
 Mast Extension



SPXTIN2045 600mm  
 Mast Extension

**Davit Systems**

- Heavy Duty Tripod
- Personnel Winches
- Combination Inertia Reel and Winches
- 4000 Pulley System
- Confined Space Accessories



**SpanSet Xtirpa 600mm (24")  
Fixed Davit System**



SPXTIN2005 Floor Adapter Base



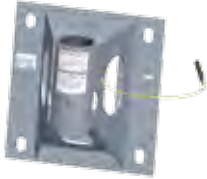
SPXTIN2006 Flush Floor Adapter Base



SPXTIN2007 Concrete Top Wall Bracket



SPXTIN2013 Mural Wall Mount Adapter Base



SPXTIN2124 8 Inch Clearance Mural Wall Adapter



SPXTIN2097 Sleeve Adapter



SPXTIN2021 Wall Adapter Base



SPXTIN2008 Adjustable Wall Adapter



SPXTIN2131 Exterior Corner Wall Mount Sleeve



SPXTIN2133 Inside Corner Wall Mount Sleeve



SPXTIN2105 Central Floor Adapter Base



SPXTIN2087 Wall Mounted Universal Ring Adapter



SPXTIN2085 H-Beam Adapter



SPXTIN2208 Sliding Beam Adapter



SPXTIN2171 Transformer Adapter



SPXTIN2117 Concrete Top Wall Bracket



SPXTIN2161 Warning Post



SPXTIN2072 Adapter Cap



SPXTP2006-6 Adapter Reinforcement Plate



SPXTP2174 Adapter Plate 12 Inch Rod Kit



## 01.5 CONFINED SPACE SOLUTIONS

### Davit Systems

Heavy Duty Tripod  
 Personnel Winches  
 Combination Inertia Reel and Winches  
 4000 Pulley System  
 Confined Space Accessories



### SpanSet Xtirpa 1200mm (48") Fixed Davit System

This unique, adjustable davit system was developed to allow workers greater versatility, with the mast adapter permanently fixed to a structure and the davit arm and mast moved around as required.

Ensuring easy and safe access into a wide variety of confined spaces this davit is easily positioned from 775mm, 915mm and 1200mm. The davit's versatility offers a solution where other conventional systems are impractical.

With a safety factor of 10:1 the davit meets or exceeds CSA, ANSI, OSHA, CSST and CE Standards.



Code	Description	Min Reach	Max Reach	Max Height
<b>SPXT48</b>	1200mm Davit, Mast and Base Kit	774mm	1208mm	2224mm
<b>SPXTIN2237</b>	1200mm Davit Arm	-	-	-
<b>SPXTIN2240</b>	Mast	-	-	-
<b>SPXTIN2238</b>	Stainless Steel Floor Adapter	-	-	-

**Davit Systems**

- Heavy Duty Tripod
- Personnel Winches
- Combination Inertia Reel and Winches
- 4000 Pulley System
- Confined Space Accessories



**1200mm (48") Fixed Davit Mast System Accessories**



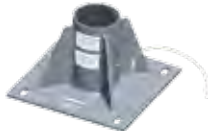
SPXTA2237-06 Removable Winch Adapter



SPXTIN2238 Floor Adapter Base



SPXTIN2253 Mural Wall Adapter Base



SPXTIN2254 Central Floor Adapter Base



SPXTIN2266 Flush Floor Adapter Base



SPXTIN2255 Mast Sleeve Adapter



SPXTIN2272 Adapter Cap 4 Inch Diameter



SPXTIN2273 Adapter Cap with Steel Wire, 4 Inch Diameter



SPXTA2238-03 Cylinder Reducer 4-3 Inches



SPXTIN2271 Rope Access Bracket

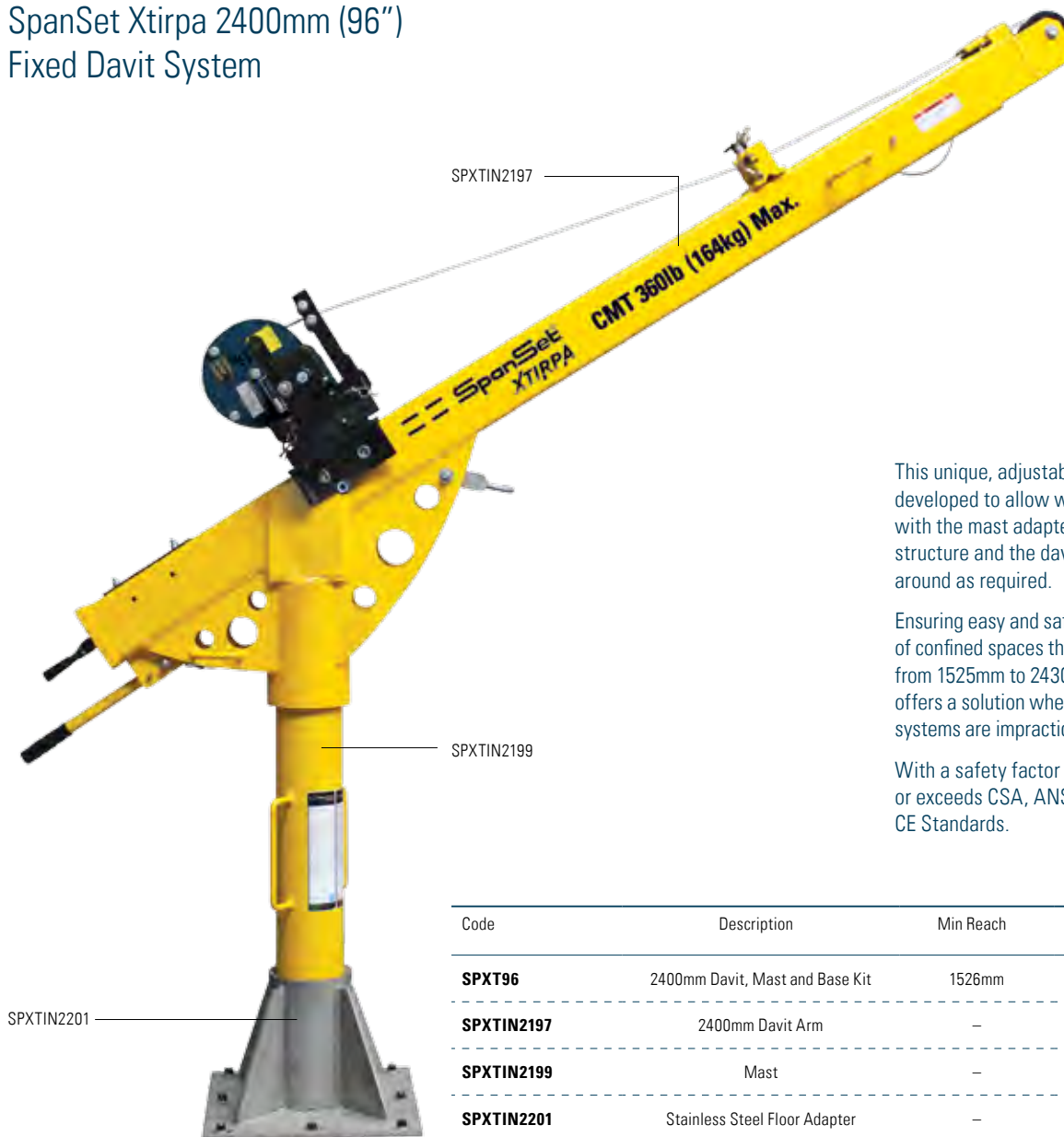
## 01.5 CONFINED SPACE SOLUTIONS

### Davit Systems

Heavy Duty Tripod  
 Personnel Winches  
 Combination Inertia Reel and Winches  
 4000 Pulley System  
 Confined Space Accessories



### SpanSet Xtirpa 2400mm (96") Fixed Davit System



This unique, adjustable davit system was developed to allow workers greater versatility, with the mast adapter permanently fixed to a structure and the davit arm and mast moved around as required.

Ensuring easy and safe access into a wide variety of confined spaces this davit is easily positioned from 1525mm to 2430mm. The davit's versatility offers a solution where other conventional systems are impractical.

With a safety factor of 10:1 the davit meets or exceeds CSA, ANSI, OSHA, CSST and CE Standards.

Code	Description	Min Reach	Max Reach	Max Height
<b>SPXT96</b>	2400mm Davit, Mast and Base Kit	1526mm	2428mm	2786mm
<b>SPXTIN2197</b>	2400mm Davit Arm	-	-	-
<b>SPXTIN2199</b>	Mast	-	-	-
<b>SPXTIN2201</b>	Stainless Steel Floor Adapter	-	-	-





**Davit Systems**

- Heavy Duty Tripod
- Personnel Winches
- Combination Inertia Reel and Winches
- 4000 Pulley System
- Confined Space Accessories

2400mm (96") Fixed Davit Mast System Accessories



SPXTIN2201 2400mm Floor Mount Adapter



SPXTP2201-004 Cylinder Reducer, 5.5-3 Inches



SPXTA2201-04 Cylinder Reducer, 5.5-4 Inches

## 01.5 CONFINED SPACE SOLUTIONS

### Davit Systems

Heavy Duty Tripod  
Personnel Winches  
Combination Inertia Reel and Winches  
4000 Pulley System  
Confined Space Accessories



### SpanSet Xtirpa Counterweight Systems

This counterweight system is designed for multiple confined space access in the same area where the extra reach of the 1200mm davit arm is required. Additionally, it can be used in areas where a fixed base is not possible.

The system consists of a central unit to which a number of optional equipment can be added, including extensions, leg adjustment and anchoring options.

With a weight capacity of 163kg this system can be used in conjunction with a counterbalancing weight rack or a wheel pad assembly when using a vehicle. The davit arm has a 2270kg anchor point.

SPXTA8012 Counterweight System



SPXTIN2240 Davit Mast for 1200mm Davit  
1070mm Height

SPXTIN2313 Davit Mast for 1200mm Davit  
1070mm Height

SPXTIN2237 Extendable Arm for 1200mm Davit

SPXTA2305-16 T-Base Mount  
Extension 1830mm

SPXTA2237-06 Removable Adapter for Positioning Winch

**01.5 CONFINED SPACE SOLUTIONS**

**Davit Systems**

- Heavy Duty Tripod
- Personnel Winches
- Combination Inertia Reel and Winches
- 4000 Pulley System
- Confined Space Accessories



**SpanSet Xtirpa Counterweight Systems**

**Required Components**

SPXTIN2305 Universal T-Base Mount



SPXTA2305-27 Counterweight Base



SPXTP2305-16n 23kg Counterweight Weight Plates



SPXTA2305-23 Counterweight Base Extension Tube



**Optional Accessories**

SPXTA2305-25 Counterweight Adapter for 1830mm Extension



SPXTA2305 Water Counterweight





---

## 01.5 CONFINED SPACE SOLUTIONS

---

### Davit Systems

Heavy Duty Tripod  
Personnel Winches  
Combination Inertia Reel and Winches  
4000 Pulley System  
Confined Space Accessories

---



---

### SpanSet Xtirpa Low Clearance Integrated Mast and Davit Arm

This low clearance davit with an integrated mast and davit arm is designed for use in any of the 610mm (3 inch) adapter bases. Ideal for when a shorter clearance is required.

The unit weighs 7kg and has a weight capacity of 163kg, is 915mm in height and has a 460mm reach.



SPXTIN2295 Low Clearance Mast and Davit (base adapter for application use only).

---

### SpanSet Xtirpa Short Reach Mast and Davit Arm

Low clearance integrated mast and davit arm for use in any of the 610mm (3 inch) adapter bases when a shorter clearance is needed.

The unit weighs 7kg, is 915mm high and has a 229mm reach.



SPXTIN2363 Short Reach Mast and Davit



**Davit Systems**

- Heavy Duty Tripod
- Personnel Winches
- Combination Inertia Reel and Winches
- 4000 Pulley System
- Confined Space Accessories

**Manhole Collars**

**Manhole Collar**

A smart and quick solution for fixed diameter manhole access and provision of rescue egress capability. Lightweight aluminium construction makes handling easy and the unit is also available in other sizes.

Code: SPXTIN2217 (diameter 605-655mm)

SPXTIN2217 Manhole Collar



Assembled Set

**Manhole Cover Lifter Set**

**Manhole Cover Lifter**

This unique concept was designed for easy handling of manhole covers. Light and durable, this model will offer an ergonomic and safe way of lifting the toughest lids without strain. The non-skid foot plate, auto rewind ratchet mechanism and 1335mm of leverage combine to minimise the potential for manual handling injuries.

Code: SPXTIN2071



SPXTIN2071 Manhole Cover Lifter

## 01.5 CONFINED SPACE SOLUTIONS

Davit Systems

### Heavy Duty Tripod

Personnel Winches

Combination Inertia Reel and Winches

4000 Pulley System

Confined Space Accessories



## Heavy Duty Tripod

This aluminium tripod has been designed for tough work conditions and long term use and is particularly suitable for the hire industry. Rectangular, fully adjustable legs and a one piece cast head are designed to resist damage. Integrated twin pulleys and an additional auxiliary anchorage point allow many options and combinations of access, egress and rescue equipment to be specified. Standard extended height is 2.7m.

Code: TRIPOD-HD

The following products can be used on the Heavy Duty Tripod:

- SVLRB-15 15m 3 Way Self Retracting Lifeline
- SVLWB-20 20m Personnel Winch
- SVLWB-30 30m Personnel Winch.
- 4000 Rescue Pulley System.

### Accessories

Tripod Bracket







Davit Systems

**Heavy Duty Tripod**

Personnel Winches

Combination Inertia Reel and Winches

4000 Pulley System

Confined Space Accessories

Heavy Duty Tripod

Dual pulleys allow for simultaneous operation of a winch and 3 way self-retracting lifeline.



Tripod Head

Robust aluminium alloy cast head with two integral pulleys for smooth winching/ lowering operations.

Swivel Aluminium Eye Bolts

Tested to sustain a force of more than 15kN static force.

**Heavy Duty Tripod**

Working Load Limit	350kg
Weight	24kg
Standard Height	1.86m
Extended Height	2.7m
No. of Persons	2
Wheelbase (Footprint) Diameter	2.3m
Legs	Aluminium
Head Wheels	Stainless Steel
Hardware	Zinc Plated Steel
Head Finish	Black Powder Coated

**Heavy Duty Tripod Bracket**

Weight	2.38kg
Body Material	Steel
Finish	Black Powder Coated

## 01.5 CONFINED SPACE SOLUTIONS

Davit Systems

Heavy Duty Tripod

### Personnel Winches

Combination Inertia Reel and Winches

4000 Pulley System

Confined Space Accessories



## Personnel Winches

These robust personnel winches are perfectly suited to the demanding requirements of the confined space environment.

Tough, steel construction, combined with sensible features, allow operators to get on with the task at hand in total confidence.

Attention to detail, such as wire guide rollers and a spring loaded spool retention bar add to the workhorse nature of these winches.

SVLWB-20/SVLWB-30



Code	Description	Weight	Cable Material	Max/Min Work Load	Mechanical Advantage
<b>SVLWB-20</b>	20m personnel winch	14kg	Galvanised Steel	150kg/12kg	22:1
<b>SVLWB-30</b>	30m personnel winch	15.5kg	Galvanised Steel	150kg/12kg	22:1
<b>SVLWB-45</b>	30m personnel winch	18kg	Galvanised Steel	–	–
<b>SVLWB-60</b>	30m personnel winch	19.5kg	Galvanised Steel	–	–

## 01.5 CONFINED SPACE SOLUTIONS



Davit Systems  
 Heavy Duty Tripod  
 Personnel Winches  
**Combination Inertia Reel  
 and Winches**  
 4000 Pulley System  
 Confined Space Accessories

### Combination Inertia Reel and Winches

These self retracting lifelines offer fall protection when entering or exiting confined spaces, and have the additional feature of an easy to deploy emergency winch function. Swivel fall indicator hooks are standard on all SpanSet 3 way devices.

SVLRB-15

SVLRB-30/SVLRB-40



Code	Description	Weight	Lifeline material	Max Load
<b>SVLRB-15</b>	15m 3 way SRL	10.4kg	Galvanised Steel	150kg
<b>SRLRB-30</b>	30m 3 way SRL	12.3kg	Galvanised Steel	136kg
<b>SRLRB-40</b>	40m 3 way SRL	13.1kg	Galvanised Steel	136kg



---

## 01.5 CONFINED SPACE SOLUTIONS

---

Davit Systems

Heavy Duty Tripod

Personnel Winches

**4000 Pulley System**

Confined Space Accessories

---



### 4000 Entry and Egress Pulley System

Our pulley system with a 4:1 mechanical advantage is simple to use and features one way pulleys ie: free wheeling to assist the hauling effort when raising, and locked, adding friction and resistance when lowering.

Safety is further enhanced with a locking, spring loaded, toothed cam. It can be self operated or by a second person. The kit comes complete with a fold out rescue organizer bag, anchor sling karabiners and an ascender/rope grab for even greater ergonomics.

CODE: 4000



---

## 01.5 CONFINED SPACE SOLUTIONS

---

Davit Systems  
Heavy Duty Tripod  
Personnel Winches  
Combination Inertia Reel and Winches  
Rescue Pulley Systems  
**Confined Space Accessories**

---



---

## Confined Space Accessories

### VRS Rescue Stretcher

Soft sided rescue stretcher can be used for vertical or horizontal extraction. Tough plastic combined with the absence of webbing straps underneath mean that the unit can be easily slid over obstacles and terrain without damage or snagging. Comes complete with lifting bridles and all connection points are colour coded for ease of deployment. Rolls up into a small bag for stowage and transport.



### 4006 Spreader Bar

For connection to shoulder loops to give a true vertical orientation when extracting a victim through tight manhole situations. Comes with integrated wrist strap to reduce shoulder width.



### FPV8020 Bosun's Chair

Full width bosun's chair for prolonged suspension. To be strictly used with a fall arrest system.



### HD Tripod Bag

Heavy duty kit bag for ease of transport and storage.



# 01.6



## Anchorage

---

Beam Anchors	136
Horizontal Safety Lines	137
Anchorage Lines	138
Rope Grabs	139
Hard Point Anchors	140
Attachment Slings	141

---

## 01.6 ANCHORAGES

### Beam Anchors

Horizontal Safety Lines

Anchorage Lines

Rope Grabs

Hard Point Anchors

Attachment Slings



## Beam Anchors

These robust vertical and horizontal beam anchors offer secure attachment to a range of I beam and H beam construction steel profiles.

The SpanSet Horizontal Beam Anchor has a spring loaded twist lock adjustment system which eliminates any accidental activation of the adjuster mechanism, a vulnerability that many beam anchors present.

The vertical beam anchor is ideal for the attachment of static lines and temporary systems. It has a simple pin adjustment method supported by an additional fine incremental screw tensioner. The SpanSet Vertical Beam Anchor can be conveniently installed without tools.

BA 004



BA 005



Code	Type	Maximum Flange Width	Minimum Flange Width	Maximum Flange Thickness	Adjustment Type	Rating
<b>BA004</b>	Horizontal	400mm	100mm	28mm	Twist Lock	22kN
<b>BA005</b>	Vertical	350mm	100mm	31mm	Pin/Screw	22kN

---

## 01.6 ANCHORAGES

---

Beam Anchors

### Horizontal Safety Lines

Anchorage Lines

Rope Grabs

Hard Point Anchors

Attachment Slings

---



---

## Horizontal Safety Lines

### 3400 / 3400UK

These webbing safety lines give lateral and versatile continuous anchorage connections.

The standard 3400 connection is made directly to the webbing line via a large hook or karabiner while the 3400UK features connection D rings.

3400



3400UK



---

Code	Length	Rating	Ratchet	Tension Force Indicator
<b>3400</b>	18m	1 Man	Standard	No
<b>3400UK</b>	18m	2 Man	20020 ABS	Yes

---



## 01.6 ANCHORAGES

Beam Anchors

Horizontal Safety Lines

### Anchorage Lines

Rope Grabs

Hard Point Anchors

Attachment Slings



## Anchorage Lines

Supplied with mobile anchorage devices allowing adjustability and movement in horizontal and vertical planes.

3108SA



3109



Code	Attached Shock Absorber	Length	Orientation of use	Rating	Adjuster	Rope Diameter	Rope Type
<b>3108 x 15</b>	No	15m	Horizontal	Fall Arrest	RF1 Type 1	11mm	Kernmantle
<b>3108 x 20</b>	No	20m	Horizontal	Fall Arrest	RF1 Type 1	11mm	Kernmantle
<b>3108 x 25</b>	No	25m	Horizontal	Fall Arrest	RF1 Type 1	11mm	Kernmantle
<b>3108 x 30</b>	No	30m	Horizontal	Fall Arrest	RF1 Type 1	11mm	Kernmantle
<b>3108SA x 15</b>	Yes	15m	Horizontal	Fall Arrest	RF1 Type 1	11mm	Kernmantle
<b>3108SA x 20</b>	Yes	20m	Horizontal	Fall Arrest	RF1 Type 1	11mm	Kernmantle
<b>3108SA x 25</b>	Yes	25m	Horizontal	Fall Arrest	RF1 Type 1	11mm	Kernmantle
<b>3108SA x 30</b>	Yes	30m	Horizontal	Fall Arrest	RF1 Type 1	11mm	Kernmantle
<b>3109 x 15</b>	No	15m	Vertical	Fall Arrest	FP561 Type 1	16mm	3 Strand

## 01.6 ANCHORAGES



Beam Anchors  
 Horizontal Safety Lines  
 Anchorage Lines  
**Rope Grabs**  
 Hard Point Anchors  
 Attachment Slings

## Rope Grabs

RF1



FP561



FP571/8



RFRBW



Code	Type	Orientation of Use	Type of Rope Suitable for Use	Rope Diameter
<b>RF1</b>	Type 1 Manual	Horizontal	Nylon Kernmantle	11mm
<b>FP561</b>	Type 1 Automatic	Vertical	Nylon 3 strand	16mm
<b>FP571/8</b>	Type 1 Automatic	Vertical	Wire Rope	8mm
<b>RFRBW Rocker</b>	Type 1 Automatic	Vertical	Nylon Kernmantle	10.5mm-12.7mm

## 01.6 ANCHORAGES

Beam Anchors  
 Horizontal Safety Lines  
 Anchorage Lines  
 Rope Grabs  
**Hard Point Anchors**  
 Attachment Slings



### Hard Point Anchors

Code	Type	MBS Rating
<b>CT01</b>	Temporary Concrete	18kN
<b>CT02</b>	Temporary Concrete	44kN
<b>CT04</b>	Permanent Steel/Concrete	44kN
<b>RA1</b>	Retro Fit Purlin	22kN
<b>SM1P</b>	Steel Sheet	22kN
<b>TA1</b>	Timber Rafter	22kN

CT01



CT02



CT04



RA1



SM1P



TA1





## 01.6 ANCHORAGES

Beam Anchors  
 Horizontal Safety Lines  
 Anchorage Lines  
 Rope Grabs  
 Hard Point Anchors  
**Attachment Slings**



## Attachment Slings

The SpanSet Black Snake attachment sling utilises our round sling technology and packages it into a low profile super strength attachment strop, with the feel of an endless piece of rope. An outer sheath protects the inner load bearing core and the low profile means no more crowding of snap hooks and karabiners, even in basket configuration.

Black Snake



3501



3502



Code	Type	Orientation of use	MBS Rating	Wear protection	Connection	Length
<b>Black Snake x 0.6</b>	Compact Round Sling	Direct, Choke or Basket	70kN (direct)	Yes	Direct	0.6m
<b>Black Snake x 1.0</b>	Compact Round Sling	Direct, Choke or Basket	70kN (direct)	Yes	Direct	1.0m
<b>Black Snake x 1.5</b>	Compact Round Sling	Direct, Choke or Basket	70kN (direct)	Yes	Direct	1.5m
<b>3501</b>	Webbing	Choke or Basket	22kN (choke)	Yes	to D ring	1.3m
<b>3502</b>	Webbing	Choke or Basket	22kN	No	Direct	1.2m



# 01.7







---

## Accessories and Kits

---

Rescue Accessories	144
General Accessories	160
Connectors	162
Safety Kits	166

---



---

## 01.7 ACCESSORIES AND KITS

---

### Rescue Accessories

General Accessories  
Connectors  
Safety Kits

---



---

## Rescue Accessories

### Vertical Rescue Stretcher

Code: VRS

VRS Vertical Rescue Stretcher



### Micro Hauler Pulley System

Code: Micro

### Single Yoke

Code: Single Yoke

### Dual Yoke

Code: Dual Yoke H1ALU

Single Yoke



Dual Yoke



Micro



**Rescue Accessories**

- General Accessories
  - Connectors
  - Safety Kits
- 



---

**Rescue Accessories**

RF20



RFRBW



ASAP

**SpanSet Descender**

Code: RF20

**SpanSet Rocker Backup Device**

Code: RFRBW

**ASAP with Shock Absorber**

Code: ASAP

**Descender**

Code: ID20

**Left Hand Ascender**

Code: RF5-L

**Right Hand Ascender**

Code: RF5-R

All suitable for 11mm rope.

ID20



RF5-L



RF5-R



## 01.7 ACCESSORIES AND KITS

### Rescue Accessories

General Accessories  
Connectors  
Safety Kits



## Rescue Accessories

### Small Single Pulley

Code: RP012

### Small Double Pulley with Becket

Code: RP030

### Large Single Pulley with Becket

Code: RP065

### Large Double Pulley with Becket

Code: RP067

### Rope Grab with Removable Pin and Cam

Code: RP209

All suitable for 10.5-13mm rope.

RP012



RP030



RP065



RP067



RP209





---

## 01.7 ACCESSORIES AND KITS

---

### Rescue Accessories

General Accessories  
Connectors  
Safety Kits

---



---

## Rescue Accessories

### Large Rigging Plate

Code: RP320

### Medium Rigging Plate

Code: RP310

### Small Rigging Plate

Code: RP300

### Rescue Rope 11mm

Code: RC11 AS

### Rescue Scissors

Code: CCRS

RC11



CCRS



RP320



RP310



RP300



## 01.7 ACCESSORIES AND KITS

Rescue Accessories

### General Accessories

Connectors

Safety Kits



## General Accessories

### Bosun's Chair

Code: FPV8020

### Spreader Bar

Code: 4006

### Tool Strap

Code: TWS

### Suspension Strap

Code: SG238

FPV8020



4006



TWS



SG238



---

## 01.7 ACCESSORIES AND KITS

---

Rescue Accessories

### General Accessories

Connectors

Safety Kits

---



---

## General Accessories

### 100m Rope Bag

Code: R Bag

### Pulley Bag

Code: P Bag

### Small 30m Rope Bag

Code: B Bag

### Kit Bag

Code: K Bag

### Large Gear Bag

Code: ERGO-L

R Bag



P Bag



B Bag



K Bag



ERGO-L





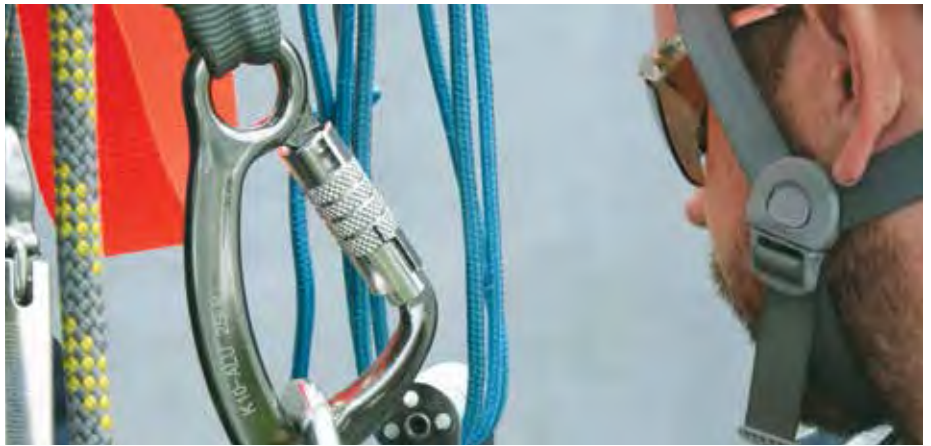
## 01.7 ACCESSORIES AND KITS

Rescue Accessories

General Accessories

**Connectors**

Safety Kits



### Connectors

K1



K2



K4



K4Alu



K6



K9



K10



K10Alu



## 01.7 ACCESSORIES AND KITS

Rescue Accessories  
 General Accessories  
**Connectors**  
 Safety Kits



### Connectors

Code	Description	Gate Type	Gate opening	Strength	Gate strength	Weight	Material
<b>K1</b>	D Karabiner	Screw Gate	27mm	50kN	1kN	190g	Alloy Steel
<b>K2</b>	Oval Karabiner	Screw Gate	15mm	23kN	1kN	157g	Alloy Steel
<b>K4</b>	Equal D Karabiner	Triple Action	24mm	40kN	1kN	183g	Alloy Steel
<b>K4Alu</b>	D Karabiner	Triple Action	28mm	25kN	1kN	100g	Aluminium
<b>K6</b>	D Karabiner	Screw Gate	26mm	22kN	1kN	85g	Aluminium
<b>K9</b>	Scaffold Karabiner	Triple Action	52mm	25kN	1kN	634g	Alloy Steel
<b>K10</b>	Forged Eye Karabiner	Triple Action	20mm	50kN	1kN	257g	Alloy Steel
<b>K10Alu</b>	Fixed Eye Karabiner	Triple Action	20mm	25kN	1kN	120g	Aluminium
<b>N-3050</b>	Safety Back Hook	Double Action	21mm	45kN	≥16kN	454g	Alloy Steel
<b>DELTA8</b>	Delta Quick Link	Screw Gate	14mm	40kN	1kN	86g	Carbon Steel
<b>DELTA10</b>	Delta Quick Link	Screw Gate	16mm	60kN	1kN	152g	Carbon Steel

N-3050



DELTA8



DELTA10



---

## 01.7 ACCESSORIES AND KITS

---

Rescue Accessories

General Accessories

**Connectors**

Safety Kits

---



---

### Connectors

H1



H1HD



H1Alu



H3WBF



H3L



H3



H3HD



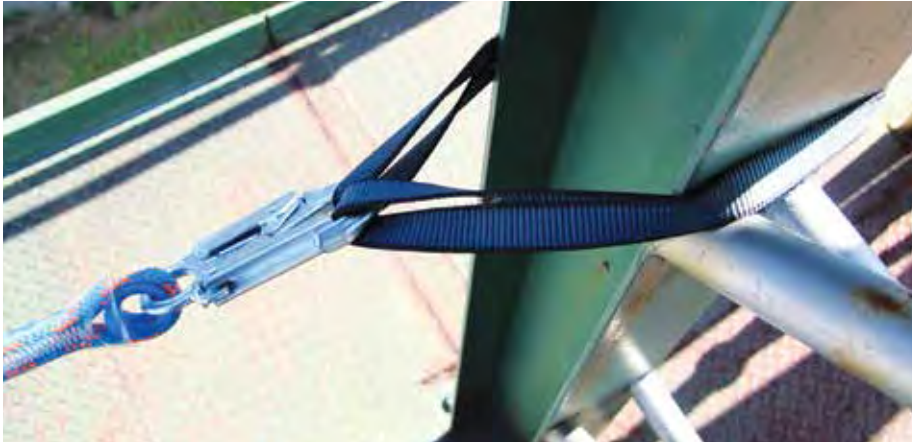
H3BF





## 01.7 ACCESSORIES AND KITS

Rescue Accessories  
 General Accessories  
**Connectors**  
 Safety Kits



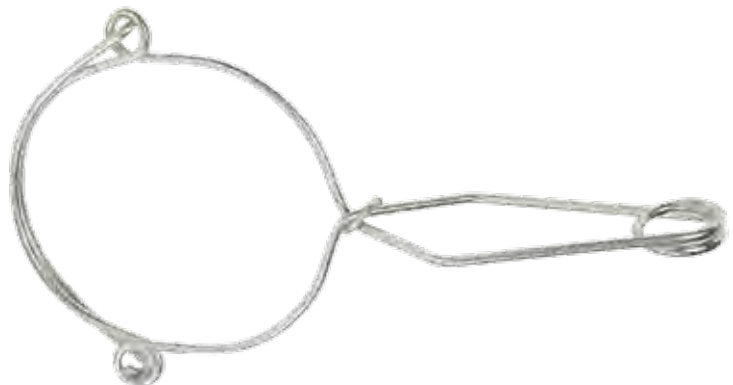
### Connectors

Code	Description	Gate Type	Gate opening	Strength	Gate strength	Weight	Material
<b>H1</b>	Safety Hook	Double Action	21mm	25kN	1kN	280g	Carbon Steel
<b>H1HD</b>	Safety Hook	Double Action	21mm	45kN	16kN	369g	Carbon Steel
<b>H1Alu</b>	Safety Hook	Double Action	23mm	25kN	1kN	200g	Aluminium
<b>H3 WBF</b>	Safety Wire Scaffold Hook	Double Action	86mm	20kN	1kN	488g	Aluminium
<b>H3</b>	Safety Scaffold Hook	Double Action	51mm	25kN	1kN	415g	Alloy Steel
<b>H3HD</b>	Safety Scaffold Hook	Double Action	60mm	25kN	16kN	780g	Alloy Steel
<b>H3 BF</b>	Safety Jumbo Scaffold Hook	Double Action	110mm	25kN	1kN	915g	Aluminium
<b>H3Alu-TA</b>	Safety Scaffold Hook	Triple Action	60mm	25kN	1kN	459g	Aluminium
<b>RF17</b>	Wire Anchor Clamp	Double Action	127mm	23kN	1kN	366g	Stainless Steel

H3Alu



RF17



## 01.7 ACCESSORIES AND KITS

Rescue Accessories

General Accessories

Connectors

**Safety Kits**



### Safety Kits

#### Riggers Kit

Containing 1 x 3400 safety line, 2 x 3.25T safety shackles, 1 x 1100 safety harness, 1 x 3055 lanyard with scaffold hook, 2 x E2000 round slings, backpack style kit bag.

Code: 6000



#### Roofers Kit

Containing 1 x 3108 fall arrest anchorage line and adjuster, 1 x 1104 harness, 1 x K2 karabiner, 1 x 3053 lanyard, 1 x 3501 anchor sling, backpack style kit bag.

Code: 6001



#### Roofers Kit SA

Containing 1 x 3108SA fall arrest anchorage line and adjuster, 1 x 1104 harness, 1 x K2 karabiner, 1 x 3501 anchor sling, backpack style kit bag.

Code: 6001SA



---

## 01.7 ACCESSORIES AND KITS

---

Rescue Accessories  
General Accessories  
Connectors  
**Safety Kits**

---



---

### Safety Kits

#### Basic Kit

Containing 1 x 1100 harness, 1 x 3053 lanyard, 1 x 3501 anchor sling, backpack style kit bag.

Code: 6002



#### Order Picker Kit

Containing 1 x 1100 harness 1 x 3201 retracting lanyard with triple action karabiners, backpack style kit bag.

Code: 60020P



#### All Purpose Kit

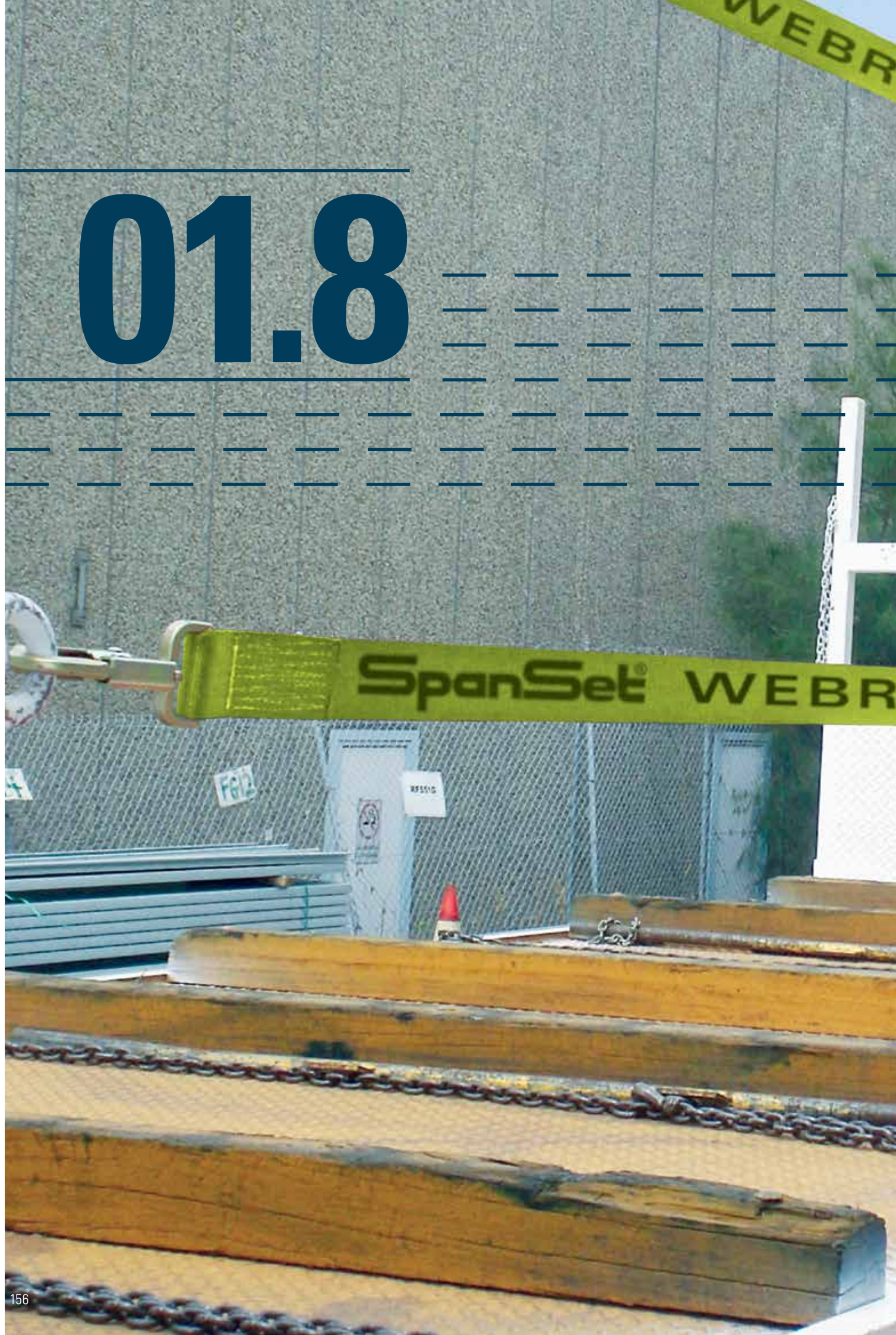
Containing 1 x 1104 harness, 1 x 3055 lanyard with Scaffold Hook, 1 x 3051 shock absorber, 1 x 3501 anchor sling, 1 x 3108 rope restraint line and adjuster, backpack style kit bag.

Code: 6008





# 01.8







# SpanSet®

## Vehicle and Container Fall Protection

WebRail	158
Capcha	160
Stoppa	162

## 01.8 VEHICLE AND CONTAINER FALL PROTECTION

### WebRail

Capcha  
Stoppa



## WebRail

Web Rail by SpanSet is an effective solution to fall protection from the back of heavy vehicles. Featuring our patented Tension Force Indicator and Kevlar® Core webbing, this simple to use system gives significant improvements to current work practices during the loading and unloading/rigging processes.

The Tension Force Indicator gives a known and measurable force on the posts and the Kevlar® core inside the webbing minimises stretch and deflection. The whole system can be removed in minutes to facilitate crane and fork access, or can be left in situ if desired.

The kit comes with four straps complete with twisted double action safety hooks, and spare parts and replacement straps are readily available. Posts are not included with the kit, however engineering specifications are available by contacting SpanSet.

### Tension Force Indicator (TFI)

The TFI is fitted as standard on this system as added security against unintentional over-tensioning, thereby providing optimum tension for effective fall restraint.

Tension Force Indicator (TFI)



### Order Codes

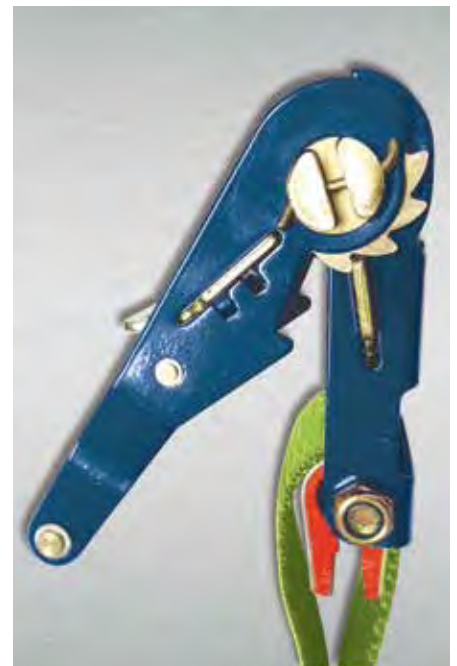
WEBRAIL-KIT-04	Set of 4 x 4m webrail assemblies in kit bag
WEBRAIL-KIT-05	Set of 4 x 5m webrail assemblies in kit bag
WEBRAIL-KIT-06	Set of 4 x 6m webrail assemblies in kit bag
WEBRAIL-KIT-07	Set of 4 x 7m webrail assemblies in kit bag
WEBRAIL-KIT-08	Set of 4 x 8m webrail assemblies in kit bag

Other lengths and replacement straps also available.

Kevlar® core webbing



WebRail ratchet with Tension Force Indicator





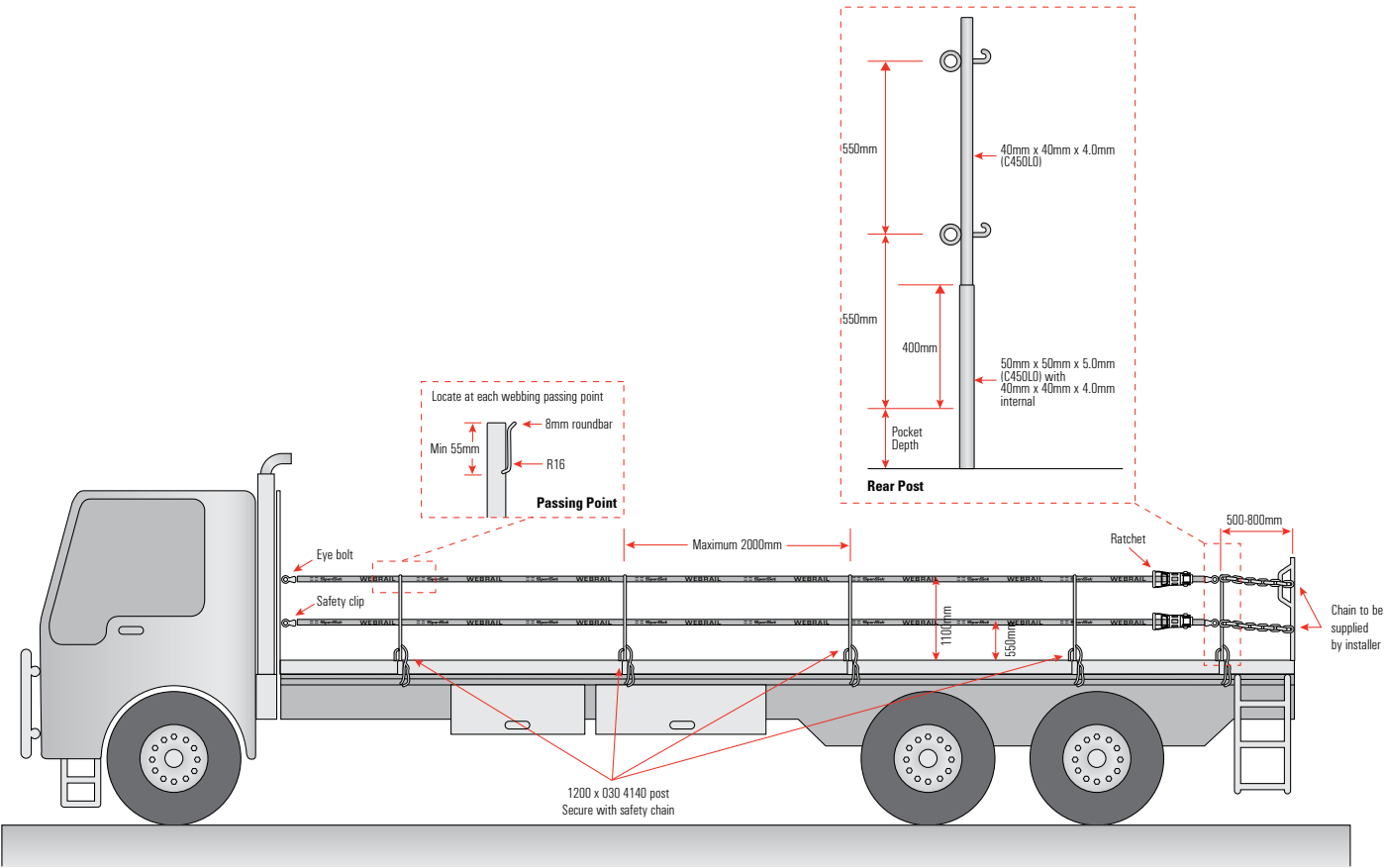
**01.8 VEHICLE AND CONTAINER FALL PROTECTION**

**WebRail**

Capcha  
Stoppa



**WebRail**



WebRail Typical Set Up

---

## 01.8 VEHICLE AND CONTAINER FALL PROTECTION

---

WebRail  
**Capcha**  
Stoppa

---



---

### Capcha

The problems and inherent dangers faced by operators working at height on commercial vehicle trailer beds during loading and unloading operations is fully recognised and well documented as a result of the increasing number of accidents.

The SpanSet Capcha system provides an easy to use solution, helping to reduce the risks posed by falls from vehicle trailers.

The Capcha fall arrest system has been designed for integration with the vehicle body. Capcha allows secure, unrestricted hands free access to the trailer platform. The system can also be used when it is necessary to work at height on the loaded goods.

The Capcha system is ideal for use with most types of curtain-sided and double-deck trailers. The system fits snugly inside the roof of the trailer and does not obstruct loading or unloading operations. It is low maintenance, easy to install and is used in conjunction with the simple to use SpanSet 1100 harness.

The Capcha system can be accessed and easily retrieved from either side of the vehicle. Capcha may be specified as original equipment or can be retrofitted to your fleet. A range of fitting options and installation kits are available to suit most vehicle configurations.

Provides protection from ground level to the trailer and back to the ground.







## 01.8 VEHICLE AND CONTAINER FALL PROTECTION

WebRail  
Capcha  
**Stoppa**



### Stoppa

Stoppa is a personal fall prevention system providing a simple, reliable and cost effective solution to problems associated with access, inspection and maintenance at height on vehicles.

Stoppa starts to protect you from the point when you begin to climb on top of the vehicle - the attachment ring providing a secure handhold as you move from the ladder onto the system. Once attached the Stoppa allows you freedom of access to the top of the vehicle and all the perimeter edges with no risk of falling.

The Stoppa system comes in two parts.

The hardware remains permanently in its

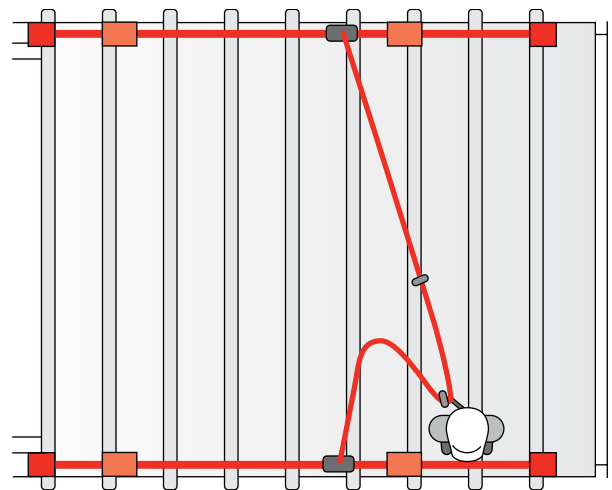
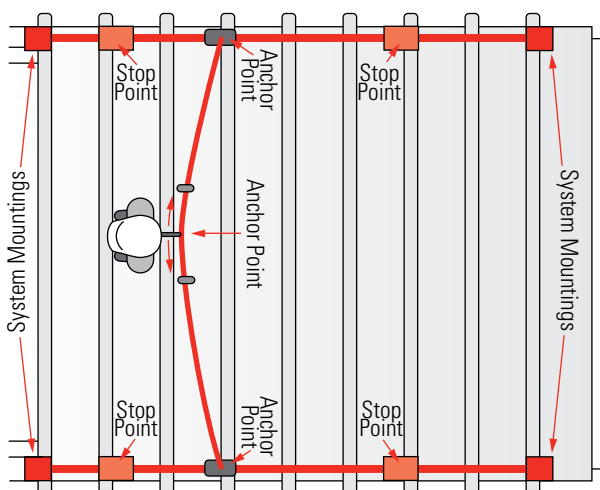
operating position on the vehicle stowed ready for next time. It's low profile installation has little or no effect on the overall vehicle height, minimising the potential for impact damage.

The software consists of a lower body harness with swivel connection that can be worn whilst carrying out other duties or stowed safely in the vehicle when not in use.

Typical applications include: - Refuse Collection Vehicles - Road Tankers - Fire and Rescue Vehicles - Containerised Generators and Chiller Units

We recommend that personnel working at height receive training in safe use of the equipment and

height safety awareness.

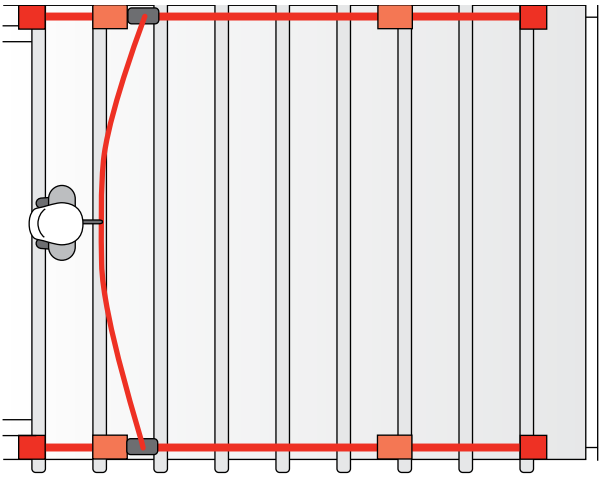
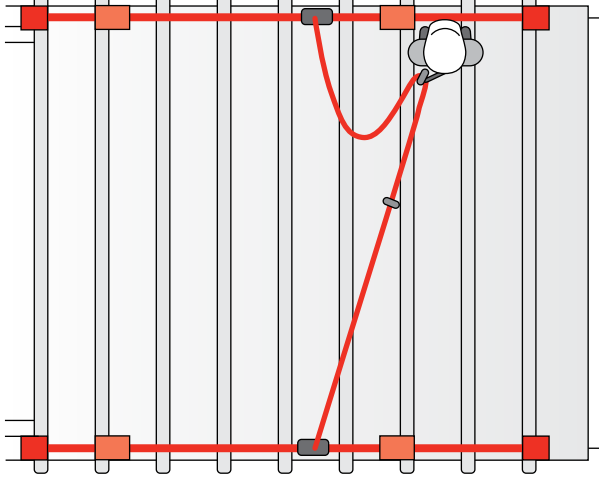
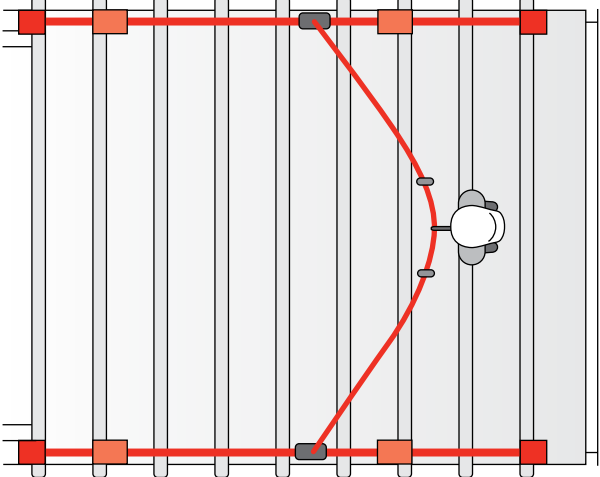


**01.8 VEHICLE AND CONTAINER  
FALL PROTECTION**

WebRail  
Capcha  
**Stoppa**



Stoppa



---

## OTHER PRODUCTS

---



---

## More from SpanSet

**ABS Ratchet Systems**

**Training**

**Lifting Solutions**

**Webdogs**

**Gotcha™ Rescue Kits**

**SpanSet Xtirpa Confined Space  
Entry Equipment**

**Inspector App for iPhone and Android**

**Lashing App for iPhone and Android**

**ABS Ratchet Systems**



**Training**



**Lifting Solutions**



**Webdogs**



**Gotcha™ Rescue Kits**



**SpanSet Xtirpa Confined Space  
Entry Equipment**



**Inspector App for  
iPhone and Android**



**Lashing App for  
iPhone and Android**









---

**[www.spanset.com.au](http://www.spanset.com.au)**

---





---

**Head Office**

SpanSet Australia Ltd  
150 Old Bathurst Road  
(PO Box 164)  
Emu Plains NSW 2750

Phone: 02 4735 3955  
Fax: 02 4735 3630

[sales@spanset.com.au](mailto:sales@spanset.com.au)  
[www.spanset.com.au](http://www.spanset.com.au)

---

**Queensland Office**

Mobile: 0413 737 079

---

**Victoria Office**

Mobile: 0413 737 076

---

**South Australia and Northern Territory Office**

29 Cormack Road  
Wingfield SA 5013

Mobile: 0435 751 557

---

**Western Australia Office**

Unit 1-2, 37 Tulloch Way  
Canning Vale WA 6155

Phone: 08 9455 7404  
Fax: 08 9455 3477

---