

An aerial photograph of a wind turbine under construction. A large white lattice crane with red accents is positioned around the tower. A yellow hoist is suspended from the crane, holding a component near the nacelle. The nacelle has a red and white striped section and the 'AREVA' logo. The background shows the dark sea.

Axzon

Engineering
Lifting Equipment
Technical Services

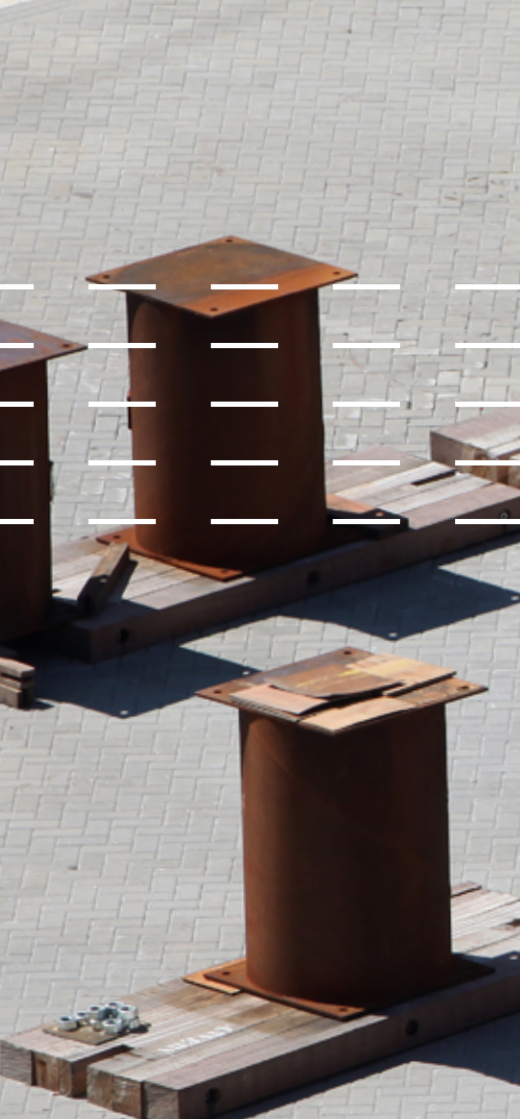
Windenergy

Inhalt

01.1 Lifting Equipment Offshore	8	01.2 Lifting Equipment Onshore	62
Tripod - Turning Spreader Beam	10	Tower Attachment Points	68
Tripod - Spreader Beam for Handling	14	AXZION-VarioJ-Hook	71
Piles - Transport Lorry for Piles	26	AXZION-Pulley	72
Piles - Spreader Beam for Handling	28	Piles - VarioBeam for Handling	72
Rotor Blades - Transport Racks	32		
Rotor Blades - Spreader Beam	38	01.3 Safety Management	80
Piles - Upending Tool	42	600 ton Prooftester	82
Piles - Hinge	50	1.500 ton Prooftester	84
Nacelle - Spreader Beam for Handling	54		
Rotor - Rotor Turning Device	56	Product Data	86



Why our expert know-
ledge translates into
responsibility.



A manufacturer is “responsible for designing and producing products” that are placed on the market bearing its name. As soon as an operator designs and produces its own lifting equipment, it automatically becomes a manufacturer. Time and time again, insufficient attention is paid to the risks and liabilities involved in lifting and moving heavy loads, which sometimes has dramatic consequences for those responsible and those affected.

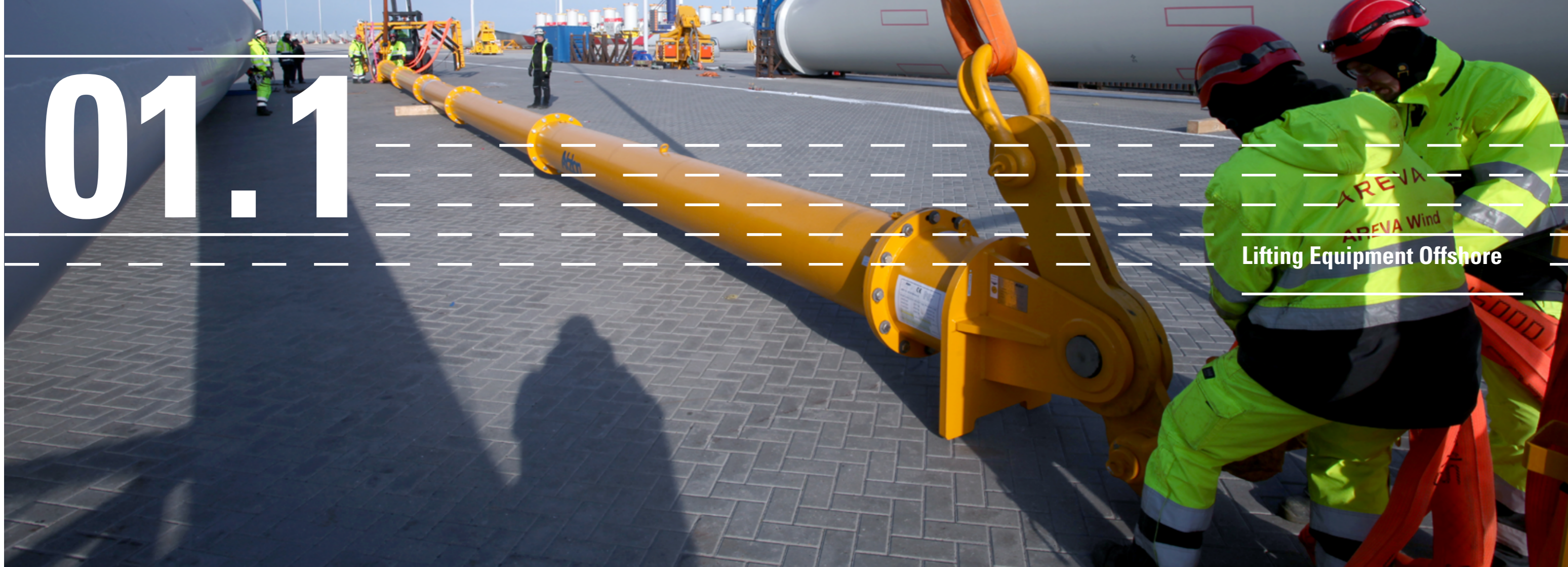
Always buy lifting equipment from a specialist and remember that choosing an unqualified manufacturing company may lead to those making this choice being held personally liable.

With certifications ranging from the manufacturer’s qualification for fusion welding pursuant to DIN EN ISO 3834-2 and the DIN EN 1090-1 manufacturer certification, to an in-house factory production control system for structural components up to EXC3 pursuant to EN 1090-2 and a quality management system certified according to DIN EN ISO 9001, you can rest assured that you are purchasing from a company that complies with all the relevant regulations.



01.1

AREVA
AREVA Wind
Lifting Equipment Offshore



01.1 LIFTING EQUIPMENT OFFSHORE

Tripod

Turning Spreader Beam





01.1 LIFTING EQUIPMENT OFFSHORE

Tripod

Spreader Beam for Handling







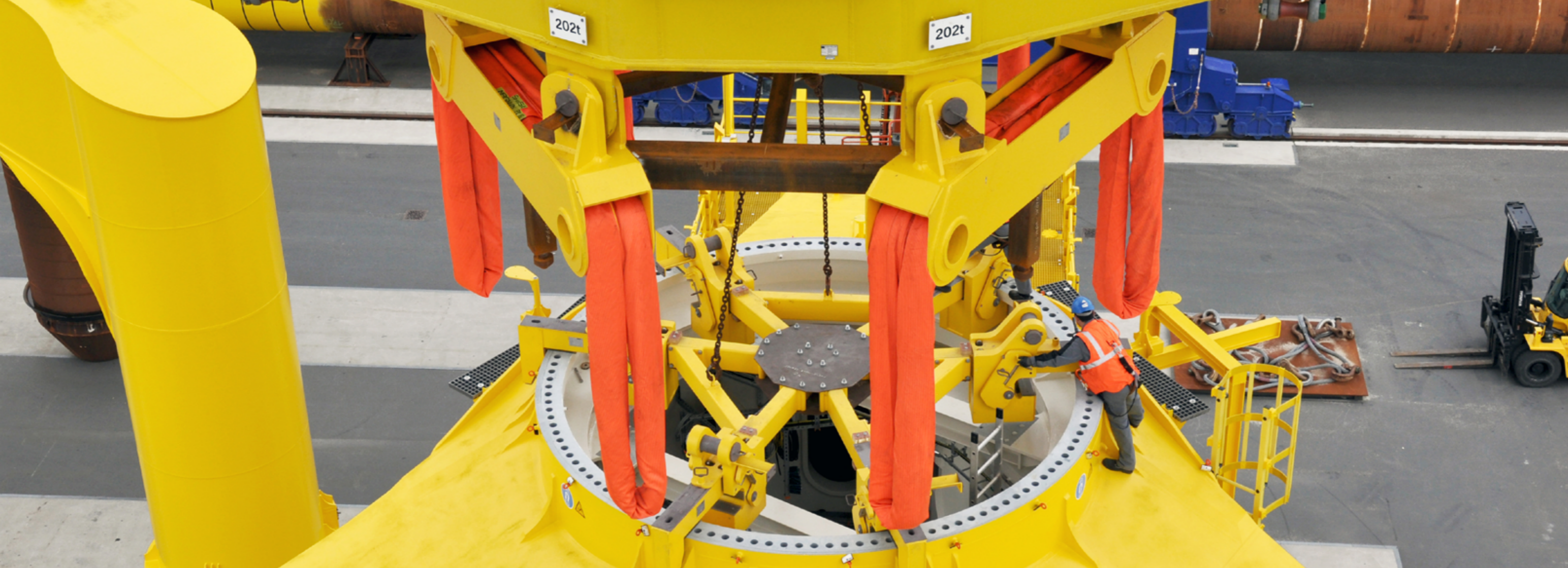
01.1 LIFTING EQUIPMENT OFFSHORE

Tripods

Spreader Beam for Handling







01.1 LIFTING EQUIPMENT OFFSHORE

Piles

Transport Lorry for Piles



01.1 LIFTING EQUIPMENT OFFSHORE

Piles

Spreader Beam for Handling





VICTORIA MATHIAS

OLC
Offshore Logistics Company

OLC
Offshore Logistics Company

TUG

TUG

TUG

TUG

01.1 LIFTING EQUIPMENT OFFSHORE

Rotor Blades

Transport Racks







01.1 LIFTING EQUIPMENT OFFSHORE

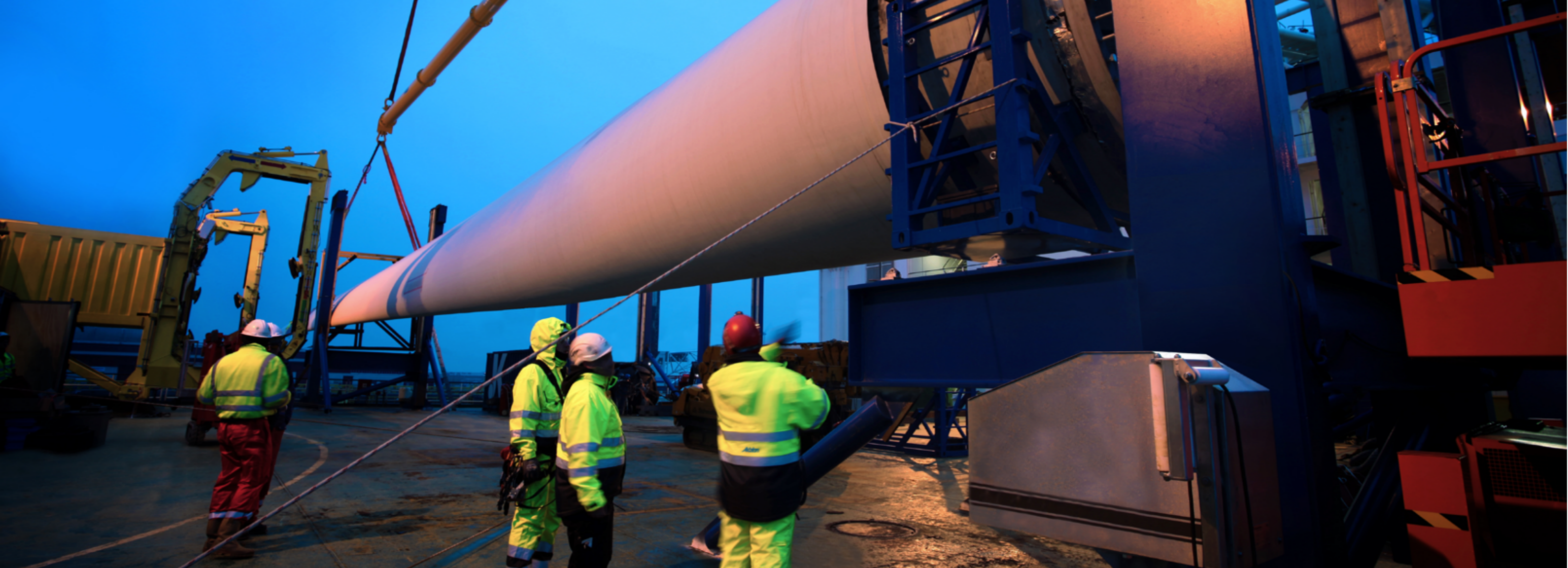
Rotor Blades

01.1 LIFTING EQUIPMENT OFFSHORE

Rotor Blades

Spreader Beam for Handling





01.1 LIFTING EQUIPMENT OFFSHORE

Piles

Upending Tool, WLL 1.000 ton





01.1 LIFTING EQUIPMENT OFFSHORE

Piles

Upending Tool, WLL 1.000 ton

01.1 LIFTING EQUIPMENT OFFSHORE

Piles

Upending Tool, WLL 1.000 ton





01.1 LIFTING EQUIPMENT OFFSHORE

Piles

Hinge





OLC

Offshore logistics Company

ANNIKA

VICTORIA MATHIAS

BREMERHAVEN

07-4

ANNIKA L 11,87m
1021 t 11,88m
Bureau: M&S NORTH GROUP

TUG

01.1 LIFTING EQUIPMENT OFFSHORE

Nacelle

Spreader Beam for Handling



01.1 LIFTING EQUIPMENT OFFSHORE

Rotor

Rotor Turning Device, hydraulic driven





01.1 LIFTING EQUIPMENT OFFSHORE

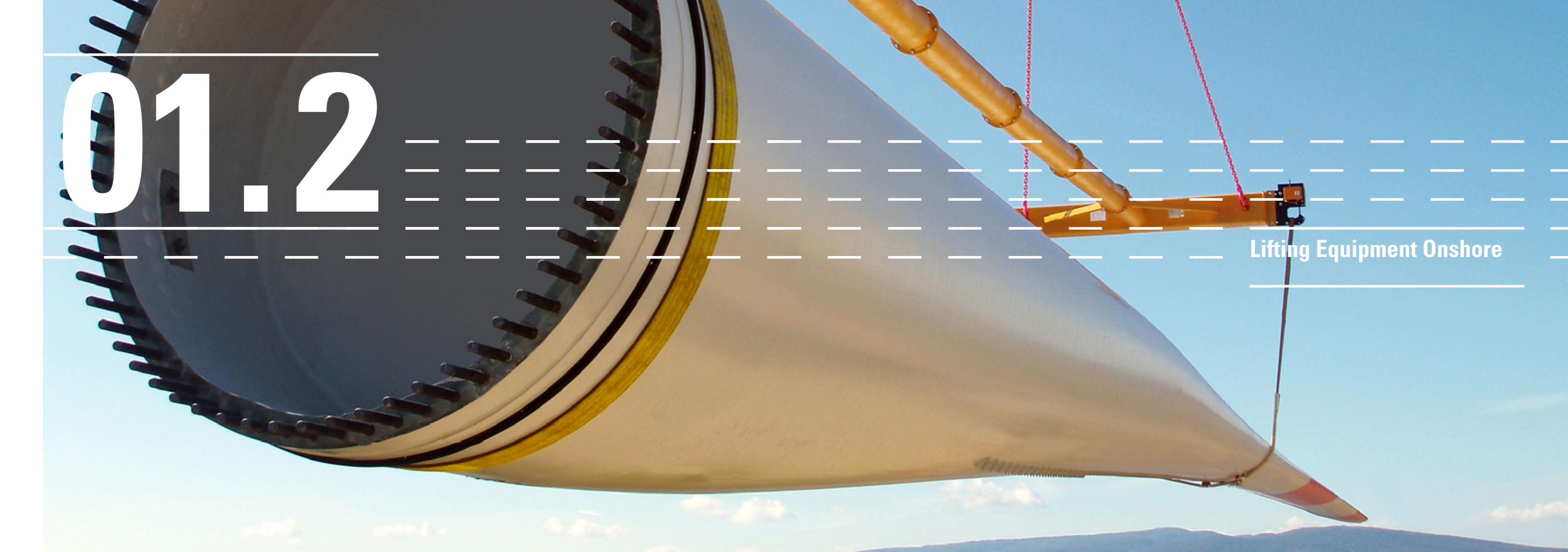
Rotor

Rotor Turning Device, hydraulic driven



01.2

Lifting Equipment Onshore



01.1 LIFTING EQUIPMENT ONSHORE

Tower Segments

Tower Erection





01.1 LIFTING EQUIPMENT ONSHORE

Tower Segments

Tower Attachment Points [Patent]

AXZION TAP
AXZION VarioTAP





01.1 LIFTING EQUIPMENT ONSHORE

Tower Segments

AXZION-VarioJ-Hook [Patent]

01.1 LIFTING EQUIPMENT ONSHORE

Tower Segments

AXZION-Pulley



01.1 LIFTING EQUIPMENT ONSHORE

Tower Segments





01.1 LIFTING EQUIPMENT ONSHORE

Blades

VarioBeam for Handling



01.3

Safety Management

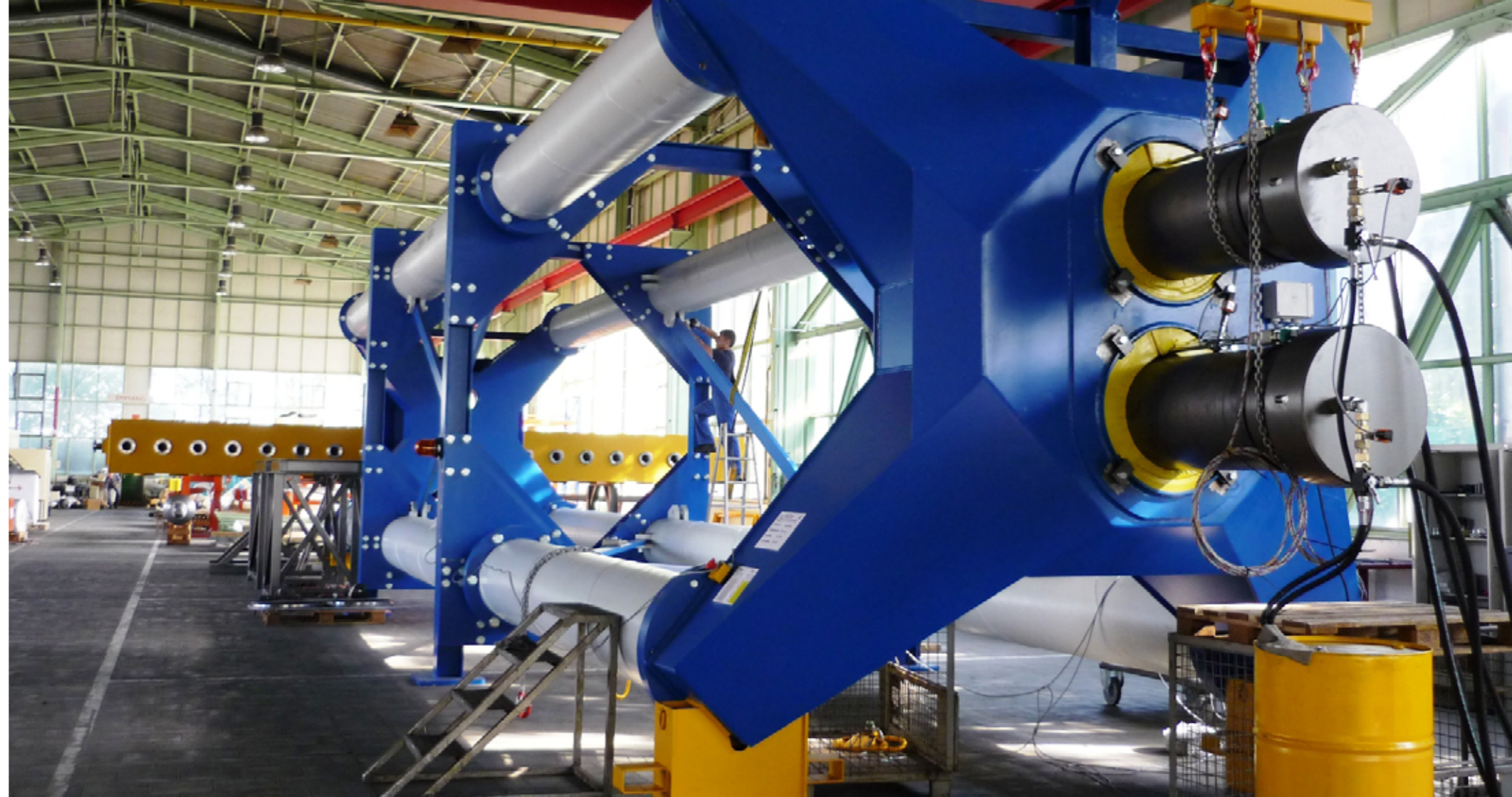
01.3 SAFETY MANAGEMENT

Prooftester

600 ton Prooftester

Die seit Jahren am Standort Langenfeld stehende Anlage hat eine Länge von 20 m, eine Höhe von 5 m und ein Eigengewicht von mehr als 100 t.

Die Steuerung der Lasttests erfolgt durch Handbetrieb oder computergesteuert mit Auswertung. Das Materialprüfungsamt NRW hat die Genauigkeit der Anlage bestätigt, sämtliche Messwerte sind geeicht und zertifiziert.



01.3 SAFETY MANAGEMENT

Prooftester

1.500 ton Prooftester

Die Prüfanlage hat eine Länge von 12 m, eine Höhe von 15 m und ein Eigengewicht von mehr als 150 t.

Die Zugkraft von maximal 1.500 t wird durch zwei riesige Hydraulikzylinder aufgebracht. Das Tankvolumen des Hydraulikaggregats ist so groß wie der Heizöltank im Keller eines Einfamilienhauses. Die Steuerung der Lasttests erfolgt manuell oder computergesteuert.



PRODUCT DATA

AXZION TAP

Article No.	Name	WLL [kg]	Dead weight [kg]
TAP 1700 0000 0	Tower Attachment Point, TAP	17000	20
TAP 2500 0000 0	Tower Attachment Point, TAP	25000	30
TAP 3500 2000 0	Tower Attachment Point, TAP	35000	30
TAP 5500 0000 0	Tower Attachment Point, TAP	55000	30

AXZION VarioTAP

Article No.	Name	WLL [kg]	Dead weight [kg]
TAP 2500 0000 2	Vario-Tower Attachment Point, right Side, Vario-TAP	25000	30
TAP 2500 0000 1	Vario-Tower Attachment Point, left Side, Vario-TAP	25000	30

AXZION J-Hook

Article No.	Name	WLL [kg]	Dead weight [kg]
JHO 4000 000 3	J-Hook	40000	300
JHO 4000 000 4	J-Hook	40000	320

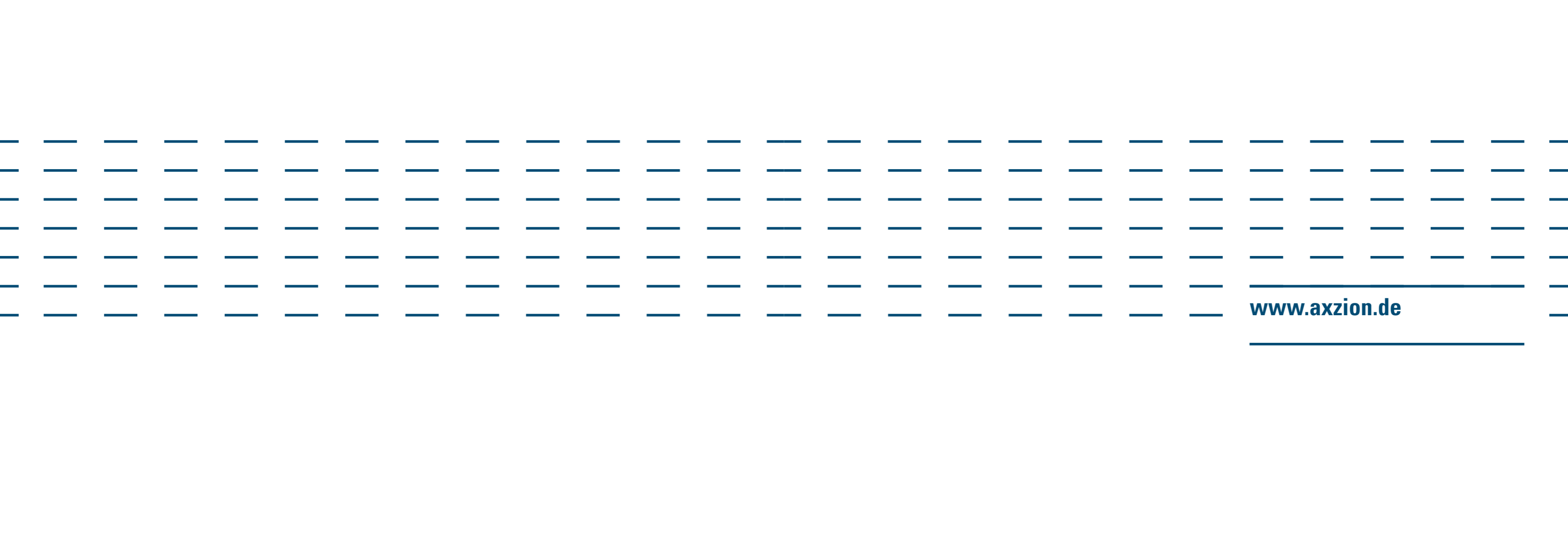
AXZION Vario J-Hook

Article No.	Name	WLL [kg]	Dead weight [kg]
JHO 4000 000 1	Vario J-Hook, ASME US-Norm	40000	754
JHO 6000 000 0	Vario J-Hook, EN 13155 EU-Norm	60000	754
JHO 8000 000 1	Vario J-Hook, ASME US-Norm	80000	970
JHO 10000 00 1	Vario J-Hook, ASME US-Norm	140000	1760

AXZION Pulley

Article No.	Name	WLL [kg]	Dead weight [kg]
PUL 4000 000 0	Pulley complete with sling, wire rope and shackles	40000 kg	*
PUL 4000 000 1	Pulley complete with sling, MagnumX and shackles	40000 kg	*
PUL 6000 000 1	Pulley complete with sling, MagnumX and shackles	60000 kg	*
PUL 8000 000 1	Pulley complete with sling, MagnumX and shackles	80000 kg	800
PUL 10000 000 1	Pulley complete with sling, MagnumX and shackles	100000 kg	800

* upon request



www.axzion.de

AXZION GKS
Stahl- und Maschinenbau GmbH

Winkelsweg 172
40764 Langenfeld
Germany
Tel +49 2173 20892 0

info@axzion.de
www.axzion.de
