



S.W.L. 2000 KG. Lift.  
Serial No. 4-172011  
**SpanSet**  
Trolley  
Beam Width: 66-220 mm

**SpanSet**<sup>®</sup>

**SAFELINE S-8  
HORIZONTAL LIFELINE**

**Height Safety  
Lifting  
Load Control  
Safety Management**



---

---

## Table of Contents

---

The S-8 Horizontal Lifeline	4
Key Features & Benefits	5
Force Attenuation	6
Typical Lifeline Configurations	7
Standard Components	8
S-8 Applications	9
Compatible Accessory PPE	10

---





---

## SAFELINE S-8 HORIZONTAL LIFELINE

---

---

### The Safeline S-8 Horizontal Lifeline

Established in 2002 Safeline UK have implemented ISO9001 Quality Management System and ISO14001 Environmental Management System.

The Safeline S-8 is a permanent horizontal lifeline. All components are manufactured from grades 304 and 316 Stainless Steel and suitable for work restraint or fall arrest. The S-8 includes a unique, patented force attenuation device® which allows systems to be configured to match installation requirements.

Safeline systems protect both users when working at height and management by providing a safe system of work.

### Key Features

- Tested and Certified at an external notified body to the new EN795:2012 Class C Anchor Devices Standard and meets and exceeds the requirements of PD CEN/TS 16415:2013 for systems used.
- Suitable for all roof types including composite, standing-seam and membrane roofs.
- No compromise of roof integrity
- Computer calculation package guarantees all installations are within the safe working limits of the Safeline System.
- All components are manufactured from grades 304 and 316 stainless steel.
- Unique patented energy attenuation device allows the system performance to be finely matched to the requirements of the installation
- Multi-functional parts to provide continuous hands free traversing of the lifeline
- Brackets and components designed to ensure suitability of mounting onto corners, contours and inclines
- Designed to provide comprehensive safety for a team of up to 6 workers of 140kg body mass in fall arrest allowing maximum worker access for work at height operations.

Force attenuation device® (Patent Pending PM343215)



# SAFELINE S-8 HORIZONTAL LIFELINE

## S-8 Force Attenuation



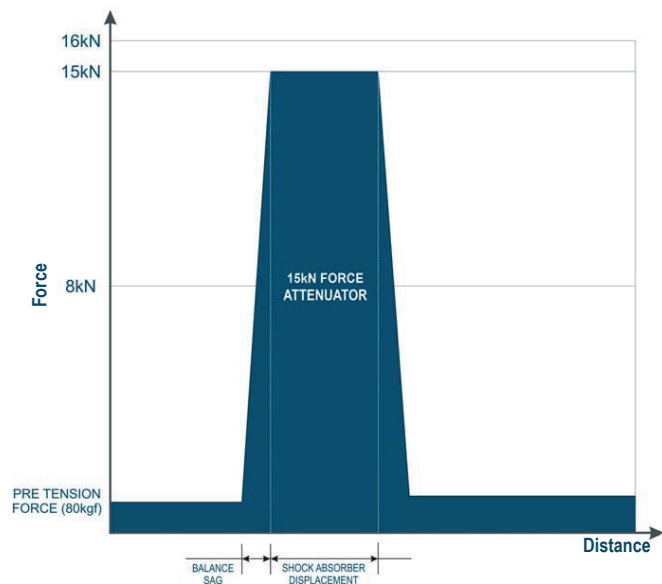
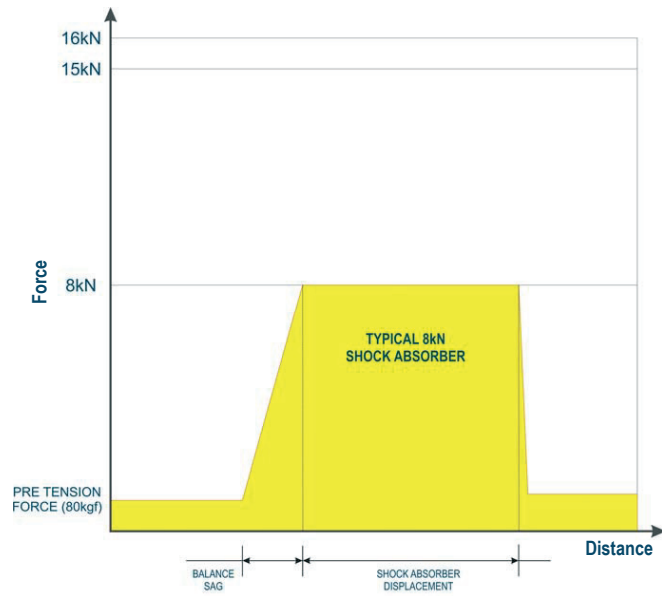
Safeline S-8 maximises the safety for the user by matching the capacity of the structure with the requirements of the lifeline with the appropriate patented S-8 Force Attenuator.

Safeline S-8 provides maximised safety for the user by matching the Installation structural mounting requirements with the appropriate patented S-8 Force Attenuator.

The S-8 is able to maximise the loading requirements of the intended installation structures' maximum permissible dynamic force by matching the Attenuator's load characteristics to the structure. This optimises the displacement of the lifeline in a fall arrest event and therefore reduces risk of secondary injuries from swing falls or collision with objects beneath the lifeline. The S-8 Force Attenuator is available with 10kN, 15kN or 20kN peak force characteristics.

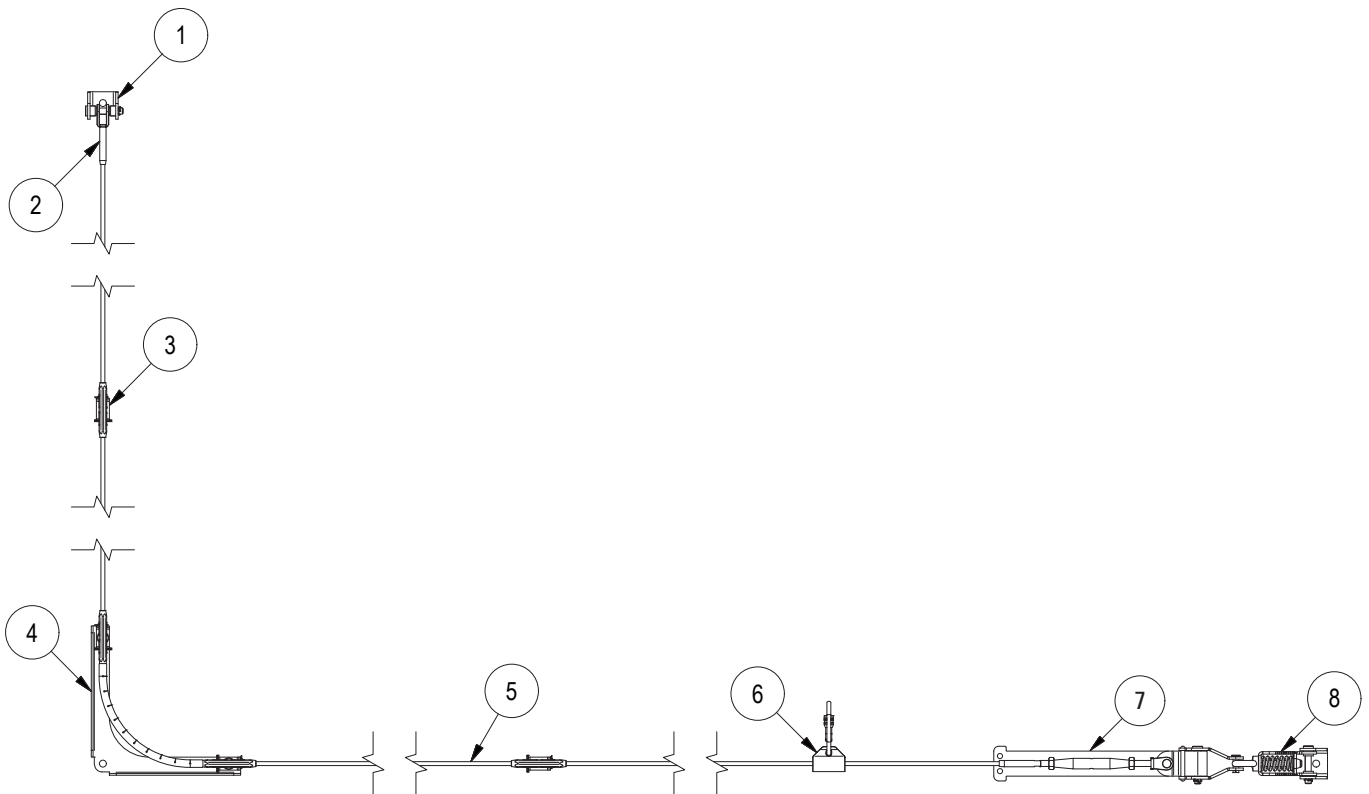
Other lifelines are typically fixed to a single force management value which disregards the capacity of the structure. Using a typical 10kN shock absorber on a structure capable of loads in excess of 16kN would provide a system that is only half as efficient as it could be. Using the S-8 Force Attenuator with the 15kN peak load would result in a system which is 93% efficient and, in comparison with the 10kN absorber, it would deploy around half the amount resulting in lower clearance height requirements, increasing safety for the user.

All S-8 Force Attenuators are capable of providing a consistent force to the structural anchor for up to 6 users in a multi-fall dynamic event.



## SAFELINE S-8 HORIZONTAL LIFELINE

Typical Lifeline



No	Description	Product Code
1	Horizontal lifeline end anchor bracket	198-EAHL
2	Fork end type swage cable termination	SL-003-T
3	Fixed angle intermediate cable guide anchor	198-INT
4	Intermediate cable guide 90 degree corner anchor	198-CBR-90
5	8mm stainless steel cable. 7x7 construction	SS778
6	Safeline horizontal lifeline mobile anchor traveller	SLC-002
7	Force attenuator for horizontal lifeline systems	89-ATN8R
8	Lifeline line tension indicator (60daN to 240daN)	198-TFI-60-250

The combination of smooth transition throughout the lifeline intermediate anchors and corner anchors with the security of knowing the S-8 lifeline has been installed to maximise safety for Users via the patented Force Attenuator makes the S-8 a perfect fit for all modern building, refurbishments or lifeline replacement projects.

# SAFELINE S-8 HORIZONTAL LIFELINE

## Typical Lifeline



## Assessment prior to installation

Prior to any installation it is important that a thorough survey is carried out by an approved Safeline installer. In addition to ensuring that a Safeline Horizontal Safety system is the appropriate solution for the problem identified, the installer will also ensure that all the requirements can be met in order to provide a fully compliant system in accordance with our extensive testing regime. The Considerations for the system can be split as follows;

### Identification of Suitable Structures or Substrates to Anchor the system

The first requirement for any permanently installed system is a suitable structure or substrate to fix the system on to.

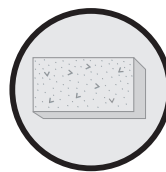
The system will commonly be mounted to a building or structure in which case it can be fixed to the structural elements. In some circumstances the system may require the addition of further structural elements.

The Safeline Approved installer will be able to identify suitable structural elements. A qualified engineer will be used where checks are required on the integrity of the structural elements or to design any additional structural elements.

Structure/Substrates which Safeline Can be Anchored to



Steel Work



Concrete



Roof Panels/  
Profiles

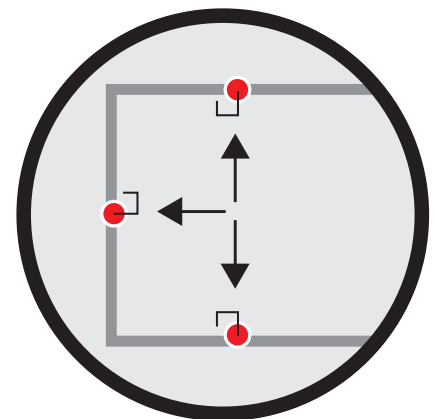


Any other element with  
suitable structural integrity

### Orientation and Method of Fixing the system

The Safeline Horizontal Safety System components can be fixed in different orientations to suit the locations available. The components can be mounted onto surfaces above, to the side or at foot level without affecting the operation of the system. The type of structure or substrate the system is fixed to will dictate the fixing method required. Systems fixed to concrete typically use resin anchors, whilst steelwork can be through bolted or mounted using brackets.

The Safeline calculation tool is used to check all system configurations prior to installation and ensures that the load requirements of the system are maintained below set levels. Using this information fixing methods can be identified for alternative materials such as wooden structures for example.



Positions in which Safeline brackets can be mounted to suitable structure/substrates



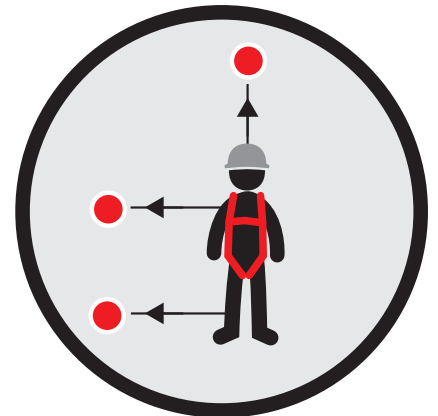


---

### Position in Relation to the user

The intended application for the Safeline horizontal Safety System will in many cases dictate the position of the system in relation to the user. For example roof top safety systems will be mounted at the user's foot level. Systems can however be mounted above the user, adjacent to the user or at the users foot level as required or to increase the safety of the user.

In situations where it is possible to choose the position, then systems mounted above the user can reduce fall heights, however systems mounted horizontally back from the fall hazard can prevent the fall totally irrespective of their height. The position of the system will therefore be selected to prevent falls where possible and if a fall can occur then they will be positioned such that the fall height is minimised.



System location in relation to the user

## SAFELINE S-8 HORIZONTAL LIFELINE



A Typical Construction Application (Soccer City Sports Stadium – South Africa)



A Typical Goliath Crane



### Safeline Systems may be utilised in many industrial applications, including;

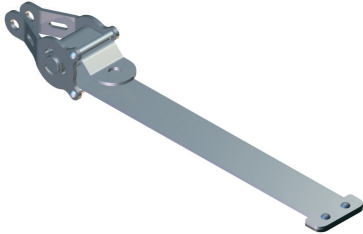
- **Property Maintenance** – To protect technicians carrying out routine maintenance and inspections of the property or plant.  
  
Examples include - cleaning roof lights or guttering, minor building repairs and servicing of air conditioning units.
- **Construction** – To protect workers during the construction phase, but also commonly specified by Architects as an integral aspect of the build to permit safe access for maintaining the property once complete.
- **Warehousing & Distribution** – To provide users safe access to storage racking for misaligned pallets, routine maintenance and general cleaning of the area.  
  
The systems will also enable access to automated collection machinery,(order packers), should a break down occur.
- **Bridges & Infrastructure** – To permit safe access for engineers once erection is complete to conduct inspections and maintain the structure. The Safeline System benefits the client by offering a simple, durable and flexible solution that can be attached to the structures piers, spans or supports.
- **Leisure & Entertainment** – To protect workers whilst conducting installation, operating equipment and maintenance activities including lighting/sound gantries, theatrical props, etc.
- **Transport** – Installed internally or externally in maintenance & loading bays or directly to suitable vehicles to permit safe access for persons needing to work at height on vehicles. This applies to road haulage vehicles, construction/agricultural vehicles, military/emergency service vehicles and rail stock.
- **Manufacturing** – To permit access for maintenance technicians and assembly workers on large scale production lines as found in the automotive and aerospace sectors.
- **Oil/Gas Processing** – To permit access for workers to areas of the production plant and processing equipment in order to perform routine maintenance tasks.
- **Oil/Gas Offshore** - To permit access for workers to the production areas of a platform to perform routine maintenance and servicing activities.
- **Cranes** – To protect operators or technicians whilst conducting routine inspection and maintenance activities or when accessing driver's cabs etc. Can be attached directly to the crane beam.
- **Power Stations** – To permit workers to access areas of the plant necessary to perform routine maintenance activities. The Safeline System can be attached to a variety of suitable structures found within such organisations.



# SAFELINE S-8 HORIZONTAL LIFELINE

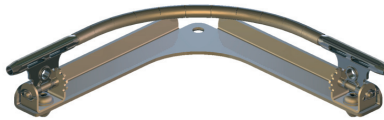
## S-8 Components

Force Attenuator



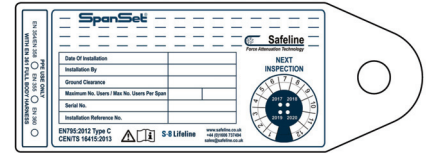
**Order Code: 89-ATN8R**

90 Degree Corner



**Order Code: 198-CBR-90**

S8 Inspection Tag



**Order Code: 198-S8-IST**

End Anchor



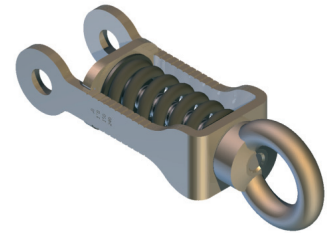
**Order Code: 198-EAHL**

Intermediate



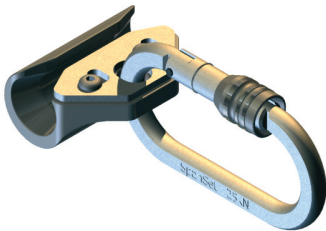
**Order Code: 198-INT**

Tension Indicator



**Order Code: 198-TFI-60-250**

Mobile Anchor



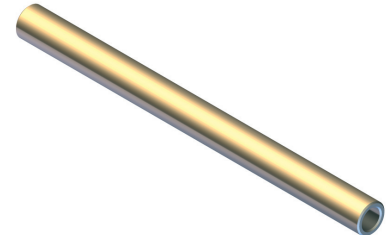
**Order Code: SLC-002**

Fork Swage Termination



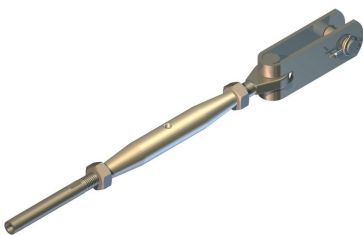
**Order Code: SL-003-T**

Cable Joiner



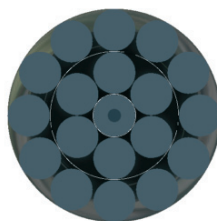
**Order Code: SL-014**

Cable Tensioner



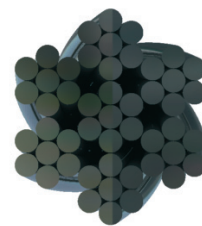
**Order Code: SL-002-T**

8mm 1x19 Cable



**Order Code: SS1198**

8mm 7x7 Cable



**Order Code: SS778**

## SAFELINE S-8 HORIZONTAL LIFELINE

Training, Accessories PPE

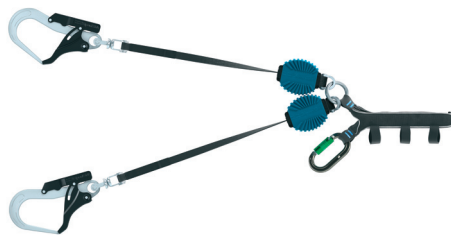


Excel Harness plus Belt  
Product Code: EXCEL-2-XB



SpanSet HP Helmet  
Product Code: 5/3274

Also available Visor & Bayonet Adaptors



DSL2 Dynamic Double Self  
Retracting Lanyard  
Product Code: FAR-11G10

Only SpanSet approved Personal Protective Equipment should be used with the Safeline Lifeline systems. Compatibility of the Safeline Lifeline product range with other manufactured PPE cannot be guaranteed and in some instances may result in serious failures of the equipment.

For help and advice on the selection of the appropriate PPE for use with Safeline Lifeline systems please contact your local SpanSet service provider.

### Training

SpanSet provide training courses to support their extensive product range.

- Height Safety for Industry
- Working at Height on Vehicles
- Safe Slings & Lifting Appreciation
- Practical Slings Beneath the Hook
- Rigging & Lifting For Workers at Height
- Lifting Equipment – Practical Inspection & Record Keeping
- Load Restraint for Road Transport Vehicles



## IDXpert Net



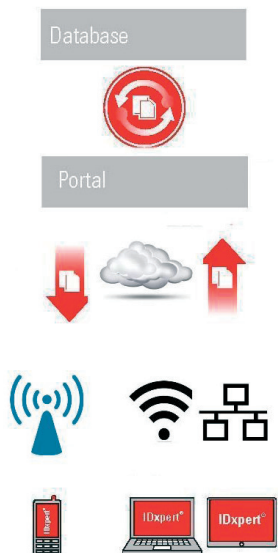
### Inspection, Service, Repair

European Standards dictate that all items of PFPE for work at height and all safety systems undergo a periodic examination by a competent person. In addition, in the UK, "BS 8437:2005 Code of practice for selection, use and maintenance of personal fall protection systems and equipment for use in the workplace." Section 13.1.2 –States "Formal inspection procedures should be put in place by employers to ensure that personal fall protection equipment is given a detailed inspection ("thorough examination") by a competent person before first use and at intervals not exceeding 6 months (or 3 months where the equipment is used in arduous conditions), and after circumstances liable to jeopardise safety have occurred.

SpanSet can perform the thorough inspections required by legislation and/or equipment manufacturers. We can also provide training for Competent Persons and therefore the combination of your staff and our services can increase the safety and ensure compliance.

## IDXpert Net<sup>®</sup>

- Product identification and asset management combined into one simple process
- Allows you to easily manage all the components of your Personal Fall Protection Equipment
  - Clear identification of product with RFID technology
  - Instant access to your records from any location with the online IDXpert Net portal
  - Simplifies inspection recording and inspection planning
  - Attach images, data sheets, instructions to your records
  - Remote access to your certification records
  - Transfer between multiple locations or mobile locations
  - Perform inspections or audits remotely with the IDXpert Net Mobile reader



Inspection data is instantly synchronised to the database via network, WiFi or mobile data



---

# Installations and More from SpanSet

---

## Textile Lifting Slings

### Load Control



**SpanSet also design, manufacture and supply a range of**

## Textile Lifting Slings

SpanSet offer an extensive range of Lifting Slings including the patented roundsling in the 1970's to the new generation Power Star Websling, the novel Joker hook and also the high capacity 100 tonne MagnumPlus roundsling.

### Load Control

The SpanSet name has fast become the acknowledged industry term for industrial load securing systems and as a manufacturer we can offer a wide selection of ratchet lashing systems including the patented ERGO ABS ratchet with a unique step by step tension release system giving you control over the load.

As a company we deal directly with Fleet Engineers and other Transport Professionals offering a range of Garment Rails, Shoring Poles, Winches, Decking Beams and Track.



SpanSet Ltd.  
Telford Way, Middlewich  
Cheshire CW10 0HX, UK  
Tel: +44 (0) 1606 737494  
Fax +44 (0) 1606 737502  
[www.spanset.co.uk](http://www.spanset.co.uk)