

SpanSet®

01

XTRACTA CONFINED
ACCESS AND
RECOVERY RANGE

Height Safety
Lifting
Load Control
Safety Management



SpanSet Worldwide



The SpanSet Group are world specialists in Height Safety, Lifting and Securing Loads with fifteen operating plants across the world and a global network of dealers.

SpanSet is here for you

- | | | |
|---------------|-------------|----------|
| - Switzerland | - France | - Italy |
| - Australia | - Germany | - Poland |
| - Austria | - Hungary | - Spain |
| - Brasil | - UK | - Taiwan |
| - China | - Indonesia | - USA |



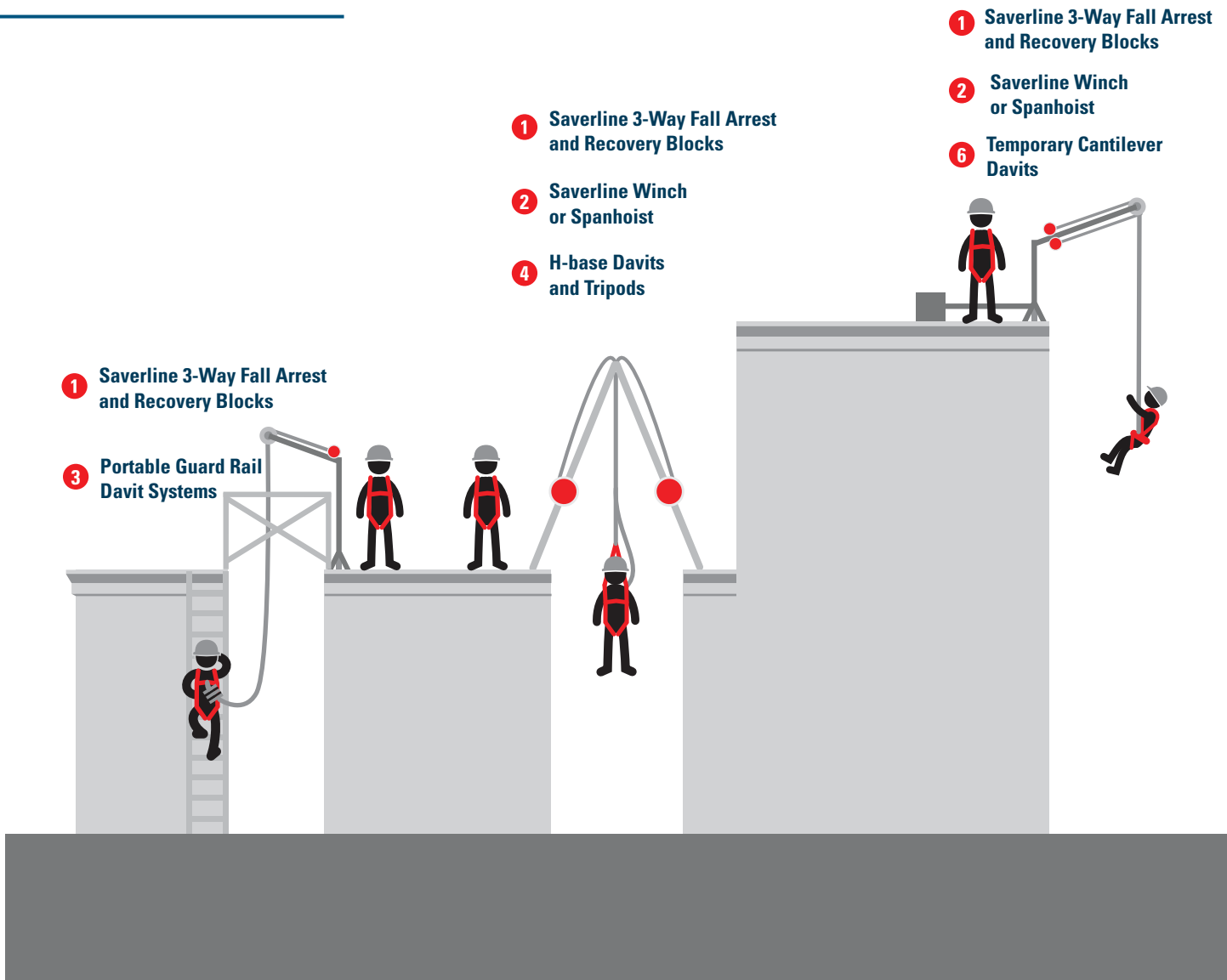
SpanSet UK have been established for over 40 years. SpanSet designs, manufactures and supplies Height Safety, Lifting and Load Control systems.

All SpanSet products have been developed to work as part of an overall safety solution, which includes products, installations, training, implementation, testing and servicing. By offering our customers an overall solution SpanSet is better able to meet customers' needs and help them develop safer solutions for working at height, lifting and load restraint.



For more information: log on to www.spanset.co.uk

XTRACTA CONFINED ACCESS AND RECOVERY RANGE



XTRACTA Confined Space Systems

The XTRACTA range provides a selection of different solutions for accessing and working in confined spaces.

The range combines Xtirpa Davit systems and Xtracta Tripod with Saverline blocks, SpanSet harness and accessories to create bespoke access, egress and rescue systems to suit your needs.

The Xtirpa Davits and Xtracta Tripod are designed to provide an effective and reliable anchorage to suit various environments where confined spaces are located.

1 The Saverline 3-Way Fall Arrest and Recovery Blocks provides fall protection and recovery of workers when accessing confined spaces.

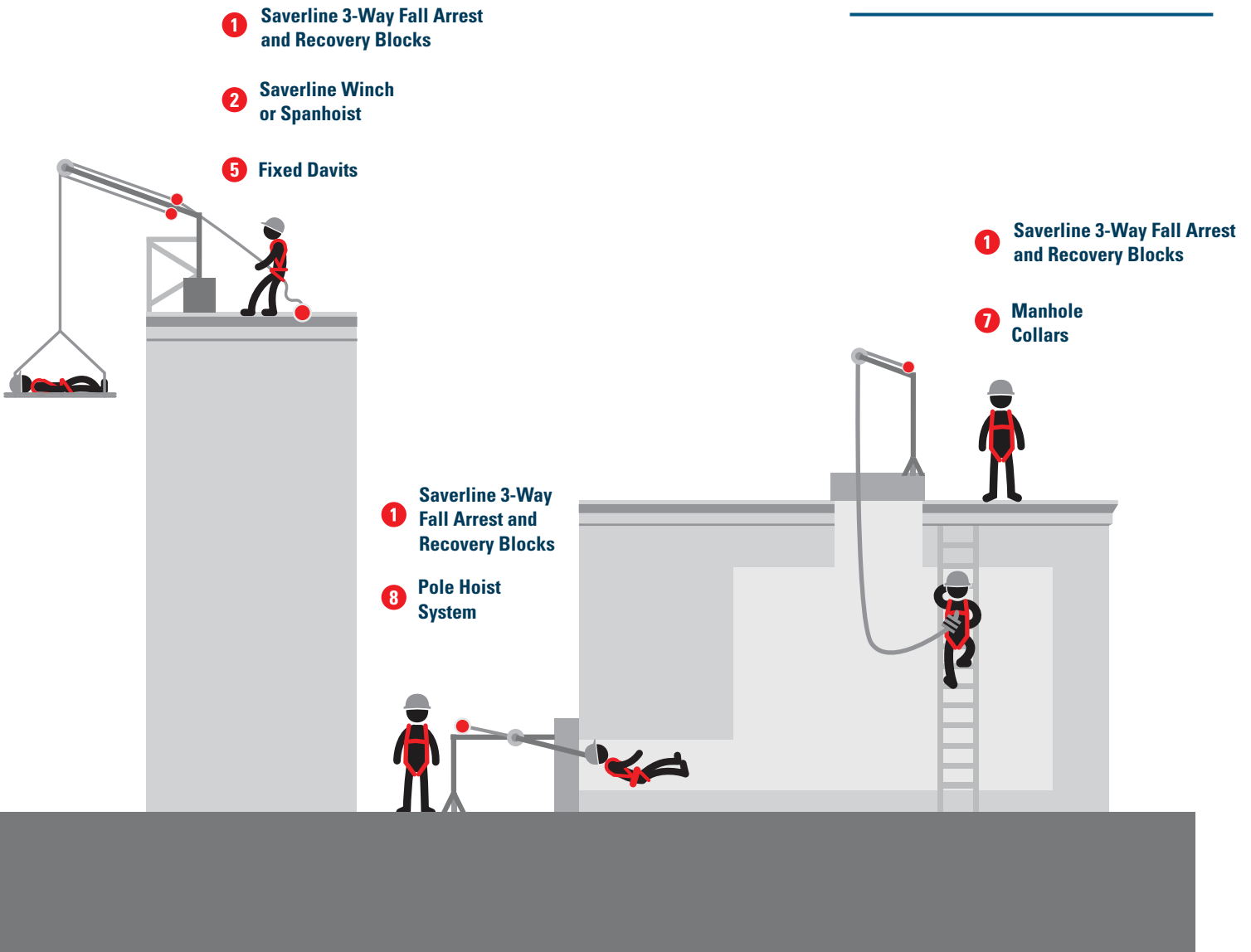
2 The Saverline Winch or Spanhoist can be added to the system to create an access and work position system for workers who must be lowered into a confined space.

The SpanSet confined space harnesses range from the lightweight two point rescue harness to the Confined Space Jacket Harness offering compatibility for breathing apparatus.

SpanSet also offer a series of lifting accessories for handling materials and for recovering, or suspending workers more comfortably.

3 Portable Guard Rail Davit Systems

Ideal when working in areas that have public access to prevent third parties from approaching the unprotected opening. The Portable Guard Rails system encloses the opening and creates the anchor system before the manhole is lifted.



4 H-base Davits and Tripods

Provides a flexible solution for where the opening size can vary.

5 Fixed Davits

There are 3 main reasons to use a fixed davit; 1. where a longer outreach is needed from the base, i.e. over an edge into a reservoir or tank. 2. Where the operation will be repeated on a regular basis. 3. Where the foot print around the manhole is limited.

6 Temporary Cantilever Davits

In locations where it is not possible to secure a fixed davit these temporary options provide a solution while also offering up to 1200mm of outreach over an edge.

7 Manhole Collars

Where access is required through a circular manhole and the surrounding surface is not level or suitable for a base such as the entry on a road tanker the collar system offers a practical solution.

8 Pole Hoist System

This provides an easy solution to rigging of 3-way recovery blocks and winches from an overhead anchor point. Retrieval of a worker horizontally from a tank is also simplified by using this system.

FEATURES AND BENEFITS OF THE XTRACTA RANGE



Innovative Design

The only patented system on the market that will allow you to install a davit arm on a manhole guard for rescue purposes.

Lightweight

- Manhold guard
- Davit arm 10.5kg
- Davit mast 10kg.

Using an aluminium composite (Duralcan®), the system has a maximum safe working load of 190.5kg

Ergonomic Design

The system can be easily transported and installed by one person. Set up is safe, easy and can be done in minutes.

More Versatile

The system is designed for multiple use, using different combinations of components to adapt for use in most kinds of confined spaces.

Easy Storage

No vehicle modifications are required and as the units are so compact they don't take up much storage space.

Cost Effective

The system's universality will save inventory costs, and as it reduces the incidence of back, shoulder and elbow injuries it will reduce pay outs on worker's compensation and time away from the workplace.

Built to Last

The aluminium composite used to build the system is highly corrosion resistant and has been independently tested.

Higher Rates of Compliance to Safety Regulations

Owing to the system's simple, safe and quick installation, employers will be able to implement safe working practices easily.

Patents

- European - 1490287
- United States - 7213715
- Canadian - 2479513
- Other patents pending.

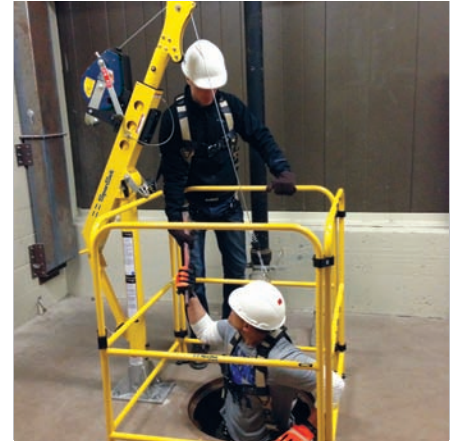
Compliance

- Meets or exceeds applicable ANSI, OSHA, CSST and CE Standards.



PORTABLE MANHOLE GUARD DAVIT SYSTEM

Portable Manhole Guard Portable Manhole Guard Davit System



These portable manhole guards have an integrated mast which, used in conjunction with a davit arm SPXTIN2210, transforms these systems into confined space fall protection and retrieval systems.

These systems will facilitate your access to underground chambers or any other type of confined space where a portable manhole guard is needed.

With a capacity of 191kg (safety factor 10:1) this system meets or exceeds CSA, ANSI, OSHA, CSST and CE Standards.

Fall Protection and Retrieval Davit Arm with Secondary Block

The fall protection and retrieval davit arm with secondary block will facilitate your access to underground chambers and any other confined space. Light, reliable and easy to install, this versatile davit arm can be used not only with the Portable Manhole Guard but also with the Tow Bar Hitch System, the H-Base System and the Mast Systems.

Its weight of only 15kg provides a capacity of 163kg when used with a Mast System, and a capacity of 191kg when used with the Manhole Guard System. With a 10:1 safety factor it is also equipped with a required 2,268kg anchor point requested by safety regulations and meets or exceeds CSA, ANSI, OSHA, CSST and CE Standards.

The system is infinitely expandable with the addition of extra barricade sections.

SPXTIN2108 - 1060mm Portable Manhole Guard



SPXT2 Portable Manhole Guard Davit System
(SPXT3 with Stabiliser)

PORTABLE MANHOLE GUARD DAVIT SYSTEM

Davit Arm



SPXTIN2108 Manhole Guard

Maximum Working Load with Davit Arm SPXTIN2210	191kg
Maximum Capacity at Anchorage Point	22.2kN
Weight	13kg
Corner Mast Length	113.7cm
Height	105.7cm
Length	98cm
Depth	99.1cm
Structural Tubes	Duralcan Aluminium
Levelling Screws	Stainless Steel Rubber
Hardware	Zinc Plated Steel
Finish	Security Yellow

SPXTIN2210 Davit Arm

Working Load Mass with Manhole Guard SPXTIN2108	191kg
Maximum Capacity with Lifeline Winch & Barricade - Position 1 and 2	19kN
Maximum Capacity with Material Handling - Position 3	9.5kN
Maximum Capacity at Anchorage Point	22kN
Weight	15kg
Length When Opened	203cm
Length When Closed	132cm
Extension and Guide Tubes	Aluminium
Davit Arm Link	Aluminium
Anchorage Hooks	Stainless Steel
Hardware	Zinc Plated Steel
Guide Tube Sliders	Ultra High Molecular-weight Polyethylene
Pulley	Black Acetal
Finish	Security Yellow



SPXTIN2210 - Davit Arm

PORTABLE MANHOLE GUARD DAVIT SYSTEM

Stabiliser

Manhole Guard Repositioning
Wheels

Portable Manhole Guard

Multi Function Barricade
Extension

Rubber Feet

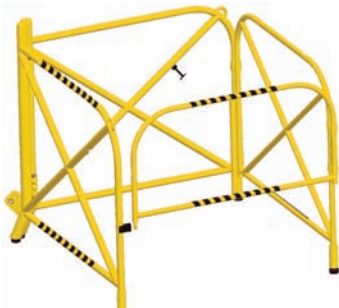


SPXTIN2108-18 - Stabiliser for 1060mm Portable Manhole Guard

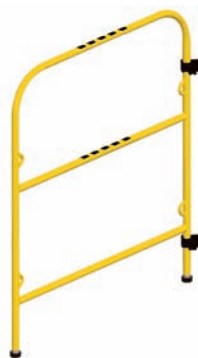


SPXTIN52 - Manhole Guard Repositioning Wheels

Also Available:



SPXTIN2001 - 875mm Portable Manhole Guard



SPXTA2101-04 - Multi-function barricade extension



SPXTA2001-28 - Large Rubber Feet for Manhole Guard

SPXTA2001-18 - Spiked Manhole Guard Feet

SPXTIN2108-18 1060mm Stabiliser

Weight	2kg
Height	46.6cm
Width	52.1cm
Depth	37.4cm
Structural Tubes	Duralcan Aluminium
Levelling Screws	Stainless Steel Rubber
Hardware	Zinc Plated Steel
Finish	Security Yellow

SPXTIN52 - Repositioning Wheels

Weight	17.5kg
Height	500mm
Width	650mm
Depth	700mm
Structural Tubes	Rectangular Sectioned Steel
Wheels	Ball Bearing No-Flat Rubber
Finish	Black Powder Coated



DANGER

Confined Space
Entry by Permit
Only

TOW BAR HITCH DAVIT SYSTEMS

Tow Bar Hitch Davit System
Trailer Hitch Mount



The most versatile system on the market, the Tow Bar Hitch Mount connects to most 50mm square vehicle receiver hitches, our most popular system offers adjustable screw pads for easy levelling.

This system uses the same davit arm as the Manhole Guard Davit System (SPXTIN2210) and gives a maximum capacity of 164kg and has a safety factor of 10:1 and meets or exceeds CSA, ANSI, OSHA, CSST and CE Standards.



SPXTIN2126 - Trailer Hitch Mount



SPXT6 - Tow Bar Hitch Davit System

TOW BAR HITCH DAVIT SYSTEMS

Davit Mast



SPXTIN2210 Davit Arm

See Portable Manhole Guard Davit System for specifications

SPXTIN2003 Mast

Working Load Mass with Davit Arm SPXTIN2210	164kg
Maximum Capacity with Davit Arm SPXTIN2210	16kN
Weight	10kg
Mast Material	Aluminium
Anchorage Plates	Aluminium
Finish	Security Yellow

SPXTIN2126 Tow Bar Hitch Mount

Working Load Mass with Mast SPXTIN2003 and Davit Arm SPXTIN2210	164kg
Maximum Capacity with Mast and Davit Arm SPXTIN2210	16kN
Hitch Vehicle Minimum Weight	2727kg
Weight	14kg
Extensions	Aluminium
Mast Sleeve	Aluminium
Extension Sliders	Black Delrin
Positioning Levels and Hardware	Zinc Plated Steel
Positioning Pads	Aluminium
Finish	Security Yellow



SPXTIN2003 - Davit Mast

TOW BAR HITCH DAVIT SYSTEMS

Davit Arm

Anchor Bolt Adapter

Universal Joint



SPXTIN2210 Davit Arm

See Portable Manhole Guard Davit System for details

SPXTA2126-21 Anchor Bolt Adapter

Maximum Capacity	164kg
Maximum Working Moment	0.95kN/m
Maximum Moment	0.95kN/m
Weight	15kg
Principal Body and Guide	Zinc Plated Stainless Steel
Hardware	Steel
Plate Support	Steel



SPXTIN2210 - Davit Arm

SPXTA2126-21 - Anchor Bolt Adapter for Trailer Hitch Mount

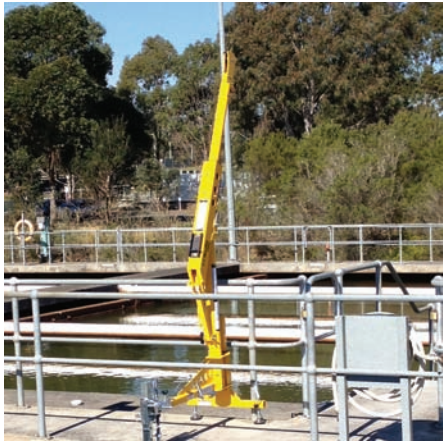


SPXTA2126-07 - Universal Joint for Trailer Hitch Mount



TOW BAR HITCH DAVIT SYSTEMS

Ext For Trailer Hitch Mount
90 Degree Extension
C Clamp Adapter



SPXTA2126-10 90° Extension

Weight	29kg
Length	132cm
Working Height	35.6cm
Width	5.1cm ²
Material	Steel
Finish	Security Yellow

SPXTA2126-09 Straight Extension

Weight	14kg
Length	193.7cm
Width	5.1cm ²
Material	Steel

SPXTA2126-07 Universal Joint

Weight	3.6kg
Length	28.5cm
Width	5.08cm ²
Material	Steel



SPXTA2126-10 - 90 Degree Extension for Trailer Hitch Mount



SPXTA2126-09 - 6ft (183cm) Extension for Trailer Hitch Mount



SPXTIN2126-14 - C Clamp Adapter for Trailer Hitch Mount

TOW BAR HITCH DAVIT SYSTEMS

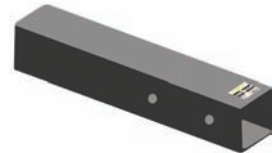
T-Base Mount Reducer
Counterweight Adapter
T-Base Mount Extension
Extendable Arm



SPXTA2305-20 - T-Base Mount Reducer



SPXTA2305-25 - Counterweight Adapter
for 1830mm Extension



SPXTA2305-16 - T-Base Mount Extension 1830mm



SPXTIN2237 - Extendable Arm for 1200mm Davit



TOW BAR HITCH DAVIT SYSTEMS

Universal T-Base Mount Davit Mast



SPXTIN2305 Universal T-Base

Working Load Mass with Mast SPXTIN2240 and Davit Arm SPXTIN2237	164kg
Maximum Capacity with Mast SPXTIN2240 and Davit Arm SPXTIN2237	16kN
Hitch Vehicle Minimum Weight	2727kg
Weight	33kg
Extensions	Aluminium
Mast Sleeve	Aluminium
Extension Sliders	Black Delrin
Positioning Levels and Hardware	Zinc Plated Steel
Positioning Pads	Aluminium
Finish	Security Yellow

SPXTIN2240 Mast

Maximum Working Load with Davit Arm SPXTIN2237	164kg
Maximum Capacity with Davit Arm SPXTIN2237	16kN
Weight	11kg
Mast	Aluminium
Handle	Aluminium
Finish	Security Yellow

SPXTIN2237 1200mm Davit Arm

Maximum Working Load with Mast SPXTIN2240	164kg
Maximum Capacity with Mast SPXTIN2240	16kN
Maximum Capacity at Anchor Point	22kN
Weight	16kg
Extension and Guide Tubes	Aluminium
Anchorage Hooks	Stainless Steel
Hardware	Zinc Plated Stainless Steel
Guide Tube Sliders	Ultra High Molecular-weight Polyethylene
Pulley	Black Acetal
Finish	Security Yellow

SPXTIN2305 - Universal T-Base Mount



SPXTIN2240 - Davit Mast



H-BASE DAVIT SYSTEM

Davit Arm

Mast

H-Base



This three-piece hoist system was designed to be used in conjunction with the davit arm SPXTIN2210 and the mast SPXTIN2003 that are common to the three davit systems. The portable lower base with adjustable feet to fit most standard confined spaces. It offers a solution for the entry, rescue and positioning of personnel.

The combination of davit arm and mast allows the operator to pivot the system for easier and safer rescue. Durable and versatile, the system has a capacity of 164kg and has a safety factor of 10:1 and meets or exceeds CSA, ANSI, OSHA, CSST and CE Standards.

SPXTIN2210 Davit Arm

See Tow Bar Hitch Davit System for specifications

SPXTIN2003 Mast

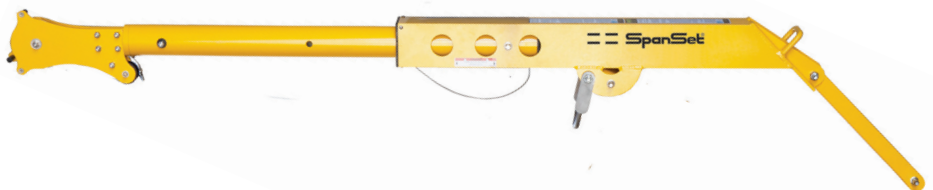
See Tow Bar Hitch Davit System for specifications

SPXTIN2118 H-Base

Maximum Working Load with Mast and Davit Arm SPXTIN2210	164kg
Maximum Capacity with Mast and Davit Arm	16kN
Weight	36.82kg
Extensions	Aluminium
Mast Sleeve	Aluminium
Suspension and Anchor Points	Aluminium
Extension Sliders	PVC Pipe
Positioning Levels and Hardware	Zinc Plated Stainless Steel
Positioning Pads	Aluminium
Finish	Security Yellow



SPXTIN2003 - Davit Mast



SPXTIN2210 - Davit Arm

H-BASE DAVIT SYSTEM

H-Base



SPXTIN2118 - H-Base



SPXT5 - H-Base Davit System

FIXED DAVIT SYSTEMS

Davit Arm

Mast



This low clearance davit with an integrated mast and davit arm is designed for use in any of the 610mm adapter bases. Ideal for when a shorter clearance is required.

The unit weighs 7kg and has a weight capacity of 163kg, is 915mm in height and has a 460mm reach.



SPXTIN2295 - Low Clearance Mast and Davit (base adapter for application use only. Available separately.

This unique, adjustable davit system was developed to allow workers greater versatility, with the mast adapter permanently fixed to a structure and the davit arm and mast moved around as required. Ensuring easy and safe access into a wide variety of confined spaces this davit is easily positioned from 380mm,

450mm and 600mm. The davit's versatility offers a solution where other conventional systems are impractical.

With a safety factor of 10:1 the davit meets or exceeds CSA, ANSI, OSHA, CSST and CE Standards.

Code	Description	Min Reach	Max Reach	Max Height
SPXT24	600mm Davit, Mast and Base kit	385mm	601mm	2992mm
SPXTIN2210	600mm Davit Arm	–	–	–
SPXTIN2003	Standard Mast	–	–	–
SPXTIN2044	380mm Mast Extension	–	–	3372mm
SPXTIN2109	450mm Mast Extension	–	–	3442mm
SPXTIN2045	600mm Mast Extension	–	–	3592mm
SPXTIN2005	Stainless Steel Floor Adapter	–	–	–

SPXTIN2210 Davit Arm

See Tow Bar Hitch Davit System for details

SPXTIN2003 Mast

See Tow Bar Hitch Davit System for details

FIXED DAVIT SYSTEMS

Davit System
Stainless Steel Floor Adapter
Mast Extension



SPXTIN2005 Stainless Steel Floor Adapter

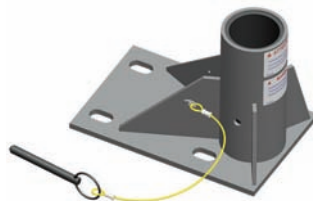
Maximum Working Moment	0.97kN
Maximum Moment	13.5kN
Weight	10kg
Plate and Gussets	Stainless Steel
Sleeve	Stainless Steel
Sleeve Bearing	Acetal Black Delrin
Pin	Zinc Plated Stainless Steel
Lanyard	Nylon Covered Steel Cable

SPXTIN2044 380mm/450mm/600mm Mast Extensions

Maximum Working Load with Davit Arm SPXTIN2210	164kg
Maximum Capacity with Davit Arm SPXTIN2210	16kN
Weights	9kg/11kg/12kg
Cylinder and Sleeve	Steel DOM 1026
Pin	Zinc Plated Stainless Steel
Lanyard	Nylon Covered Steel Cable
Finish	Security Yellow



SPXTIN2045 - 600mm Mast Extension



SPXTIN2005 - Stainless Steel Floor Adapter



SPXT24 - 600mm [24"] Davit System

FIXED DAVIT SYSTEMS

Davit Arm and Mast



This unique, adjustable davit system was developed to allow workers greater versatility, with the mast adapter permanently fixed to a structure and the davit arm and mast moved around as required.

Ensuring easy and safe access into a wide variety of confined spaces this davit is easily positioned from 775mm, 915mm and 1200mm. The davit's versatility offers a solution where other conventional systems are impractical.

With a safety factor of 10:1 the davit meets or exceeds CSA, ANSI, OSHA, CSST and CE Standards.



SPXTIN2240 - Davit Mast

Code	Description	Min Reach	Max Reach	Max Height
SPXT48	1200mm Davit, Mast and Base Kit	775mm	1200mm	2224mm
SPXTIN2237	1200mm Davit Arm	–	–	–
SPXTIN2240	Mast	–	–	–
SPXTIN2238	Stainless Steel Floor Adapter	–	–	–
SPXTIN2238	Stainless Steel Floor Adapter	–	–	–

SPXTIN2237 1200mm Davit Arm

Maximum Working Load with Mast SPXTIN2240	164kg
Maximum Capacity with Mast SPXTIN2240	16kN
Maximum Capacity at Anchor Point	22kN
Weight	16kg
Extension and Guide Tubes	Aluminium
Anchorage Hooks	Stainless Steel
Hardware	Zinc Plated Stainless Steel
Guide Tube Sliders	Ultra High Molecular-weight Polyethylene
Pulley	Black Acetal
Finish	Security Yellow

SPXTIN2240 Mast

Maximum Working Load with Davit Arm SPXTIN2237	164kg
Maximum Capacity with Davit Arm SPXTIN2237	16kN
Weight	11kg
Mast	Aluminium
Handle	Aluminium
Finish	Security Yellow

FIXED DAVIT SYSTEMS

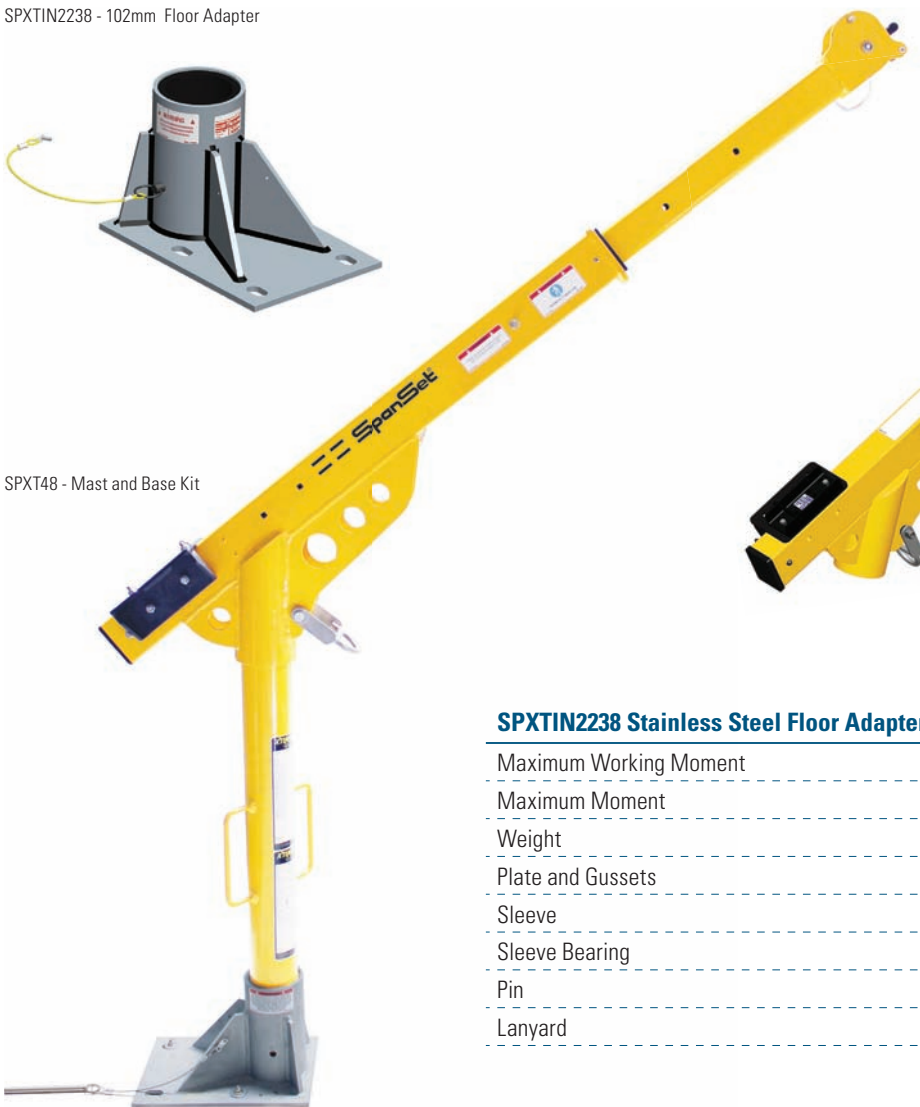
- Floor Adapter
- Mast and Base Kit
- Extendable Davit Arm



SPXTIN2238 - 102mm Floor Adapter



SPXT48 - Mast and Base Kit



SPXTIN2237 - Extendable Davit Arm



SPXTIN2238 Stainless Steel Floor Adapter

Maximum Working Moment	1.9kN
Maximum Moment	19.5kN
Weight	23kg
Plate and Gussets	Stainless Steel
Sleeve	Stainless Steel
Sleeve Bearing	Acetal Black Delrin
Pin	Zinc Plated Stainless Steel
Lanyard	Nylon Covered Steel Cable

FIXED DAVIT SYSTEMS

Davit Arm



This unique, adjustable davit system was developed to allow workers greater versatility, with the mast adapter permanently fixed to a structure and the davit arm and mast moved around as required.

Ensuring easy and safe access into a wide variety of confined spaces this davit is easily positioned from 1525mm to 2430mm. The davit's versatility offers a solution where other conventional systems are impractical.

With a safety factor of 10:1 the davit meets or exceeds CSA, ANSI, OSHA, CSST and CE Standards.

Code	Description	Min Reach	Max Reach	Max Height
SPXT96	2400mm Davit, Mast and Base Kit	1525mm	2430mm	2785mm
SPXTIN2197	2400mm Davit Arm	—	—	—
SPXTIN2199	Mast	—	—	—
SPXTIN2201	Stainless Steel Floor Adapter	—	—	—
SPXTIN2238	Stainless Steel Floor Adapter	—	—	—

SPXTIN2197 - 2400mm Davit Arm

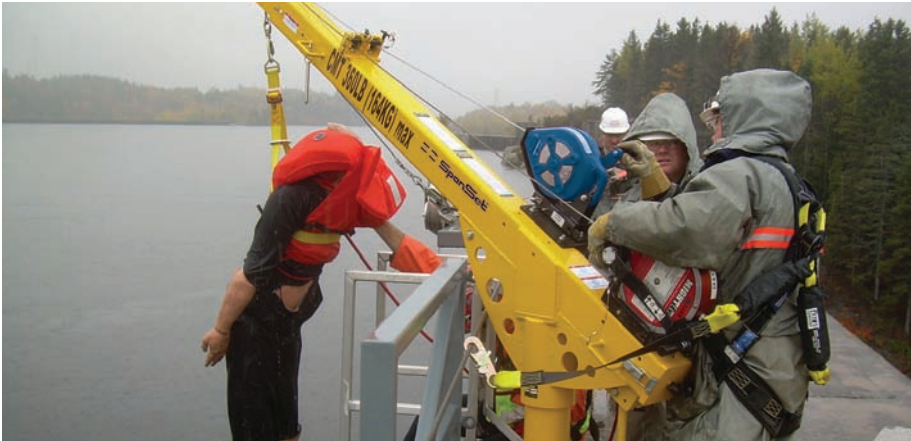


SPXTIN2197 Davit Arm

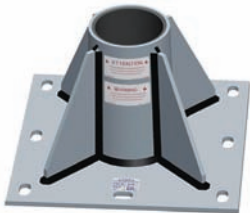
Maximum Working Load with Winch and Mast SPXTIN2199 Position 1 or 2	164kg
Maximum Capacity Material Handling with Mast SPXTIN2199 Position 1 or 2	16kN
Maximum Capacity at Anchor Point	22kN
Weight	15kg
Length When Opened	203cm
Length When Closed	132cm
Extension and Guide Tubes	Aluminium
Davit Arm Link	Aluminium
Anchorage Hooks	Stainless Steel
Hardware	Zinc Plated Steel
Guide Tube Sliders	Ultra High Molecular-weight Polyethylene
Pulley	Black Acetal
Finish	Security Yellow

FIXED DAVIT SYSTEMS

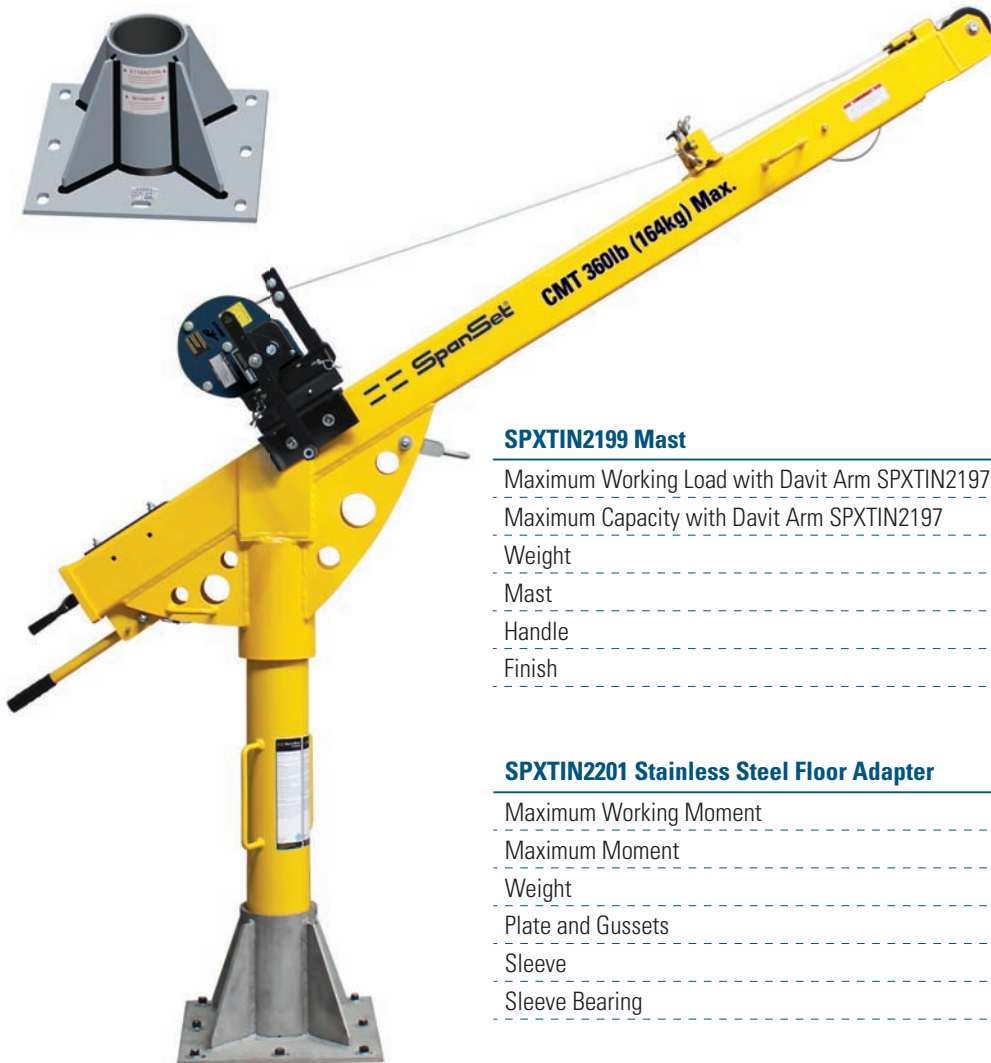
Davit Mast
Floor Adapter



SPXTIN2201 - 2400mm Floor Mount Adapter



SPXTIN2199 - Davit Mast



SPXTIN2199 Mast

Maximum Working Load with Davit Arm SPXTIN2197	164kg
Maximum Capacity with Davit Arm SPXTIN2197	16kN
Weight	11kg
Mast	Aluminium
Handle	Aluminium
Finish	Security Yellow

SPXTIN2201 Stainless Steel Floor Adapter

Maximum Working Moment	3.9kN
Maximum Moment	39kN
Weight	33kg
Plate and Gussets	Stainless Steel
Sleeve	Stainless Steel
Sleeve Bearing	PVC Pipe

COUNTERWEIGHT SYSTEM

Davit Mast

Extendable Arm

Removable Adapter



This counterweight system is designed for multiple confined space access in the same area where the extra reach of the 1200mm davit arm is required. Additionally, it can be used in areas where a fixed base is not possible.

The system consists of a central unit to which a number of optional equipment can be added, including extensions, leg adjustment and anchoring options.

With a weight capacity of 163kg this system can be used in conjunction with a counterbalancing weight rack or a wheel pad assembly when using a vehicle. The davit arm has a 2270kg anchor point.



SPXTIN2237 - Extendable Arm for 1200mm Davit

SPXTIN2240 - Davit Mast for 1200mm Davit
1070mm Height

SPXTIN2313 - Davit Mast for 1200mm Davit
1070mm Height

SPXTA2237-06 - Removable Adapter for Positioning Winch

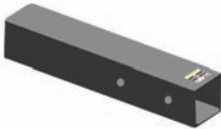
COUNTERWEIGHT SYSTEM

- Counterweight Adapter
- T-Base Mount Extension
- T-Base Mount, Base
- Weight Plates
- Base Extension Tube



Optional Accessories

SPXTA2305-25 - Counterweight Adapter for 1830mm Extension

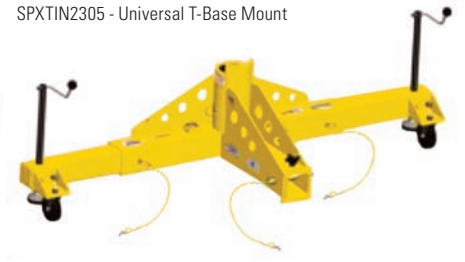


SPXTA2305-16 - T-Base Mount Extension 1830mm



Required Components

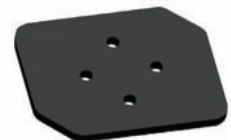
SPXTIN2305 - Universal T-Base Mount



SPXTA2305-27 - Counterweight Base



SPXTP2305-16n - 23kg Counterweight Weight Plates



SPXTA2305-23 - Counterweight Base Extension Tube



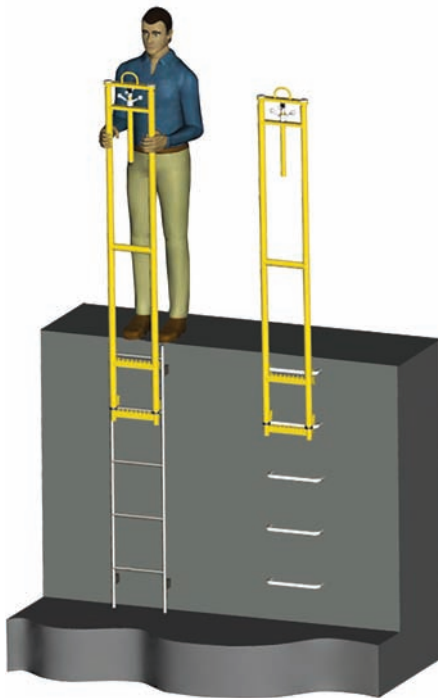
ACCESSORIES

Manhole Ladder Extension

Manhole Adaptable Hand Rail



The SpanSet Xtirpa Manhole Ladder Extension helps to provide extra safety by offering a secure handhold when entering a manhole from ground level, reducing the chance of slips or falls.



SPXTIN2252-05 - Manhole Ladder Extension

This adaptable hand rail is used with davit mast SPXTIN2003 and allows safer and easier entry and egress from confined spaces by providing secure handholds. The hand rail weighs 2.5kg.



SPXTIN2282 - Manhole Adaptable Hand Rail

ACCESSORIES



Flush Floor Adapters
 Floor Mount Adapters
 Centre Mounted Floor Adapter
 Sleeve Adapter



SPXTIN2266 - Flush Floor Adapter for 102mm Mast



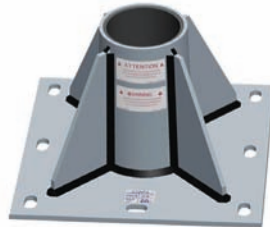
SPXTIN2006 - Flush Floor Adapter (steel) SPXTIN2114 - (zinc)



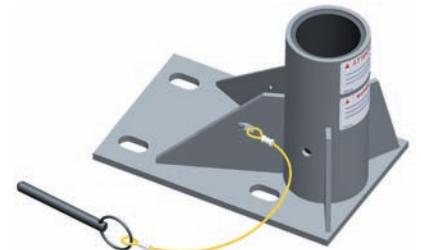
SPXTIN2007 Fresh Concrete Flush Floor Adapter



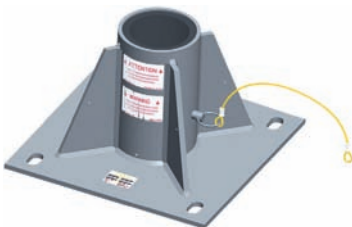
SPXTIN2238 - 1200mm Floor Mount Adapter (stainless steel)



SPXTIN2201 - 2400mm Floor Mount Adapter (stainless steel)



SPXTIN2005 - 600mm Floor Mount Adapter (stainless steel)
 SPXTIN2106 - (zinc)



SPXTIN2254 - Centre Mounted Floor Adapter for 102mm Mast



SPXTIN2105 - Centre Mounted Floor Adapter SPXTIN2137 - (zinc)



SPXTIN2255 - Sleeve Adapter for 102mm Mast

ACCESSORIES

Sleeve Adapter

Cylinder Reducer

Wall Mount Adapter

Universal Ring Adapter

Angle Wall Adapter

Corner Mounted Adapters

Transformer Adapter

Sliding Adapter



SPXTIN2097 - 600mm Sleeve Adapter (stainless steel)
SPXTIN2115 - (zinc)



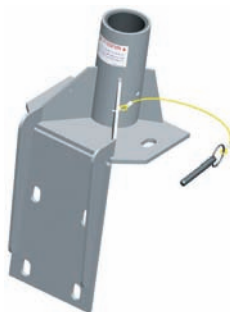
SPXTA2201-03 - Cylinder Reducer 140mm to 76mm



SPXTIN2013 - 600mm Wall Mount Adapter (stainless steel)
SPXTIN2107 - (zinc)



SPXTIN2087 - Wall Mounted Universal Ring Adapter
(stainless steel)



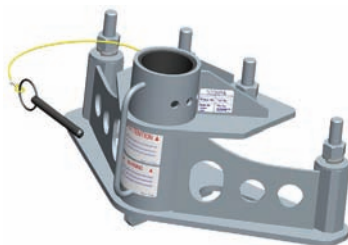
SPXTIN2117 90° Angle Wall Adapter (stainless steel)



SPXTIN2133 - Inner 90° Corner Mounted Adapter
(stainless steel) SPXTIN2134 - (zinc)



SPXTIN2131 - Extended 90° Corner Mounted Adapter
(stainless steel) SPXTIN2132 - (zinc)



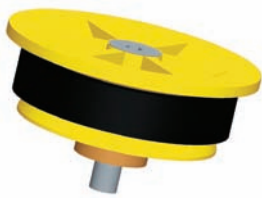
SPXTIN2171 - SGE30MVA Transformer Adapter



SPXTIN2208 - Sliding Adapter for 380mm x 140mm Beams

ACCESSORIES

Adapters



SPXTIN2072 - Adapter Cap
SPXTIN2073 - Adapter Cap with Steel Wire



SPXTA2237-06 - Removable Adapter for Positioning Winch



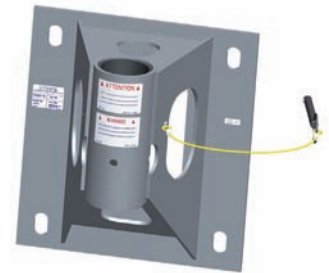
SPXTIN2021 - Barrel Adapter (stainless steel)
SPXTIN2129 - (zinc)



SPXTIN2253 - Mural Adapter for 102mm Mast



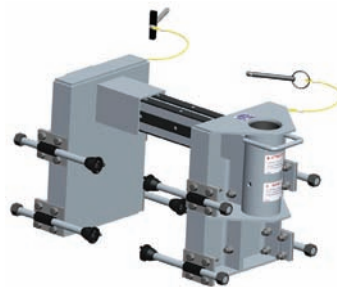
SPXTIN2085 - H-Beam Adapter



SPXTIN2124 - 203mm Clearance Mural Adapter (stainless steel)
SPXTIN2067 - (zinc)



SPXTIN2207 - Zinc Plated Adapter Cap
SPXTIN2206 - Adapter Cap with Steel Wire



SPXTIN2125 - 635-1140 Adapter



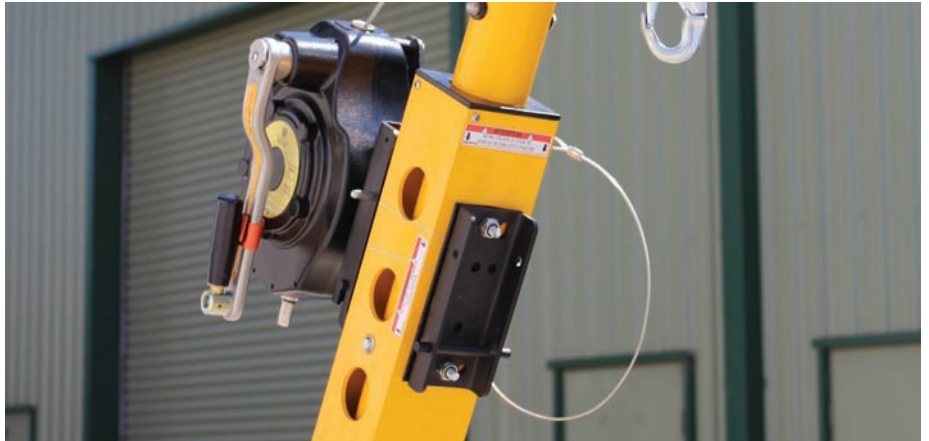
SPXTIN2126-14 - C Clamp Adapter for Trailer Hitch Mount

ACCESSORIES

Brackets

Adapters

Lifelines



SPXTA2002-22N - Mounting Bracket (comes with davit)
also suits the Sala SRL and Winch



SVLWB-20 - Bracket for 20 Metre Personnel Winch



SVLRB15-BRACKET - 3 Way Retracting Lifeline



SVLRB15-BRACKET - 3 Way Retracting Lifeline

ACCESSORIES

- Pole Hoist
- Adjustable T-Bar Leg
- Pole Hoist Swivel Head
- Mounting Bracket



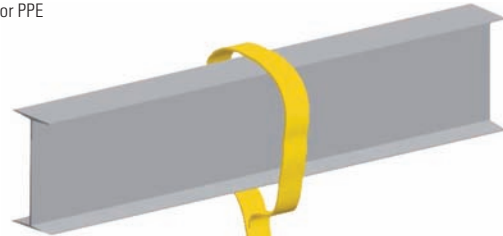
This two piece portable rescue system is one of the most versatile on the market. With the use of a certified anchor point, the rotating head allows you to retrieve someone in a confined space both vertically and horizontally.

The hoist is 2160mm fully extended with the first pin position at 1320mm and additional pin points at 1450mm, 1575mm, 1675mm, 1830mm and 1930mm.

The pole hoist weighs 6kg.

Constructed from yellow security powder-coated aluminium the hoist comes complete with bracket SPXTA2002-22N. An adjustable T-bar leg (SPXTIN2127) is available separately. This pole hoist meets or exceeds EN795 CSA, ANSI, OSHA and CSST Standards.

SPXTIN8008 - Pole Hoist System for PPE



SPXTIN2127 - Adjustable T-Bar Leg



SPXTIN2120 - Pole Hoist Swivel Head



SPXTIN2002-22N - Mounting Bracket



ACCESSORIES

Manhole Collar Options



Description	Size (mm)	Code
Cone Shaped Safety Ring	760	SPXTIN2089
Cone Shaped Safety Ring	710	SPXTIN2089

Description	Size (mm)	Code
Fall Arrest/Retrieval Manhole Collar	460-500	SPXTIN2219
Fall Arrest/Retrieval Manhole Collar	500-560	SPXTIN2220
Fall Arrest/Retrieval Manhole Collar	560-610	SPXTIN2221
Fall Arrest/Retrieval Manhole Collar	610-660	SPXTIN2217
Fall Arrest/Retrieval Manhole Collar	660-710	SPXTIN2222
Fall Arrest/Retrieval Manhole Collar	710-760	SPXTIN2218
Fall Arrest/Retrieval Manhole Collar	760-810	SPXTIN2169
Fall Arrest/Retrieval Manhole Collar	810-860	SPXTIN2223
Fall Arrest/Retrieval Manhole Collar	860-910	SPXTIN2224
Fall Arrest/Retrieval Manhole Collar	1080-1120	SPXTIN2180



SPXTA2217-05 - Ladder Adapter for Manhole Collar



SPXTIN2010 - Retaining Ring

ACCESSORIES

Removable Delrin Hinge Multi Functional Barricade



This most innovative 1070mm multi-functional barricade is manufactured from aircraft aluminium for durability and dependability.

Easy to fold, lightweight at only 13kg and easily stored in a vehicle, this unit offers a unique concept which allows the worker to assemble as many sections as needed.

With its removable delrin hinges [SPXTA2101-4], you will be able to create a very effective safe working area for any configuration.

SPXTIN2101 - Multi-functional barricade



SPXTA2101-04 - Multi-function barricade extension



SPXTA2101-04 - Removable Delrin Hinge



ACCESSORIES

Manhole Cover Lifter Safe Lifting Kit



This unique concept was designed for easy handling of manhole covers. Light and durable, this model will offer an ergonomic and safe way of lifting the heaviest lids without strain or injury. The easy ratchet system allows you to always work in an ergonomic position.



SPXTIN2071 - Manhole Cover Lifter

Manhole Cover Lifter Characteristics

Weight	6kg
Height	1346mm
Materials	Aluminium and zinc plated steel
Strap	Black nylon
Foot	Non-skidding foot
Mechanism	Automatic rewinding mechanism in stainless steel
Maximum Capacity	1220kgm strap tension

Safe Lifting Kit

Order Code: SAFE LIFT KIT 150

- Mechanical lifting system that replaces the use of manual lifting techniques
- Quick and simple, foolproof rope hoist kit
- Drop proof auto lock function
- SWL 150kg
- Factor of safety 7:1
- Available in 25m and 50m height of lift versions
- Can be used in conjunction with Grabba bag
- Supplied with clear user instructions
- Individually serial numbered certification for traceability
- Conforms to machinery directive 2006/4/EC



ACCESSORIES

Carry Bags and Trolley



SPXTP2001-050 - Carry Bag for 865mm Manhole Guard



SPXTP2108-025 - Carry Bag for 1067mm Manhole Guard



SPXTP2101-008 - Carry Bag for Multi-Functional Barricade



SPXTP2002-046 - Carry Bag for Davit Arm



SPXTP2118-017 - Carry Bag for H-Base Davit System [Body]



SPXTP2120-014 - Carry Bag for Pole Hoist



SPP2118-018 - Carry Bag for H-Base Davit System [Foot]



SPP2121-003 - Carry Bag for Pole Hoist



SPXTP2003-011 - Carry Bag for Davit Mast



SPXTIN2031 - Carry Bag for Davit Arm and SRL



SPXTIN2232 - Trolley for Xtirpa System

ACCESS AND RESCUE EQUIPMENT

2 Point Rescue Harness

Confined Space Jacket Harness

Driver Harness



2 Point Rescue Harness

- Lightweight Full Body Confined Space and Fall Arrest Rescue Harness
- Front and Rear Fall Arrest Attachments
- Adjustable at leg loops, shoulders and chest
- Available in standard size
- Steel attachment points and shoulder adjustment buckles
- Pocket Inspection Guide
- Supplied with clear instructions and individually serial numbered certification
- CE approved to EN361

Code: 2PR



Confined Space Jacket Harness

- Fully Body Harness incorporating a durable double skin jacket for Confined Space Entry
- Rear Integral extension strap for easy connection
- Adjustable at leg loops, shoulders and chest
- Available in standard size
- Stainless Steel buckles and fittings
- Reflective Strap
- Supplied with clear user instructions
- Individually serial numbered certification for traceability
- CE approved to EN361

Code: CSJH



Driver Harness

- Fully Body Harness for overhead Fall Arrest systems and Work Restraint in MEWP's
- Fall Arrest Attachment Point on integral extension strap, eliminating discomfort caused whilst driving by removing all metalwork from the rear of the harness
- Adjustable at leg loops, shoulders and chest
- Available in standard size
- Stainless Steel buckles and fittings
- Quick Release buckles for ease of fitting and removal
- Hi-Vis jacket has concealed panels to fit larger operatives
- Supplied with clear user instructions
- Individually serial numbered certification for traceability
- CE approved to EN361, EN354 and EN471

Code: 1PLQ-E HVJ



Quick Release Buckle

ACCESS AND RESCUE EQUIPMENT

Confined Space Lifting Bridle Saverline Retracting Lifeline Winch



Confined Space Lifting Bridle

- Lifting Bridle designed to allow upright descent
- And Elevation in confined Space
- Flat base karabiners ensure easy fitting to harness
- The rigid structure of the bridle keeps shape around the users head
- Fire retardant fabrics and webbing
- Aluminium Karabiners
- Stainless Steel rings and attachment points
- MBS 15kN (7.5kg per leg)
- Supplied with clear user instructions
- Individually serial numbered for certification for traceability

Code: 5/3219



Saverline 15m 3-Way Retracting Lifeline

This self retracting lifeline offers fall protection when entering or exiting confined spaces, and have the additional feature of an easy to deploy emergency winch function.

- 15 metre galvanised steel lifeline
- Strong, lightweight aluminium casing
- Swivel fall indicator hooks standard
- Weighs 8.9kg
- Maximum load 150kg.

Code: 5/3225



Recovery Winch

These robust personnel winches are perfectly suited to the demanding requirements of the confined space environment.

Tough, steel construction, combined with sensible features, allow operators to get on with the task at hand in total confidence.

Attention to detail, such as wire guide rollers and a spring loaded spool retention bar add to the workhorse nature of these winches.

- 20 metre units available
- Galvanised steel cable
- 20 metre unit weighs 11kg
- 20m maximum workload of 140kg.

Code: RW020



ACCESS AND RESCUE EQUIPMENT

Heavy Duty Tripod



This aluminium tripod has been designed for tough work conditions and long term use and is particularly suitable for the hire industry. Rectangular, fully adjustable legs and a one piece cast head are designed to resist damage. Integrated twin pulleys and an additional auxiliary anchorage point allow many options and combinations of access, egress and rescue equipment to be specified. Standard extended height is 2.7m.

Code: Tripod-HD

Heavy Duty Tripod

Working Load Limit	350kg
Weight	24kg
Standard Height	1.86m
Extended Height	2.7m
No. of Persons	2
Wheelbase (Footprint) Diameter	2.3m
Legs	Aluminium
Head Wheels	Stainless Steel
Hardware	Zinc Plated Steel
Head Finish	Black Powder Coated



Dual pulleys allow for simultaneous operation of a winch and 3 way self-retracting lifeline

Tripod Head
Robust aluminium alloy cast head with two integral pulleys for smooth winching/lowering operations.



Swivel Aluminium Eye Bolts

Tested to sustain a force of more than 15kN static force

ACCESS AND RESCUE EQUIPMENT

Spanhoist Kit II



Spanhoist

This personal access kit can be used by a worker to raise and lower themselves to a work location. The kit can also be used by a second person to remotely raise and lower the worker. This kit can be used with a range of anchorage options, such as davits, tripods and attachment slings. To increase worker comfort this kit should be used with the CLIMA tech harness, or a work seat.

Pulley features:

- One-way Friction Pulley for increased control when lowering,
- Locking Cam for security and rescue hauling,
- Lightweight Alloy construction.

Footloop

Handle ascender for remote control of the Spanhoist System.

- Securing lanyard and adjustable Foot Loop

CODE: SPAN-4-12.5







DO NOT TOUCH
EMERGENCY
SERVICE
USE ONLY

SpanSet Ltd.
Telford Way, Middlewich
Cheshire CW10 0HX, UK
Tel: +44 (0) 1606 737494
Fax +44 (0) 1606 737502
www.spanset.co.uk