

03

Height Safety
Lifting
Load Control
Safety Management



NEW!

MaXafe Heavy-Duty Lashing
**Ensuring heavy loads
arrive safely!**

SpanSet
Certified
Safety

MaXafe advantages

Extremely low elongation of less than 2 %



High-performance webbing fibres ensure an exceptionally low elongation of less than 2 % - comparable to wire ropes or chains. **The advantage:** Reduced slippage of heavy loads during emergency braking and concerning manoeuvres.

Improved ergonomics



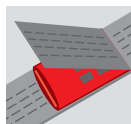
Thanks to the use of high-performance polyester, the MaXafe lashing system is comparable with conventional 75 mm systems although it only has a width of about 55 mm. **The advantage:** Weight savings of about 24 % compared to a 75 mm lashing system or similar lashing chain offers a significant reduction in workload. MaXafe is handy and quick to install.

Robust webbing construction



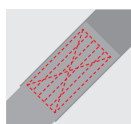
The webbing design of the MaXafe Heavy-Duty Lashing System is strengthened by the use of high-performance fibres. This results in reduced abrasion and damages of the webbing. **The advantage:** Longer service life and lower costs.

Quality label with foil sleeve

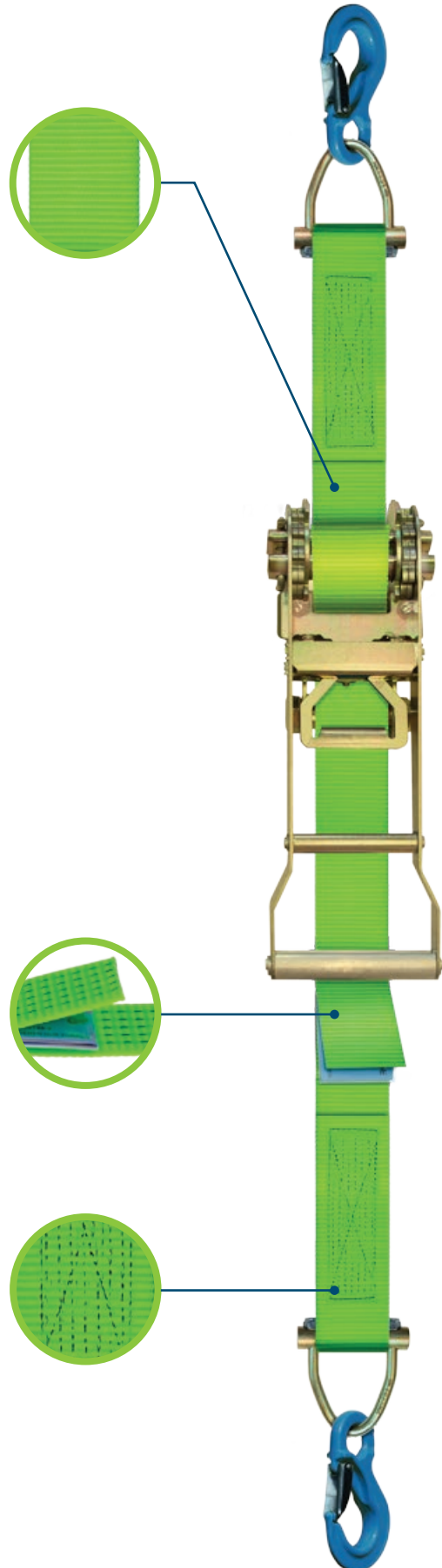


The MaXafe Heavy-Duty lashing's labels feature a strong and tear-proof design. A robust plastic sleeve perfectly protects the writing from abrasion and dirt. Overlapping webbing protects the label additionally. **The advantage:** Guaranteed long life.

Machined seam



The machined main seam is precise and of consistent quality. The black seam thread contrasts strongly with the neon green belt, which makes visual inspection much easier and faster. **The advantage:** Reduction of cost and effort.





MaXafe

MaXafe Heavy-Duty Lashing
**So that heavy load
arrives safely!**

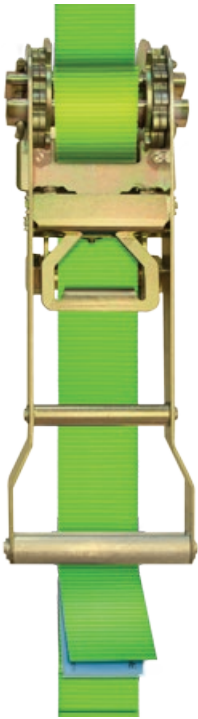


Design

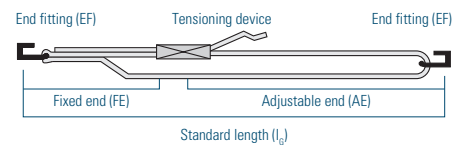
Ideal for diagonal lashing of heavy vehicles and machines

MaXafe is available in two versions:

The one-piece lashing belt designed according to the Carlash system principle is equipped with **B** ExoSet triangle hook (LS) and has a lashing capacity of 10,000 daN. The two-piece version, with either **A** snap hook (SFH) or **B** ExoSet triangle hook (LS) at both ends, has a lashing capacity of 5,000 daN. Both lashing systems are ideal for diagonal lashing.



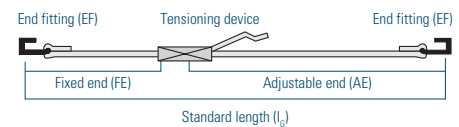
Carlash-System



Item No.	EF	Design	LC* [daN]	l _e [m]	Belt width [mm]	Belt thickness [mm]	Expansion [%]	ca. System weight [kg]
D076503	LS	carlash	10.000	3	55	3	< 2	10,3
D076504	LS	carlash	10.000	4	55	3	< 2	10,6

* Lashing Capacity

Two-piece



Item No.	EF	Design	LC* [daN]	l _e [m]	Belt width [mm]	Belt thickness [mm]	Expansion [%]	ca. System weight [kg]
D076498	2 x SFH	two piece	5.000	3	55	3	< 2	4,5
D076501	2 x LS	two piece	5.000	3	55	3	< 2	6,5
D076500	2 x SFH	two piece	5.000	4	55	3	< 2	4,7
D076502	2 x LS	two piece	5.000	4	55	3	< 2	6,7

* Lashing Capacity

A SFH – snap hook

B LS – ExoSet triangle hook



Applications

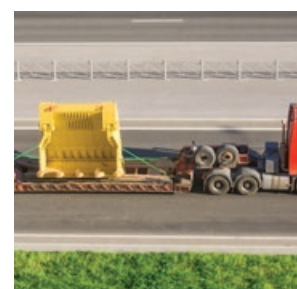
SpanSet MaXafe was specially developed for the transport of heavy machinery and vehicles.



Construction industries



Agricultural industries



Machine industries



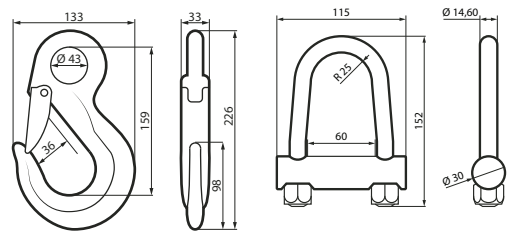
Material properties

Operating temperature :	- 40 to 100 °C
Belt material:	PES / high-performance fibre
Belt width:	55 mm
Belt thickness:	3 mm
Belt length:	variable
Belt colour:	neon green
Expansion:	< 2 %
Standard:	based on DIN EN 12195-2
Clamping element:	yellow-chromated
ExoSet triangle hook:	blue coated
Carabiner hook:	yellow-chromated

Dimensions of fasteners

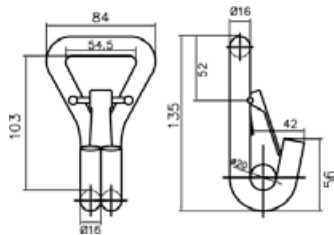
One piece (Carlash-System)

B LS – ExoSet triangle hook LC: 10.000 daN

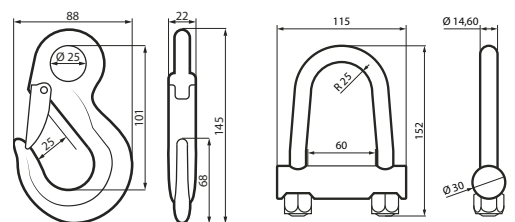


Two piece

A SFH – snap hook LC: 5.000 daN



B LS – ExoSet triangle hook LC: 5.000 daN



Optional accessories:

- Individual lengths
- Optional printed webbing
- PVC coating

Get in touch, we're happy to help!

