

SAFE LIFTING CHART

Synthetic and Chain Slings

02

Height Safety
Lifting
Load Control
Safety Management



Magnum X sling and Secutex Protective sleeve



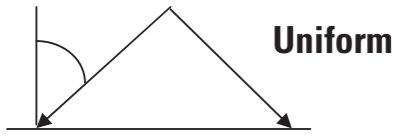
Power S.T.A.R. Duplex sling with 3 times greater wear resistance



The new generation of roundslings and hooks, SupraPlus roundslings and Joker hook



Magnum X roundsling 10t to 400t, Magnum roundsling 10t to 100t



Working Load Limits chart for Uniform loading on SpanSet Round and Webbing slings

Mode factor/ Marked WLL (KG)	Straight Lift		Choke Lift		Multi-leg 2 leg sling 0° to 45°		Multi-leg 2 leg sling 0° to 45° with ends choked		Multi-leg 2 leg sling 45° to 60°		Multi-leg 3 and 4 leg sling 0° to 45°		Multi-leg 3 and 4 leg sling 45° to 60°		Parallel basket up to 7°		Basket from 7° to 45°		Basket from 45° to 60°	
	Duplex or CS	RoundSling	Duplex or CS	RoundSling	Duplex or CS	RoundSling	Duplex or CS	RoundSling	Duplex or CS	RoundSling	Duplex or CS	RoundSling	Duplex or CS	RoundSling	Duplex or CS	RoundSling	Duplex or CS	RoundSling	Duplex or CS	RoundSling
	1.0		0.8		1.4	1.12	1.0	0.8	2.1	1.5	2.0	1.4	1.0							
500	-	500	-	400	-	560	-	400	-	-	-	1000	-	700	-	500				
1000	1000	1000	800	800	1400	1120	1000	800	2100	1500	2000	2000	1400	1400	1000	1000				
2000	2000	2000	1600	1600	2800	2240	2000	1600	4200	3000	4000	4000	2800	2800	2000	2000				
3000	3000	3000	2400	2400	4200	3360	3000	2400	6300	4500	6000	6000	4200	4200	3000	3000				
4000	4000	4000	3200	3200	5600	4480	4000	3200	8400	6000	8000	8000	5600	5600	4000	4000				
5000	5000	5000	4000	4000	7000	5600	5000	4000	10500	7500	10000	10000	7000	7000	5000	5000				
6000	6000	6000	4800	4800	8400	6720	6000	4800	12600	9000	12000	12000	8400	8400	6000	6000				
8000	8000	8000	6400	6400	11200	8960	8000	6400	16800	12000	16000	16000	11200	11200	8000	8000				
10000	10000	10000	8000	8000	14000	11200	10000	8000	21000	15000	20000	20000	14000	14000	10000	10000				
12000	12000	12000	9600	9600	16800	13440	12000	9600	25200	18000	24000	24000	16800	16800	12000	12000				
15000	15000	15000	12000	12000	21000	16800	15000	12000	31500	22500	30000	30000	21000	21000	15000	15000				
20000	20000	20000	16000	16000	28000	22400	20000	16000	42000	30000	40000	40000	28000	28000	20000	20000				
25000	-	25000	-	20000	35000	28000	25000	20000	52500	37500	50000	50000	35000	35000	25000	25000				
30000	-	30000	-	24000	42000	33600	30000	24000	63000	45000	60000	60000	42000	42000	30000	30000				

Larger capacity MAGNUM PLUS AND MAGNUM X ROUNDSLINGS AVAILABLE UP TO 400T

INSTRUCTIONS FOR THE CARE AND SAFE USE OF POLYESTER SLINGS (In accordance with EC Machinery Directive 206/42/EC and EN 1492-1 and -2.)

A. General Instructions

- Always work within the WLL of your slings. Increasing the angle between the sling legs reduces the lifting capacity. Always consult your SpanSet lifting chart.
- Never use damaged slings.
- Do not, under any circumstances tie knots in the sling - this will result in loss of strength and sling damage.
- Never mix the WLL of slings in one lift.
- When connecting two or more slings always use a Jokerhook.
- Never drag goods with the sling.
- Always position the sling in such a way as to ensure easy removal after use.
- Always use smooth, rounded hooks having an inside radius of not less than the sling width.
- Avoid placing more than one sling on the same hook.
- Keep slings away from acids and alkalis.

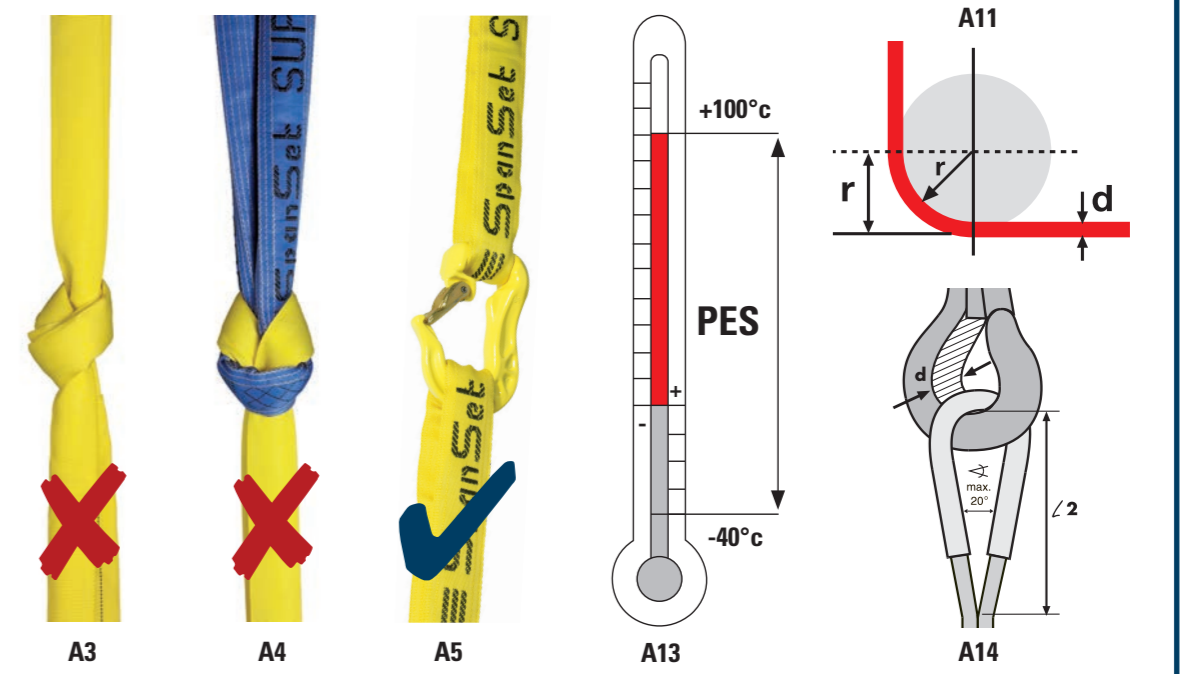
- Never use unprotected slings round sharp edges or corners, use SpanSet protective sleeves to protect your sling from abrasion or cutting.
- When lifting heavy cargo using more than one sling, remember that the total weight of the load may not be evenly distributed.
- Maximum working temperatures: -40° to 100°C. Please contact us if you are using slings at the extreme of these temperatures.
- Never allow the included angle of the web slings eye to exceed 20° or use a web sling that has an eye less than 3 times the hook bearing area.
- Never lay Web or Roundslings on top of one another or crush them during a lift.

B. Inspection and Maintenance

The following procedures should be adopted by a sling user:

- Remember - the user/responsible person should always examine the sling before taking into use. All equipment should be examined by a competent person at regular intervals.
 - Lay the sling on a flat surface in a well lit area.
 - Examine both sides of the sling for surface chafe and any cuts - either lateral or longitudinal - or along the edges:
 - Cuts on webbing slings, particularly at the sling edge, will result in serious loss of strength. A sling so affected should be taken out of service immediately. Endless slings must be examined over the whole length.
 - Roundsling cover damage - cuts in the cover should raise serious doubts as to the integrity of the core. A sling so affected should be taken out of service immediately and inspected by a competent person.
 - Where appropriate slings should be inspected for signs of chemical damage. This is indicated by local

- weakening or softening of the material in the webbing. Other indications may include fading and powdering of the webbing surface. Chemically damaged slings must be taken out of service.
- Examine the inside of the sling eyes, all stitching and fittings with particular care.
- Where any doubt exists as to the serviceability of a sling, SpanSet should be consulted.
- SpanSet slings may be cleaned if required by washing in cold water with a mild detergent.
- Avoid contact with hot surfaces and exposure to hot gases such as those from blowlamps or welding torches.
- Remember, do not take risks. If in doubt - contact SpanSet or an approved SpanSet distributor.



Chain Slings Grade 8, 10 and 12

Grade of chain	Straight Lift			Choke Lift			Multi-leg 2 leg sling 0° to 45°			Multi-leg 2 leg sling 0° to 45° with ends choked			Multi-leg 2 leg sling 45° to 60°			Multi-leg 2 leg sling 45° to 60° with ends choked			Multi-leg 3 and 4 leg sling 0° to 45°			Multi-leg 3 and 4 leg sling 45° to 60°			Endless Chain			Basket up to 45°			Double Basket up to 45°			
	GR8	GR10	GR12	GR8	GR10	GR12	GR8	GR10	GR12	GR8	GR10	GR12	GR8	GR10	GR12	GR8	GR10	GR12	GR8	GR10	GR12	GR8	GR10	GR12	GR8	GR10	GR12	GR8	GR10	GR12	GR8	GR10	GR12	
Mode factor/ Dia of chain	1			0.8			1.4			1.12			1			0.8			2.1			1.5			1.6			1.4			2.1			
4	-	660	-	-	528	-	-	924	-	-	660	-	-	660	-	-	528	-	-	1386	-	-	990	-	-	1056	-	-	924	-	-	1386		
6	1120	1400	1800	896	1120	1440	1568	1960	2520	1120	1400	1800	1120	1400	1800	896	1120	1440	2352	2940	3780	1680	2100	2700	1792	2240	2880	1568	1960	2520	2352	2940	3780	
7	1500	1900	-	1200	1520	-	2100	2660	-	1500	1900	-	1500	1900	-	1200	1520	-	3150	3990	-	2250	2850	-	2400	3040	-	2100	2660	-	3150	3990	-	
8	2000	2500	3000	1600	2000	2400	2800	3500	4200	2000	2500	3000	2000	2500	3000	1600	2000	2400	4200	5250	6300	3000	3750	4500	3200	4000	4800	2800	3500	4200	4200	5250	6300	
10	3150	4000	5000	2520	3200	4000	4410	5600	7000	3150	4000	5000	3150	4000	5000	2520	3200	4000	6615	8400	10500	4725	6000	7500	5040	6400	8000	4410	5600	7000	6615	8400	10500	
13	5300	6700	8000	4240	5360	6400	7420	9380	11200	5300	6700	8000	5300	6700	8000	4240	5360	6400	11130	14070	16800	7950	10050	12000	8480	10720	12800	7420	9380	11200	11130	14070	16800	
16	8000	10000	12500	6400	8000	10000	11200	14000	17500	8000	10000	12500	8000	10000	12500	6400	8000	10000	16800	21000	26250	12000	15000	18750	12800	16000	20000	11200	14000	17500	16800	21000	26250	
18	10000	-	-	8000	-	-	14000	-	-	10000	-	-	10000	-	-	8000	-	-	21000	-	-	15000	-	-	16000	-	-	14000	-	-	21000	-	-	
19	-	14000	-	-	11200	-	-	19600	-	-	14000	-	-	14000	-	-	11200	-	-	29400	-	-	21000	-	-	22400	-	-	19600	-	-	29400	-	-
20	12500	16000	-	10000	12800	-	17500	22400	-	12500	16000	-	12500	16000	-	10000	12800	-	26250	33600	-	18750	24000	-	20000	25600	-	17500	22400	-	26250	33600	-	-
22	15000	19000	-	12000	15200	-	21000	26600	-	15000	19000	-	15000	19000	-	12000	15200	-	31500	39900	-	22500	28500	-	24000	30400	-	21000	26600	-	31500	39900	-	-
26	21200	26500	-	16960	21200	-	29680	37100	-	21200	26500	-	21200	26500	-	16960	21200	-	4500	56650	-	31500	39750	-	33920	42400	-	29680	37100	-	4500	56650	-	-
32	31500	-	-	25200	-	-	44100	-	-	31500	-	-	31500	-	-	25200	-	-	67000	-	-	47500	-	-	50000	-	-	44100	-	-	67000	-	-	-

For further instruction on the care and safe use of chain slings please ask for the SpanSet Safe Lifting hand book.



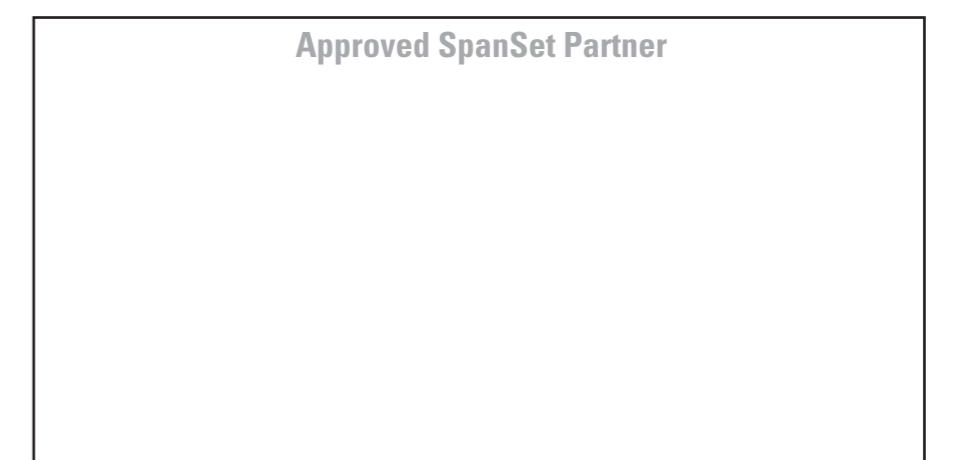
SpanSet Axzion Vario lifting beam and slings



Secumove protective sleeve to help safe lifting and rotating of sharp edged loads



IDXpert Net tagging available and all SpanSet slings and Lifting Points



Inspection points for webbing slings and roundslings

Visual check of lifting slings that can be repaired: Can be used after successful repair!



Label missing or no longer legible, but the manufacturer is known



The webbing cross-section is damaged by less than 10 %

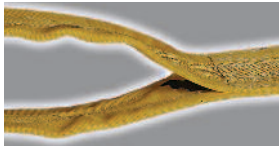


Only the sling eye reinforcement is damaged

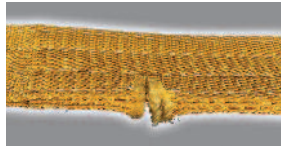
Note:

Lifting slings that can be repaired may only be re-used after their proper repair by the manufacturer or an authorised agent. Under no circumstances may they continue to be used unrepaired or repaired by third parties.

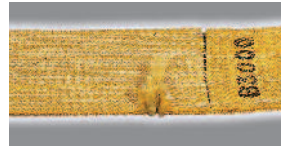
Visual check: Remove from service and destroy webslings



Manufacturer unknown



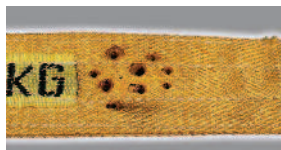
Damage to more than 10 % of the cross-section



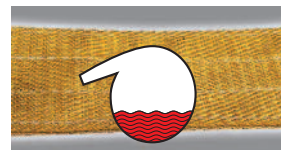
Main seam damaged



Damage to the slings (not the reinforcement)



Damaged by heat



Damaged by acids/alkalis

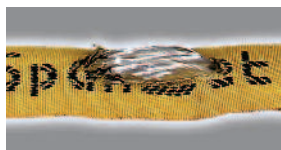
Note:

Lifting slings that are to be discarded, i.e. are irreparable, must be safely withdrawn from use! But don't take any risks! These lifting slings may not be used even with a reduced lifting capacity!

Visual check of roundslings that can be repaired: Can be used following approved repair and re-certification



Label missing or no longer legible, but the manufacturer is known



Only the sleeve or stitching is defective (the strands must be undamaged)

Note:

Roundslings that can be repaired may only be re-used after their proper repair by the manufacturer or an authorised agent. Under no circumstances may they continue to be used unrepaired or repaired by third parties.

Visual check: Remove from service and destroy roundslings.



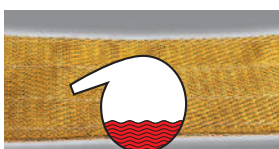
Manufacturer unknown



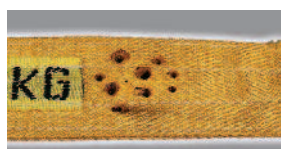
Damage to the internal strands

Note:

Roundslings that are to be discarded, i.e. are irreparable, must be safely withdrawn from use! But don't take any risks! These roundslings may not be used even with a reduced lifting capacity!



Damaged by acids/alkalis



Damaged by heat