

# **XTIRPA**

**INSTRUCTION AND SAFETY MANUAL  
XTIRPA™ 1524mm-2439mm (60" to 96") Extendable  
Fall Protection & Retrieval Davit Arm for PPE**

**UNIVERSAL RESCUE SYSTEM  
IN-8006**

**XTIRPA™**



**TO BE READ AND UNDERSTOOD BY USER PRIOR TO EACH USE**

**Innova**  
Produits de Services Publics - Public Utility Products inc.

INNOVA Public Utility Products Inc., 1129-1 ROBERVAL SUD, GRANBY, QUEBEC, CANADA  
Tel (450) 777-1240 Fax (450) 372-9936 [www.innova2000.ca](http://www.innova2000.ca)

**Number: MU8006-001A Rev. F2011**

# INTRODUCTION

## WARNING

The **XTIRPA™** System is part of a personal fall arrest, work positioning, personnel riding, material handling or rescue system for use in confined spaces. The user must read, understand and follow the Manufacturer's instructions for each component or part of the complete **XTIRPA™** System. These instructions must be provided to the user of the **XTIRPA™** System. The user must read and understand these instructions before using the **XTIRPA™** System. Manufacturer's instructions must be followed for proper use and maintenance of this product. Alterations or misuse of the **XTIRPA™** System or of any component or part thereof or failure to follow instructions may result in serious injury or death, for which the Manufacturer disclaims all warranties and liabilities whatsoever, user, owner and purchaser of the **XTIRPA™** System waiving all claims, rights and recourses against Manufacturer and derived there from.

The **XTIRPA™** System was conceived for persons needing a personal fall arrest, work positioning, personnel riding, material handling or rescue system for use in confined spaces. The **XTIRPA™** System is intended to act as a support structure or anchorage for these uses. Due to its conception and the use of an advanced composite, the **XTIRPA™** System is ergonomical to use and is one of the lightest systems of its kind on the market. The **XTIRPA™** System is in compliance with ANSI, OSHA, CE (in process of certification), and CSST standards.

Always keep this Instruction and safety manual available to any worker needing to use the **XTIRPA™** System.

Before each use, user must read, understand and follow Manufacturer's Instruction and safety manual.

Keep instructional and safety labels apposed on the **XTIRPA™** System and components and parts thereof clean and legible at all times. Clean or replace if required.

New labels can be obtained upon demand.

Establish a regular training program on the **XTIRPA™** System for new & experienced workers, as further recommended in this Inspection and safety manual. Establish a detailed inspection program for the **XTIRPA™** System and document findings, as further recommended in this Instruction and safety manual. Always inspect the **XTIRPA™** System before each use and at least once a month.

The **XTIRPA™** System and its components and parts have labels indicating the maximum capacity of each. Exceeding said maximum capacity may result not only in damages to the **XTIRPA™** System or components or parts thereof but also in serious injury or death, for which Manufacturer disclaims all warranties and liabilities whatsoever, user, owner and purchaser of the **XTIRPA™** System waiving all claims, rights and recourses against Manufacturer derived there from.

The **XTIRPA™** Universal Safety system, IN-8006 Including components IN-2199, mast for fall protection and retrieval and IN-2197, Extendable Davit arm for fall protection and retrieval conforms to document number MU8006-001A.Rev. F2011.

# DESCRIPTION & INTERPRETATION OF SYMBOLS OF MARKING



This symbol is used to signalized the user of a potential hazard. The safety of the worker is in jeopardy. It is imperative to follow manufactures recommendation.



This symbol asks the user to read and understand the manual for this product before use.

## -1-

### APPLICATION

The **XTIRPA™** System, and its many components and parts (including davit arm, manhole guard, detachable adapter, permanent adapter, integrated mast, trailer hitch mount and 5 piece hoist system), are intended to be used as part of a personal fall arrest, work positioning, personnel riding, material handling, or rescue system for use in confined spaces. The **XTIRPA™** System is intended to act as a support structure or anchorage for these uses.

## -2-

### RESTRICTIONS

- a) **CAPACITY** : The maximum working load for this product is 360 lbs(163 kg).
- b) The manufacturer attests that anchoring devices have been tested accordingly to the present European standard and, except otherwise stipulated, equipments are to be used by only one person using a shock absorber to conform to regulation EN 355.
- c) **PRECAUTIONS** : Take the necessary precautions to limit injuries to the user and risks of damaging the **XTIRPA™** System.
- d) Use of the **XTIRPA™** System in areas where environmental hazards exist may require additional precautions to limit the possibility of injury to the user or damage to the **XTIRPA™** System. Hazards may include, but are not limited to: high heat, fire, flame, smoke, fumes, caustic chemicals, corrosive environments, high voltage power lines, sudden changes of pressure, explosive or toxic gases or substances, water or risks of flooding, risks of wall, ceiling or floor collapsing, moving machinery and sharp edges.
- e) Install and secure all signaling and other precautionary and security measures, including but not limited to, for notifying users, by-standers and vehicle operators circulating near the **XTIRPA™** System of the presence of the **XTIRPA™** System and of workers, before starting work.
- f) Wear all appropriate certified and recommended security equipment such as, but not limited to, hard hat, protective eyewear, leather gloves, protective clothing, work boots, harness, flashlight and respiratory device if needed.

**WARNING:** Equipment shall not be used past their capacity, or in any other applications for which the equipment was not design for.

**WARNING:** A warning should specify that the equipment shall not be used by a person that has not been trained or is not competent to used the equipment safely.

g) Always work in teams of at least two (2) people (1) attendant and (1) confined space worker (the person attached to the lifeline cable or rope), which must be qualified and trained on the **XTIRPA™** System and who must have read and understood this Instruction and safety manual before using the **XTIRPA™** System. One person works in the confined space (person attached to the lifeline cable or rope) and the other (attendant) pays out the line and reels it in, keeps contact with the person inside and remains available in case of any emergency. The attendant makes sure, at all times, that the user who is tying his lifeline cable or rope to his harness is in the right position. The attendant also assures that the **XTIRPA™** System is well in place and that no load imbalance is possible.

h) Use only a certified full body harness and lifeline cables and ropes for any user of the **XTIRPA™** System, with appropriate specifications designed and recommended for use in specialized work conditions such as those for which the **XTIRPA™** System is intended to be used as per this Instruction and safety manual.

i) Plan your work program before starting. Have the required equipment, procedures and people, which must be qualified and trained on the **XTIRPA™** System and who must have read and understood this Instruction and safety manual before using the **XTIRPA™** System, available to do the job.

j) Keep all instructional and safety labels apposed on the **XTIRPA™** System and its components and parts clean and legible at all times. Clean or replace if required. New labels can be obtained upon demand.

k) Do not exceed 360lbs (163kg) when davit are is in use with mast and adapter.

l) Follow all applicable laws, regulations and standards for work in, entry in and exit from confined spaces.

m) A person who has not read this Instruction and safety manual, has not been trained in using the **XTIRPA™** System and does not understand all operation, safety, maintenance, servicing and storage instructions contained in this Instruction and safety manual and in any other recommendations provided by Manufacturer or its certified trainers is not qualified to operate the **XTIRPA™** System and does it at its sole risk, therefore waiving any and all claims, rights and recourses against Manufacturer and derived there from.

n) Make sure to conform to relative demands regarding anchoring devices. (As: floor adapter, mural adapter etc.) Or the chosen structure that will be used has an anchoring point. In particular minimal required resistance, equivalency and position.

o) A rescue plan shall be enforced in order to face all likely emergency that could occur while working.

**WARNING:** All modifications of the equipment or all additions to the equipment shall not be perform without the authorization of the manufacturer, and all repairs shall be done as indicated by the operating mode of the manufacturer.

**WARNING:** It is established and agreed that equipment (system) is reserve to the use of only one person.

## XTIRPA™ SYSTEM REQUIREMENTS

**IMPORTANT :** If you have questions on the use, care or suitability of the **XTIRPA™** System for your application, please contact the Manufacturer INNOVA Public Utility Products Inc.

**IMPORTANT :** Record the product identification information from the ID label in the maintenance and inspection log of this Instruction and safety manual.

**IMPORTANT:** Record purchasing date and also date of first use on the maintenance and inspection log sheet included in this safety instruction manual.

**IMPORTANT:** If a material/positioning winch is required, this option will be available to you, by using the second mounting bracket conceived for this application. Follow installation instruction of this present manual and repeat steps 4-5-6 on installation of material/positioning winch. If you have any questions concerning the use, maintenance or appropriate characteristics of the **XTIRPA™** for your application, please contact the manufacturer INNOVA Public Utility Products Inc.

- a) The **XTIRPA™** System is intended to be used as part of a personal fall arrest, work positioning, personnel riding, material handling, or rescue system for use in confined spaces and act as a support structure or anchorage. The **XTIRPA™** System must be used only with adapters, anchors, connectors, other components, parts or subsystems certified, approved and recommended by the Manufacturer.
- b) Substitutions or replacements made with non-approved adapters, anchors, connectors, other components, parts or subsystems may be incompatible, may jeopardize the safety and reliability of the complete **XTIRPA™** System and may result in serious injury or death, for which Manufacturer disclaims all warranties and liabilities whatsoever, user, owner and purchaser of the **XTIRPA™** System waiving all claims, rights and recourses against Manufacturer derived there from.
- c) Connectors (hooks, carabiners, D-rings) must be able to support a capacity of at least 5000lbf (22.2kN).
- d) Make sure the lifeline cable or rope is positioned directly over the work area. Use only certified lifeline cable or rope, in perfect working condition, with appropriate specifications, including maximum leverage capabilities, for the intended use of the **XTIRPA™** System.
- e) Owners must make sure that, before each use, all users of the **XTIRPA™** System have read, understood and follow Manufacturer's Instructions and safety manual.
- f) Owners must also make sure that all users have successfully been trained in using the **XTIRPA™** System, before allowing them to use the **XTIRPA™** System, and at least annually thereafter.
- g) A person who has not read the Instruction and safety manual, been trained in using the **XTIRPA™** System and does not understand all operation and safety instructions, is not qualified to operate the **XTIRPA™** System. An untrained user exposes himself and others to possible serious injury or death, for which Manufacturer disclaims all warranties and liabilities whatsoever, user, owner and purchaser of the **XTIRPA™** System waiving all claims, rights and recourses against Manufacturer derived there from.

h) Refer to and follow applicable ANSI, OSHA, CE (in process of certification), CSST or other standards and local regulations. Comply with all requirements of your local regulations for your applications.

i) See other important operation instruction and safety information hereafter contained in this Instruction and safety manual.

j) It is imperative to supply all information in sufficient quantity to assure that different equipment articles are compatible when assembled as system.

k) Always use a Manhole Guard if the adapter and mast option is in use in order to secure your working area to avoid any fall.

l) Life expectancy of the **XTIRPA™** System, and its components will be determined after the periodically and monthly verifications conclusions that will determined the use or discounted of the system in service.

**WARNING:** All person containing a medical condition susceptible of causing a hazard to the user while using in normal operation, shall abstain from using the system in case of emergency.

**WARNING:** It is essential for the safety of the user, if the product is resold to a destination outside the first country, that the reseller supplies the instruction manual, maintenance instruction log sheet for the periodically inspections and all relatives repairs instruction written in the country language of product utilization. It is also required to supply all specific additional information for the equipment.

**WARNING:** It is susceptible that a hazard occur while using multiple components which one of them could affect the safety function of the system which the safety function could be affected by another article which interferes with this one.

m) Make sure the lifeline cable or rope is positioned directly over the work area. Use only certified lifeline cable or rope, in perfect working condition, with appropriate specifications, including maximum leverage capabilities, for the intended use of the **XTIRPA™** System.

## MAINTENANCE, SERVICING, STORAGE

- a) Before each use, user must read and understand Manufacturer's Instruction and safety manual.
- b) Before each use, carefully inspect the **XTIRPA™** System and all components and parts thereof.
- c) ANSI, OSHA, CE (in process of certification), & CSST requires a regular inspection program for all confined space entry/retrieval equipment and to maintain documented results of these inspections. Use the maintenance and inspection log included in this Instruction and safety manual to document the results.
- d) Remove the **XTIRPA™** System from service if a problem, unsafe or defective condition is found during the inspection. Return to an authorized service center or Manufacturer for service.
- e) Replacement of components and parts and additional maintenance and servicing procedures must be completed by an authorized service center, approved by Manufacturer, or Manufacturer itself.
- f) Establish a monthly inspection which should be done by a competent person (person who is familiar, has been trained and has read and fully understands this Instruction and safety manual), other than the user.
- g) Periodically clean the exterior of the **XTIRPA™** system in use, using water and mild detergent. Clean labels as required.
- h) Store the **XTIRPA™** System in a clean and dry environment, out of direct sunlight. Avoid areas with chemical or toxic vapors, substances or environments. Do not immerse or leave in direct contact with water, as corrosion and rust may occur. Inspect the **XTIRPA™** System after any period of extended storage and at least once a month.
- i) All components and parts of the manhole guard, davit arm and mast should be carried out or stored in separate bags to facilitate manipulation.
- j) Life expectancy of the **XTIRPA™** System, and it's components will be determined after the periodically and monthly verifications conclusions that will determined the use or discounted of the system in service.

## WARRANTY

The **XTIRPA™** System offered by Manufacturer, INNOVA Public Utility Products Inc., is warranted against manufacturing defects in workmanship and materials for a period of two (2) years from the date of shipment, which warranty only covers the original purchaser of the **XTIRPA™** System. Manufacturer will promptly repair or replace all components or parts found to be defective, Manufacturer reserving the right to elect to have any alleged defective part returned to its plant for inspection before making a repair or replacement. Only components or parts found to be defective by Manufacturer, at its sole discretion and upon any inspection requested and performed by Manufacturer, will either be repaired or replaced by Manufacturer, at its sole choice.

All claims must be forwarded in writing to Manufacturer, immediately upon discovery by owner, and must be accompanied by a copy of the proof of purchase of the original purchaser. Manufacturer will issue a claim's number and give specific instructions to be followed as to claim's procedures and return of the defective part, if so requested by Manufacturer. Owner will collaborate with Manufacturer and its representatives to allow inspection of any alleged defective part. All shipping costs to return defective components and parts to Manufacturer's plant are payable by owner, the cost of reshipping replacement components or parts being covered by Manufacturer.

This warranty does not cover equipment damages resulting from any other cause than a manufacturing defect in workmanship or materials, including, without limitation, damages resulting from abuse, lack of maintenance, improper handling or storage, voluntary damages, vandalism, accidental damages or damages resulting from impact or collision, damage in transit, damages caused by fire, explosion, chemical, toxic or corrosive vapors, substances or environments, water, normal corrosion and rust, storms, hail, and other acts of God, war insurrection, acts of terrorism or other damage beyond the control of Manufacturer. This warranty applies only to the original purchaser and is the only one applicable to the **XTIRPA™** System, and is in lieu of all other warranties, expressed or implied. Without limiting the generality of the foregoing, Manufacturer will not be liable nor responsible for any other cost, damages or claims whatsoever, including for any special, incidental, indirect, or consequential damages whatsoever such as, but not limited to, damages for loss of profits or expected revenues, for business interruption, for personal injury, for failure to meet any duty including of good faith or of reasonable care, for negligence, and for any other pecuniary or other loss whatsoever, arising out of or in any way related to the use of or inability to use the **XTIRPA™** System, even in the event of the fault, tort (including negligence), strict liability, breach of contract or breach of warranty, even if Manufacturer has been advised of the possibility of such damages. Manufacturer hereby disclaims all other warranties and conditions, either express, implied or statutory, including, but not limited to, any implied warranties or conditions of merchantability, of fitness for a particular purpose or application, and of lack of negligence or lack of workmanlike effort.



# XTIRPA™ SYSTEM DESCRIPTION

## WARNING

The XTIRPA™ System is part of a personal fall arrest, work positioning, personnel riding, material handling or rescue system for use in confined spaces. The XTIRPA™ System is intended to act as a support structure or anchorage for these uses. The user must read, understand and follow Manufacturer's instructions for each component or part of the complete XTIRPA™ System. These instructions must be provided to the user of the XTIRPA™ System. The user must read and understand these instructions before using the XTIRPA™ System. Manufacturer's instructions must be followed for proper use and maintenance of the XTIRPA™ System. Alterations or misuse of the XTIRPA™ System or failure to follow instructions may result in serious injury or death, for which Manufacturer disclaims all warranties and liabilities whatsoever, user, owner and purchaser of the XTIRPA™ System waiving all claims, rights and recourses against Manufacturer and derived there from.

## DESCRIPTIONS

**1524mm-2439mm (60" to 96")EXTENDABLE FALL PROTECTION & RETRIEVAL DAVIT ARM: IN-2197**

(see illustration 1)

**MAST FOR FALL PROTECTION & RETREIVAL: IN-2199**

(see illustration 2)

**XTIRPA™ 1524mm-2439mm (60" to 96") EXTENDABLE FALL PROTECTION & RETRIEVAL DAVIT ARM SYSTEM FOR PPE: IN-8006**

(see illustration 3)

Illustration 1: IN-2197



Illustration 2: IN-2199

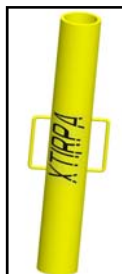
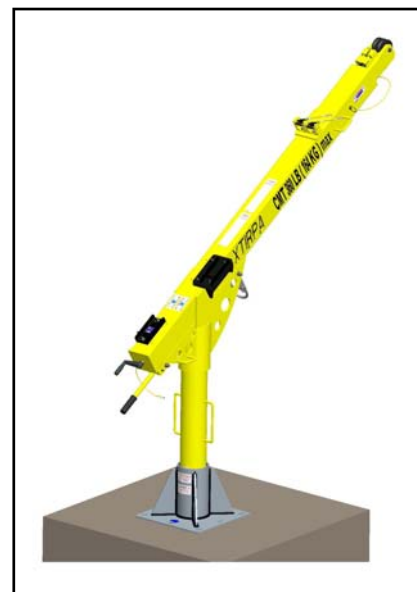


Illustration 3: IN-8006



-6-

# OPERATION, ASSEMBLY AND USE XTIRPA™ SYSTEM

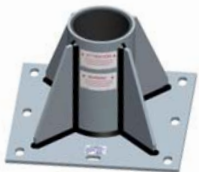
## OPERATING AND ASSEMBLY OF DAVIT ARM AND MAST SYSTEM



← EXTENDABLE FALL PROTECTION & RETRIEVAL DAVIT ARM  
IN-2197



← MAST FOR EXTENDABLE FALL PROTECTION & RETRIEVAL  
DAVIT ARM  
IN-2199



← CENTER MOUNTED FLOOR ADAPTER FOR MAST  
IN-2201

## OPERATION, ASSEMBLY AND USE XTIRPA™ SYSTEM

**WARNING:** The XTIRPA™ System is part of a personal fall arrest, work positioning, personnel riding, material handling or rescue system for use in confined spaces. The XTIRPA™ System is intended to act as a support structure or anchorage for these uses. The user must read, understand and follow Manufacturer's instructions for each component or part of the complete XTIRPA™ System. These instructions must be provided to the user of the XTIRPA™ System. The user must read and understand these instructions before using the XTIRPA™ System. Manufacturer's instructions must be followed for proper use and maintenance of the XTIRPA™ System. Alterations or misuse of the XTIRPA™ System or failure to follow instructions may result in serious injury or death, for which Manufacturer disclaims all warranties and liabilities whatsoever, user, owner and purchaser of the XTIRPA™ System waiving all claims, rights and recourses against Manufacturer and derived there from.

**IMPORTANT :** If you have questions on the use, care or suitability of the XTIRPA™ System for your application, please contact the Manufacturer INNOVA Public Utility Products Inc.

**IMPORTANT :** Record the product identification information from the ID label in the maintenance and inspection log of this Instruction and safety manual.

### OPERATION AND INSTALLATION OF DAVIT ARM AND MAST SYSTEM

1. Remove all components and parts from bags, boxes, or shipping container and set all on ground. Make sure that components are in good working condition.



2. Insert mast into a certified approved and recommended anchoring adapter.



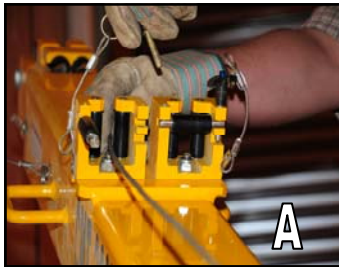
3. Install the receptacle of the davit arm on the mast.



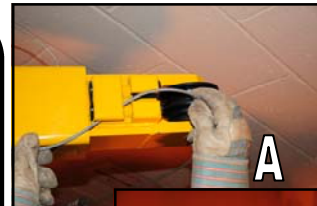
4. Install the lifeline cable or rope or winch on mounting bracket made to accept the hoisting device and safely lock with pin attached to the SRL or Winch bracket.



5. At mid section of the davit arm there is an alignment system. Remove the retaining pin (A), open horizontal roller door, pass the lifeline cable or rope into the alignment (B) and lock using retaining pin (C) Be assured that the lifeline cable or rope is safely in place



6. At the top of davit arm there are two sheaves side by side. Run cable or rope through the retaining mechanism (A) and set cable or rope in appropriate sheave. The cable or rope shall be set on the same side as the chosen alignment below (B).



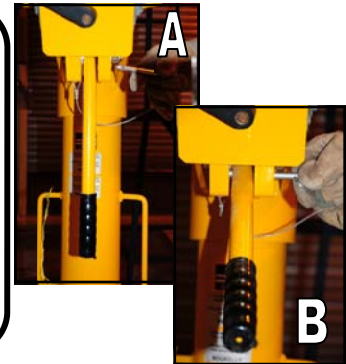
**IMPORTANT:** If a material/positioning winch is required, this option will be available to you, by using the second mounting bracket conceived for this application. Follow installation instruction of this present manual and repeat steps 4-5-6 on installation of material/positioning winch. If you have any questions concerning the use, maintenance or appropriate characteristics of the **XTIRPA™** for your application, please contact the manufacturer INNOVA Public Utility Products Inc.

**WARNING:** Only adaptors and brackets approved, certified and recommended by the Manufacturer are to be used with the **XTIRPA™** System.

7. Remove the retaining pin from its location at the center of the davit arm. Extend the inner mast of the davit arm using the rotating handle located at the bottom of the davit arm. (A) Extend davit arm to full length and lock with retaining pin (B).



8. In order to ease the rotational movement of the davit arm, remove the locking pin from its location (A). Lift the handle to horizontal position and lock with retaining pin (B).



**IMPORTANT:** If a material/positioning winch is required, this option will be available to you, by using the second mounting bracket conceived for this application. Follow installation instruction of this present manual and repeat steps 4-5-6 on installation of material/positioning winch. If you have any questions concerning the use, maintenance or appropriate characteristics of the **XTIRPA™** for your application, please contact the manufacturer INNOVA Public Utility Products Inc.

**WARNING:** Only adaptors and brackets approved, certified and recommended by the Manufacturer are to be used with the **XTIRPA™** System.

**IMPORTANT :** If you have questions on the use, care or suitability of the **XTIRPA™** System for your application, please contact the Manufacturer INNOVA Public Utility Products Inc.

**IMPORTANT :** Record the product identification information from the ID label in the maintenance and inspection log of this Instruction and safety manual.

**IMPORTANT:** Record purchasing date and also date of first use on the maintenance and inspection log sheet included in this safety instruction manual.

**WARNING:** Always use a Manhole Guard to secure your working area to avoid any fall if necessary.

**IMPORTANT:** Make sure the lifeline cable or rope is positioned directly over the work area. Use only certified lifeline cable or rope, in perfect working condition, with appropriate specifications, including maximum leverage capabilities, for the intended use of the **XTIRPA™** System.

**WARNING:** It is imperative to position the **XTIRPA™** System on a hard and level surface. **Do not use the XTIRPA™ System on soft ground, such as but not limited to, sand, grass, gravel and rocks.** If you have questions on the use, care or suitability of the **XTIRPA™** System for your application, please contact Manufacturer.

**WARNING:** System must be immediately remove from service: if the safety of the system is in doubt or the system has stopped a fall. It is imperative not to use the system until a competent person has authorized (in writing) reuse of the system.

**WARNING:** For all fall protection devices, it is essential, for safety purposes, that anchoring device is always positioned correctly and that the task to perform should be done in a manner to reduce risk of fall and height of fall. Anchoring point and fall protection device should be placed directly over the users position when essential.

**WARNING:** With the use of a fall protection device, it is essential for safety purposes, to verify the free space required under user on work site before each use to avoid and prevent fall, in case of collision with ground or any other obstacle that could be in the path of the fall.

**WARNING:** A fall protection harness is the only body prehension device allow to be use for fall protection.

**IMPORTANT :** If you have questions on the use, care or suitability of the **XTIRPA™** System for your application, please contact the Manufacturer INNOVA Public Utility Products Inc.



**WARNING:** Manufacturer's Instruction and safety manual must be followed for proper use and maintenance of this product. Alterations or misuse of this product or failure to follow instructions may result in serious injury or death, for which Manufacturer disclaims all warranties and liabilities whatsoever, user, owner and purchaser of the XTIRPA™ System waiving all claims, rights and recourses against Manufacturer derived there from.



Keep the following instructional and safety signs clean and legible at all times.

**XTIRPA**  
IN-2197  
Davit-Arm 96"

**Specifications :**  
Capacity: Maximum work load 360lbs (164kg) and a moment load of 34,560 lb-ft-in (3905 N-m)

**Materials:** Aluminum, Stainless Steel, Delrin™

**Standards :** Meets ANSI Z359 1-99, OSHA 1910.66, CSA Z259 2.1-98

**Inspection :**  
Before each use, inspect the XTIRPA™ System to determine that it is in perfect working condition. At least once a month, the portable manhole guard and other components of the XTIRPA™ system should be inspected by a competent person in accordance with the User's Instruction and safety manual.

Do not use if inspection reveals a problem, an unsafe or defective condition. Must not be repaired by other than manufacturer or an authorized service center. Not user repairable.

**Installation and use :**  
Ensure that all components and parts are in perfect working condition and working properly. Make sure that your anchoring point and mast are in perfect working condition. Install the davit-arm completely over the mast and ensure that it is free to rotate. Install the mounting plates on the davit-arm at the desired locations (depending on the winch models). Mount the winches with their supports on the mounting plates and lock with pins. Pass the winch cables through the roller and fixed guides and over the pulley that are on the same side of the winch. Adjust as needed the roller guide assembly to obtain a minimum winch cable deflection.

**It is very important that the winch cables are free to slide through the guides and that there is no pinch points.**

**Warnings :**  
For all other mast applications, consult Manufacturer or Distributor.

Manufacturer's instructions must be followed for proper use and maintenance of this product. Alterations or misuse of this product or failure to follow instructions may result in serious injury or death, for which Manufacturer and Distributor disclaim all warranties and liabilities whatsoever. User, owner and purchaser of the XTIRPA™ System waiving all claims, rights and recourses against Manufacturer and Distributor derived there from.

**Patents :**  
US 7,213,715 B2  
CA 2,479,513  
EP 03,744,296.9

Products Manufactured by:  
Innova Public Utility Products Inc.  
1129-1 Roberval Sud, Granby, QC, Canada  
J2J 0N3 www.xtirpa.com

S2197-002 Rev A Made in Canada

**XTIRPA**  
IN-2199  
Mast

**Specifications :**  
Capacity: Maximum work load 360lbs (164kg) and a moment load of 34,560 lb-ft-in (3905 N-m)

**Materials:** Aluminum

**Standards :** Meets ANSI Z359 1-99, OSHA 1910.66, CSA Z259 2.1-98

**Inspection :**  
Before each use, inspect the XTIRPA™ System to determine that it is in perfect working condition. At least once a month, the portable manhole guard and other components of the XTIRPA™ system should be inspected by a competent person in accordance with the User's Instruction and safety manual.

Do not use if inspection reveals a problem, an unsafe or defective condition. Must not be repaired by other than manufacturer or an authorized service center. Not user repairable.

**Installation and use :**  
Ensure that all components and parts are in perfect working condition and working properly. Make sure that your anchoring point is in perfect working condition and that it is free of debris, ice or any other object that might block the insertion of the mast. Insert the mast into the anchor point and verify that it is free to rotate freely.

**Warnings :**  
For all other mast applications, consult Manufacturer or Distributor.

Manufacturer's instructions must be followed for proper use and maintenance of this product. Alterations or misuse of this product or failure to follow instructions may result in serious injury or death, for which Manufacturer and Distributor disclaim all warranties and liabilities whatsoever. User, owner and purchaser of the XTIRPA™ System waiving all claims, rights and recourses against Manufacturer and Distributor derived there from.

**Patents :**  
US 7,213,715 B2  
CA 2,479,513  
EP 03,744,296.9

Products Manufactured by:  
Innova Public Utility Products Inc.  
1129-1 Roberval Sud, Granby, QC, Canada  
J2J 0N3 www.xtirpa.com

S2199-002 Rev A Made in Canada

**WARNING**

This product is man rated. It is only to be used in conjunction with personal fall arrest equipment that limits the maximum arresting force (MAF). The positioning pin must always be in place when product is in use (where applicable). Only equipment supplied or approved by the manufacturer shall be used with this product. Installation must be done by qualified and experienced personnel and follow hardware supplier recommendations as well as local and national standards.

**Max Working Load (WLL) = 360 lbs (164 kg)**  
**Max Moment Capacity = 8,640 lb-in (976 N-m)**

S2005-002 Rev A Made in Canada

**WARNING**

ALWAYS SECURE DAVIT-ARM EXTENSION WITH LOCKING PIN WHEN IN USE.

S2197-004 Rev A Made in Canada

**WARNING**



**Certified for (1) person only**

S2197-007 Rev A Made in Canada

SERIAL NUMBER STICKER

**XTIRPA**

Product No.	Lot No.
Serial No.	Mfg. date

www.innova2000.com

Manufactured by:  
Innova Public Utility  
Products Inc.

S2001-005 Rev A Made in Canada



