

# SpanSet®

## Magnum Force Lifting Solutions



## Magnum Force® High Performance Roundslings

- Up to 50% lighter than conventional round slings for even better manual handling
- Up to 50% slimmer than conventional round slings
- Can be laid against tighter edge radii than conventional PES slings
- Shackle and hardware interface is therefore less crowded
- Variable load bearing point for more even wear
- Ideal for choke lifting cylindrical objects without creasing
- Less creasing means less wear
- Lifts smooth objects without damage
- High strength to weight ratio
- Reinforced high performance woven cover
- Wide range of capacities from 10,000 to 600,000 lbs (and larger upon request)
- Available in lengths up to 98 ft
- Roundslings are repairable upon manufacturers inspection

## Magnum Force® High Performance Round Slings Lifting Capacities








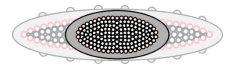
**Compact** The innovative construction with a high performance polyester fiber and a compact protective cover partially woven with the same material make the Magnum Force Roundslings up to 50% slimmer than comparable roundslings with the same load bearing capacity. At the same time, it produces greater stiffness within the sling along both axis. The roundslings are not bunched even in smaller crane hooks and attachment points and it is easy to suspend the sling overhead.

**Wear Resistant** Outer protective cover is reinforced with an extremely abrasion and tear resistant high performance polyester. In addition, the special design reduces the formation of bunching at the attachment point, which again significantly improves the wear behavior. Magnum Force Roundslings exhibit the greatest reliability and longest durability even under the harshest operating conditions – an economic factor you can count on.

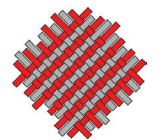
**Resilient** The new, high performance fiber has a significantly greater capacity. Consequently, less material is needed in the fabric, which makes the Magnum Force Roundslings up to 50% lighter than conventional roundslings. With the same load capacity, this high performance roundslings can be laid against tighter edge radii than conventional polyester slings. Work becomes more efficient, quicker and safer.

**Compliant** Magnum Force inner load bearing core is made from the same material as the outer sleeve. This is to ensure any chemical damage indications are consistent with both inner and outer materials. ASME B30.9-2014

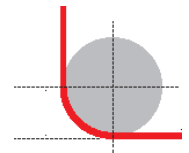
Part#	Vertical WLL (LBS)	Choker WLL (LBS)	90° Basket WLL (LBS)	60° Basket WLL (LBS)	45° Basket WLL (LBS)	Min Length (ft.)	Weight (per ft) Approx	Width at Load (in.) Approx	Min. Bow Diam. (in.)
									
<b>RCHPE20</b>	20,000	16,000	40,000	34,640	28,280	3	0.62	1.85	1.2
<b>RCHPE30</b>	30,000	24,000	60,000	51,960	42,420	3	0.87	2.20	1.4
<b>RCHPE40</b>	40,000	32,000	80,000	69,280	56,560	4	1.05	2.70	1.5
<b>RCHPE50</b>	50,000	40,000	100,000	86,600	70,700	4	1.28	2.80	1.8
<b>RCHPE60</b>	60,000	48,000	120,000	103,920	84,840	4	1.50	3.00	2.0
<b>RCHPE80</b>	80,000	64,000	160,000	138,560	113,120	8	1.96	3.70	2.2
<b>RCHPE100</b>	100,000	80,000	200,000	173,200	141,400	8	2.42	4.00	2.5
<b>RCHPE125</b>	125,000	100,000	250,000	216,500	176,750	8	3.17	5.10	3.0
<b>RCHPE150</b>	150,000	120,000	300,000	259,800	212,100	8	3.90	6.80	3.6
<b>RCHPE200</b>	200,000	160,000	400,000	346,400	282,800	10	5.19	8.10	4.8
<b>RCHPE250</b>	250,000	200,000	500,000	433,000	353,500	10	6.57	10.50	6.2
<b>RCHPE300</b>	300,000	240,000	600,000	519,600	424,200	10	7.64	12.30	7.3



Cross-section under load (WLL) by comparison



Compact outer cover with high performance polyester



Raised woven-in load capacity

**CALL US TODAY FOR PRICING! SpanSet, Inc. 3125 Industrial Drive Sanford, NC 27332 Phone: 800-334-7505**