

## SPECTRE 2 Harness

Height Safety  
Lifting  
Load Control  
Safety Management



### Product Name: SPECTRE 2

### Order Code: 2002261

#### What is it?

##### (Product Description):

SPECTRE 2 is a full body harness with front and rear attachments points. The full body harness is your link to the rest of your safety system. It must fit correctly to do its job.

#### What can it be used for?

##### (Intended Function):

This harness has been designed and tested to be part of a Fall Arrest System; this means that the harness can be used to catch you in the event of a fall. However it can also be used for as part of a Work Restraint System; this means that it can be used to limit your freedom of movement to prevent you falling.

#### What can I use with it? (Compatibility):

The SPECTRE 2 is compatible with the following equipment and their associated systems;

- SPECTRE energy absorbing lanyards
- Saverline Self-Retracting Lifelines
- Rope Restraint Lanyards
- Horizontal Safety Lines

If you are unsure of any equipment and its compatibility with the SPECTRE 2 harness please contact SpanSet Ltd.

#### Who can use it?

##### (Competence, Size and Adjustment):

Work at height can be a high risk activity. It is therefore essential that all users are competent in the pre use inspection, fitting / adjustment and use of this item. The SPECTRE 2 harness is designed so that if it fits the user then it is capable of supporting them correctly. The issue of user weight is therefore not a problem as long as the harness fits correctly.

Those who find the SPECTRE 2 harness too small should consider the ATLAS harness which is designed specifically for larger users. A correct fit is easily achieved with adjustment of the SPECTRE 2 harness at the legs, shoulders and chest.

#### How long will it last?

##### (Maintenance, Inspection and Lifespan):

SpanSet give this product a period of obsolescence of 10 years from date of manufacture, even if never used.

Products should be withdrawn from service if they meet any one of the following criteria:

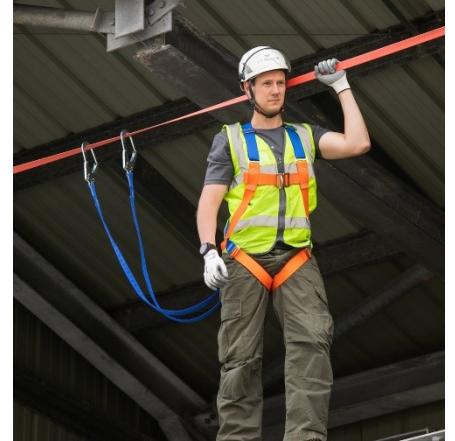
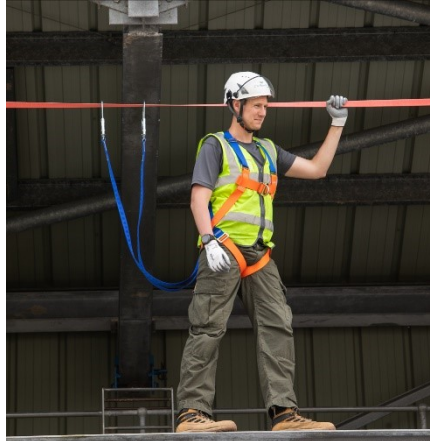
- 1) Failure of a thorough examination
- 2) Subjected to or Used to arrest a fall
- 3) Manufacturers period of obsolescence (shelf-life) has been reached

The condition of the product must be controlled in accordance with BS8437:2005, this requires regular inspections to be carried out by a competent person.

---

### SPECTRE 2 Harness

---



#### How has it been tested?

##### (Relevant Standard and Quality Assurance):

The SPECTRE 2 harness is CE marked under the EU PPE Regulations 2016/425.

The CE marking process includes independent testing to EN361:2002 – Personal protective equipment against falls from height—Full body Harnesses. The SpanSet manufacturing process is quality controlled and audited by the British Standards Institute to the international standard for quality management ISO9001:2008.

#### What is it made from and why?

##### (Specification and Materials):

45mm Polyester Harness Webbing:

- Wide and supple providing increased comfort for the wearer
- Highly Chemical and UV resistant providing increased lifespan

Mild Steel Buckles and Attachment Points

- High strength and durable

##### Additional SpanSet Features:

Individual Serial Numbering – All SpanSet Height safety products are individually serial numbered for traceability.

#### What paperwork is supplied?

##### (Product Records and Information):

Multilingual Instructions with pictorial fitting guide  
Individual Product History Card – This record card contains all the documentation required to maintain the product. The front forms the European Declaration of Conformity and the table on the reverse can be completed to form the inspection record.

Pocket Inspection Guide – This simple to follow pocket card identifies the key areas requiring inspection.

#### What training is required?

##### (Competency):

Although in itself this is a simple item to use, there are three stages that should be considered as part of the process as a whole. Training is available for all the stages outlined at the SpanSet training school in Middlewich or subject to suitability on a site of your choice:

**Risk Assessment and Planning** - Training Module 9 Management of Work At Height

**Safe Use** - Training Module 1 Height Safety Equipment Appreciation and Inspection followed by an appropriate practical module.

**Inspection and Maintenance** - Training Module 1 and Module 7 Competent Person Practical Inspection & Record Keeping.

All training for work at height is conducted in accordance with BS8454:2006 and is audited as part of our ISO9001:2008 quality management system.

For additional information on training please go to [www.spanset.co.uk](http://www.spanset.co.uk) or Email: [training@spanset.co.uk](mailto:training@spanset.co.uk)

#### What if I need to know more?

##### (Further Information):

If you have any specific questions that have not been answered you should contact the SpanSet customer services department. Tel: 01606737494 Email: [customerservices@spanset.co.uk](mailto:customerservices@spanset.co.uk)