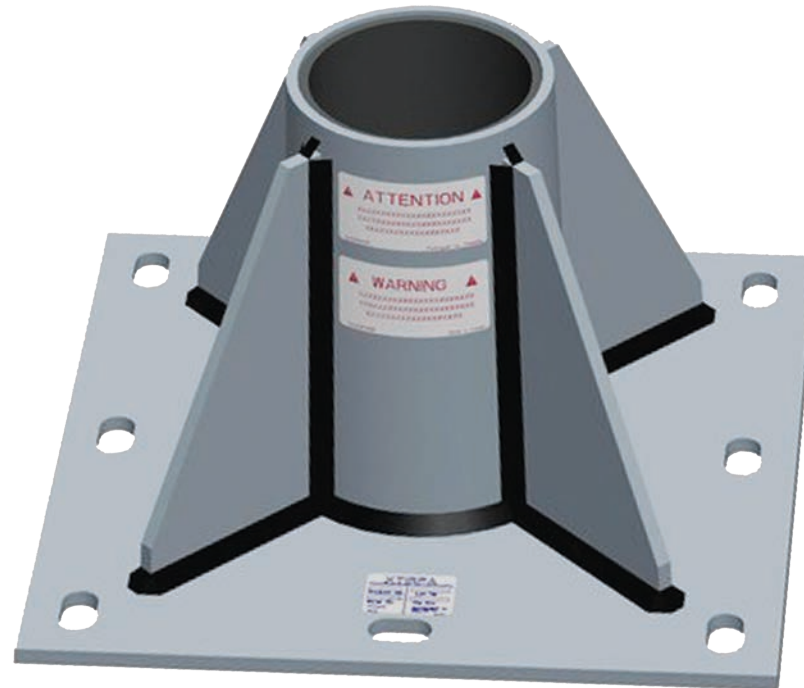


SPXTIN2201-01: Central Floor Adapter for Mast 5 1/2"



SpanSet Australia Ltd

13 Pullman Place
Emu Plains
NSW 2750
Australia

Telephone

+61 2 4735 3955

Fax

+61 2 4735 3630

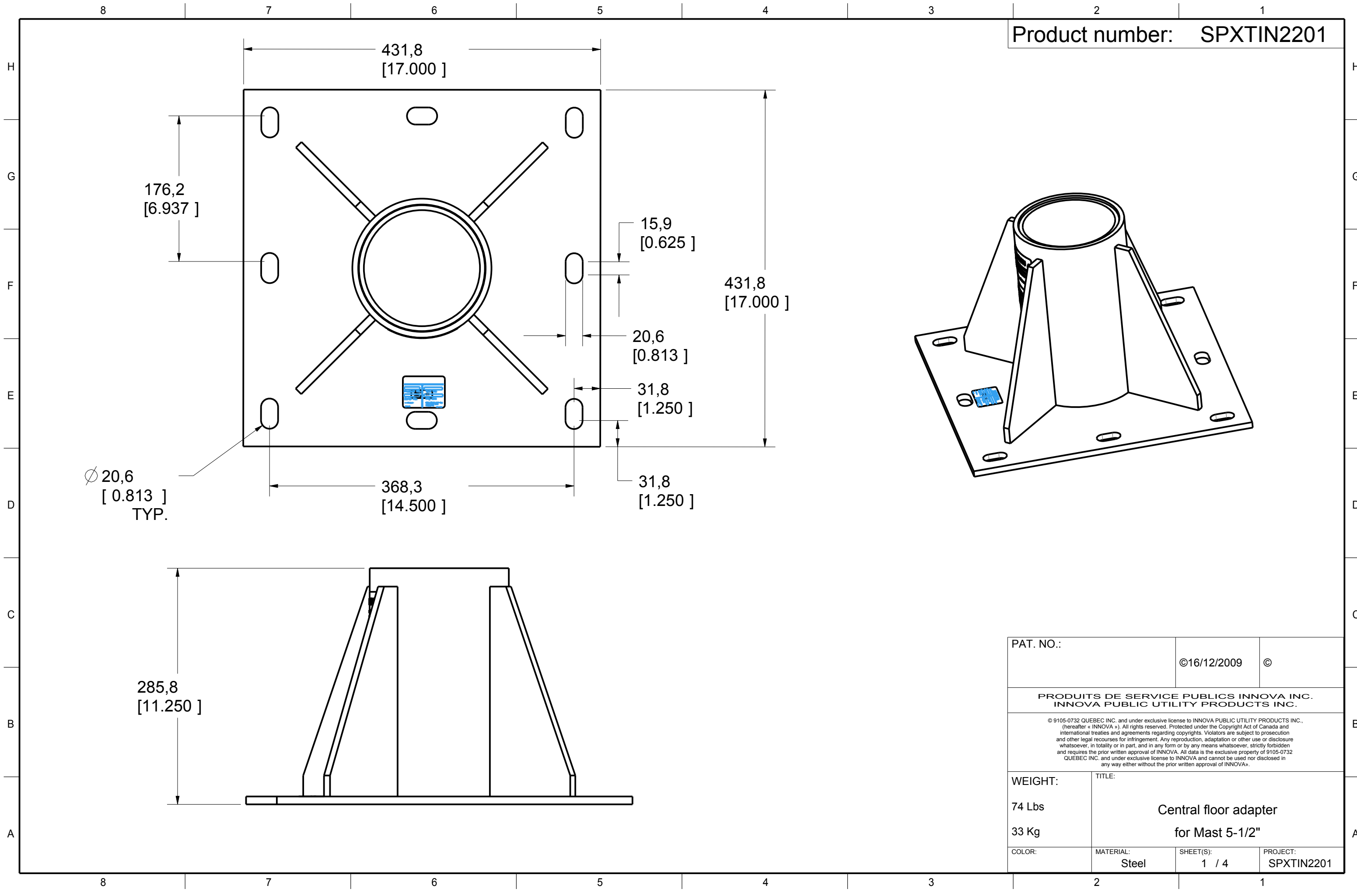
E-mail

sales@spanset.com.au

Internet

www.spanset.com.au

Product number: SPXTIN2201



PAT. NO.:		©16/12/2009	©
PRODUITS DE SERVICE PUBLICS INNOVA INC. INNOVA PUBLIC UTILITY PRODUCTS INC.			
<small>© 9105-0732 QUEBEC INC. and under exclusive license to INNOVA PUBLIC UTILITY PRODUCTS INC. (hereafter « INNOVA »). All rights reserved. Protected under the Copyright Act of Canada and international treaties and agreements regarding copyrights. Violators are subject to prosecution and other legal recourses for infringement. Any reproduction, adaptation or other use or disclosure whatsoever, in totality or in part, and in any form or by any means whatsoever, strictly forbidden and requires the prior written approval of INNOVA. All data is the exclusive property of 9105-0732 QUEBEC INC. and under exclusive license to INNOVA and cannot be used nor disclosed in any way either without the prior written approval of INNOVA.</small>			
WEIGHT:	TITLE:		
74 Lbs	Central floor adapter for Mast 5-1/2"		
33 Kg			
COLOR:	MATERIAL:	SHEET(S):	PROJECT:
	Steel	1 / 4	SPXTIN2201

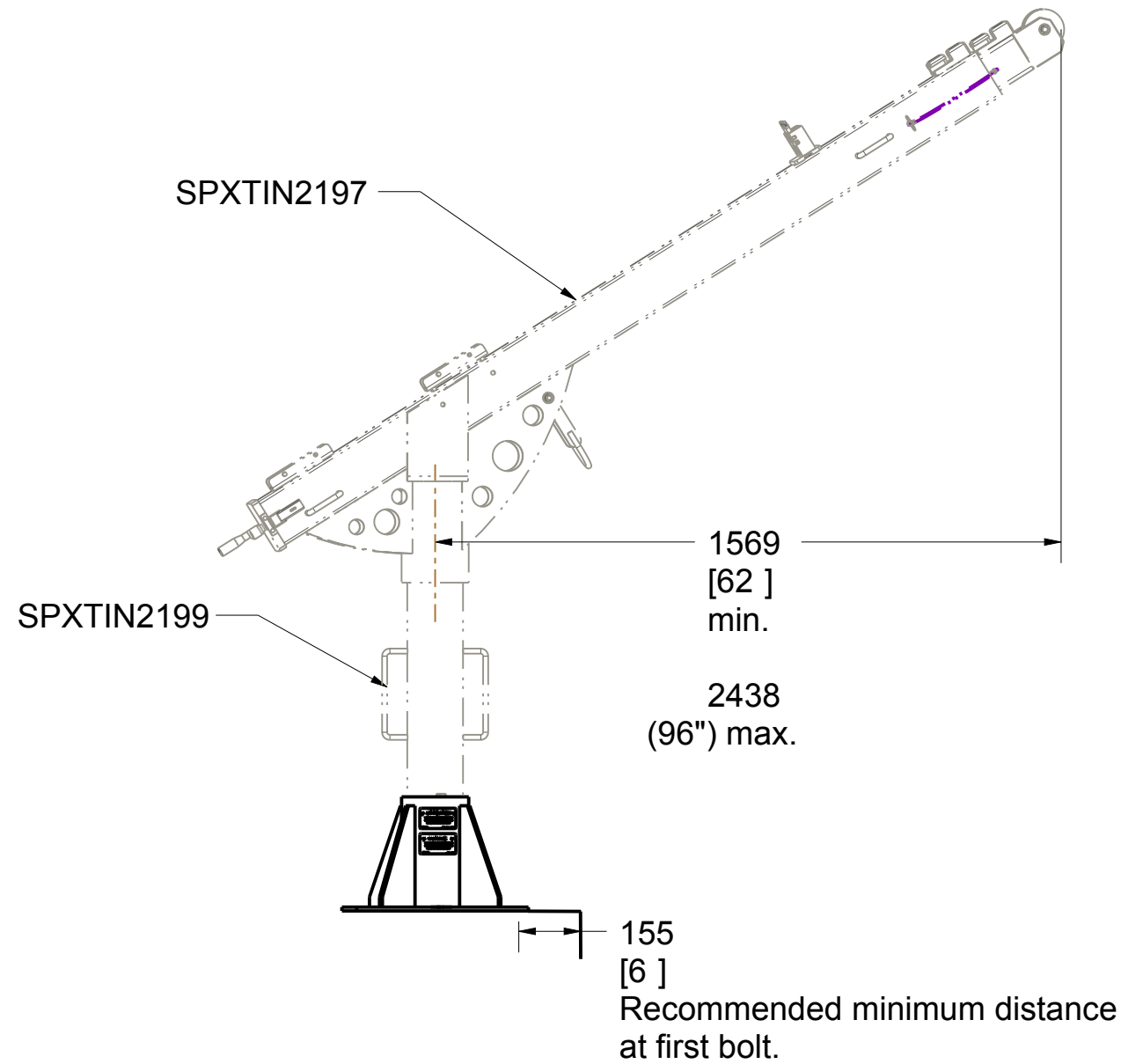
Recommandations:

Concrete must be made of 0,2% brut area reinforced 2000psi (13.8 MPa) or better.
Minimum thickness of 8" (203mm).

Moment capacity:
430,000 lbf-in (48,583 N-m)
Vertical load: 5,000 lbf (22,241 N).
N.B. It is the responsability of the field Engineer to assure installation compliance.

Hardware:

Anchor bolts: Chemical setting 3/4" x 6-5/8" effective holding length and made of 304/316 stainless steel.
Max pulling strength: 17,000 lbf (75,620N N)
To be installed with 3/4" stainless steel washers.



PAT. NO.:		©16/12/2009	©
PRODUITS DE SERVICE PUBLICS INNOVA INC. INNOVA PUBLIC UTILITY PRODUCTS INC.			
<small>© 9105-0732 QUEBEC INC. and under exclusive license to INNOVA PUBLIC UTILITY PRODUCTS INC., (hereafter « INNOVA »). All rights reserved. Protected under the Copyright Act of Canada and international treaties and agreements regarding copyrights. Violators are subject to prosecution and other legal recourses for infringement. Any reproduction, adaptation or other use or disclosure whatsoever, in totality or in part, and in any form or by any means whatsoever, strictly forbidden and requires the prior written approval of INNOVA. All data is the exclusive property of 9105-0732 QUEBEC INC. and under exclusive license to INNOVA and cannot be used nor disclosed in any way either without the prior written approval of INNOVA.</small>			
WEIGHT:	TITLE:		
74 Lbs	Central floor adapter		
33 Kg	for Mast 5-1/2"		
COLOR:	MATERIAL:	SHEET(S):	PROJECT:
	Steel	2 / 4	SPXTIN2201

Product number: SPXTIN2201

SPECIFICATIONS

This product is man rated with a maximum working capacity of 360lbs (164kg). It is only to be used in conjunction with personal fall arrest equipment that limits the maximum arrest force (MAF).

Maximum Working Moment : 3,905 N-m (34,560 lbf-in)
 Maximum Design Moment: 39,048 N-m (345,600 lbf-in)

STANDARDS

Meets the following standards:
 OSHA Personal fall arrest system - 1910.66 App C
 ANSI Safety requirements for personal fall arrest system, subsystems and components Z359.1 (R1999)
 CAN/CSA Fall arresters, vertical lifelines, and rails Z259.2.1-98

MATERIAL AND CONSTRUCTION

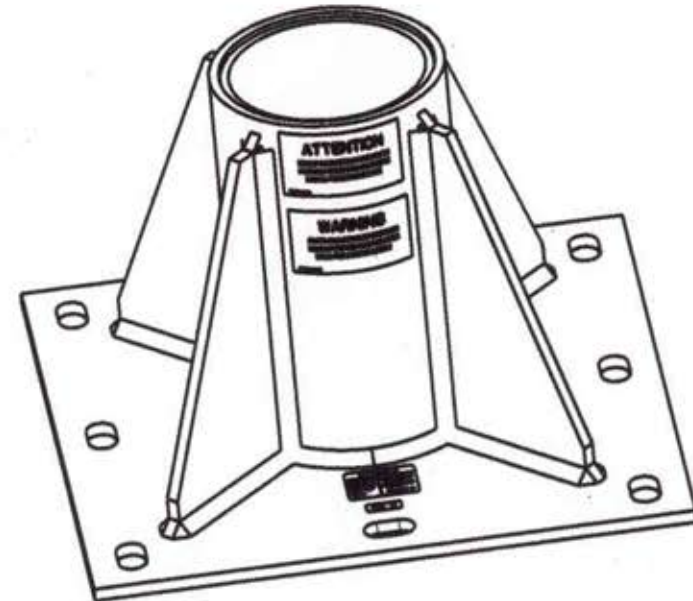
Plate, gussets and sleeve : 304 Stainless Steel
 Sleeve bearing : PVC Pipe.
 Welding Certification : CSA W59 & W47.1,
 AWS D1.6

RESTRICTIONS

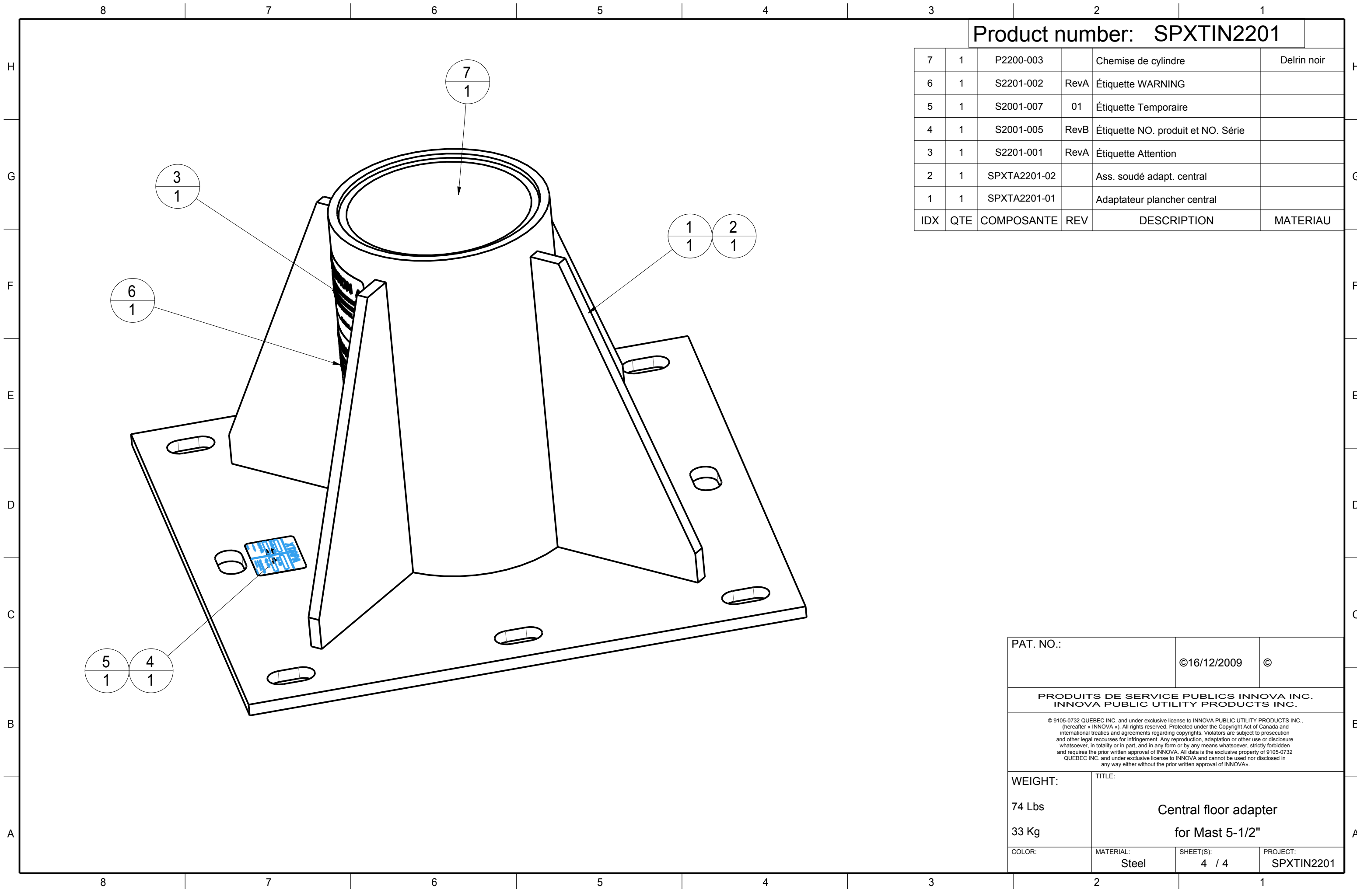
Adaptors are designed to function only with Innova public utility products INC. equipment.

IMPORTANT :

Anchorage hardware must be installed by qualified and experienced personnel. The installer must follow the anchorage hardware manufacturers recommendations at all time. Periodic inspections of hardware must be done. All equipment and hardware must be inspected before re-using by qualified personnel when a fall has occurred.



PAT. NO. :		016/12/2009 0	
PRODUITS DE SERVICE PUBLICS INNOVA INC. INNOVA PUBLIC UTILITY PRODUCTS INC.			
<small> © 2009-2010 INNOVA INC. and every exclusive license to INNOVA PUBLIC UTILITY PRODUCTS INC., Invention of INNOVA INC. All rights reserved. Protected under the Copyright Act of Canada and international treaties and agreements regarding copyrights. Violators are subject to prosecution and other legal recourse for infringement. Any reproduction, adaptation or other use of disclosure whatsoever, in whole or in part, and in any form or by any means whatsoever, strictly forbidden and reserves the prior written approval of INNOVA. All data is the exclusive property of INNOVA-2010 INNOVA INC. and every exclusive license to INNOVA and cannot be used nor disclosed in any way without the prior written approval of INNOVA. </small>			
WEIGHT:	TYTLE:		
0.000 Lbs	Central floor adapter		
0.000 Kg	for Mast 5-1/2"		
COLOR:	MATERIAL:	SHEET(S):	PROJECT:
	Steel	3 / 4	SPXTIN2201



Product number: **SPXTIN2201**

7	1	P2200-003		Chemise de cylindre	Delrin noir
6	1	S2201-002	RevA	Étiquette WARNING	
5	1	S2001-007	01	Étiquette Temporaire	
4	1	S2001-005	RevB	Étiquette NO. produit et NO. Série	
3	1	S2201-001	RevA	Étiquette Attention	
2	1	SPXTA2201-02		Ass. soudé adapt. central	
1	1	SPXTA2201-01		Adaptateur plancher central	
IDX	QTE	COMPOSANTE	REV	DESCRIPTION	MATERIAU

PAT. NO.:		©16/12/2009	©
PRODUITS DE SERVICE PUBLICS INNOVA INC. INNOVA PUBLIC UTILITY PRODUCTS INC.			
<small>© 9105-0732 QUEBEC INC. and under exclusive license to INNOVA PUBLIC UTILITY PRODUCTS INC., (hereafter « INNOVA »). All rights reserved. Protected under the Copyright Act of Canada and international treaties and agreements regarding copyrights. Violators are subject to prosecution and other legal recourses for infringement. Any reproduction, adaptation or other use or disclosure whatsoever, in totality or in part, and in any form or by any means whatsoever, strictly forbidden and requires the prior written approval of INNOVA. All data is the exclusive property of 9105-0732 QUEBEC INC. and under exclusive license to INNOVA and cannot be used nor disclosed in any way either without the prior written approval of INNOVA.</small>			
WEIGHT:	TITLE:		
74 Lbs	Central floor adapter		
33 Kg	for Mast 5-1/2"		
COLOR:	MATERIAL:	SHEET(S):	PROJECT:
	Steel	4 / 4	SPXTIN2201